

DESCRIPTION OF PRODUCT: Anterior Posture Support, for use with desk arm wheelchair, and other similar, non-wheelchair applications

CAUTION: FEDERAL LAW (USA) RESTRICTS THIS DEVICE TO SALE OR USE BY OR ON ORDER OF A PHYSICIAN.

INDICATIONS:

If the patient/resident is not able to easily self-release this product, it would be considered a restraint and therefore must be prescribed by a physician.

- Patients needing a work area or eating area on their wheelchair.
- Patients with poor upper torso alignment who need a firm surface to rest their elbows on.

CONTRAINDICATIONS:

Contraindications include, but are not limited to the following conditions:

- Aggressive, combative, agitated, or suicidal patients.
- Discontinue use immediately if the patient is able to slide forward or down underneath the device. They could slide far enough under the device to become suspended, resulting in chest compression and suffocation. Posey products with a pelvic piece are designed to help prevent sliding. Products without a pelvic piece between the legs will not hinder sliding as effectively. See your Posey catalog for other more suitable products to help prevent sliding.
- This is not a restrictive product, and may be easily self-released by the patient. Patients who cannot safely ambulate without assistance, or those at risk for a fall or re-injury should not use this product.

ADDITIONAL SAFETY INSTRUCTIONS ON OTHER SIDE

ADVERSE REACTIONS:

Severe emotional, psychological, and physical problems may occur if a patient's movement is severely limited. The patient may become agitated if the device is uncomfortable or severely limits movement. Request assistance from a qualified medical authority to try to find a less restrictive alternative product or intervention.



The Hugger should always be comfortable, and not interfere with breathing. You should be able to slide your open hand (flat) between the device and the patient.



After applying this product, always monitor appropriately per facility policy to make sure the patient/resident is not able to slide down, under the cushion, and fall off the chair seat. If their body weight becomes suspended off the chair, chest compression and suffocation could result. A lap belt to hinder sliding, or a restraint with a pelvic piece may be necessary to prevent sliding.

CLEANING INSTRUCTIONS:

Wipe vinyl cover clean with soap and water, or disinfectant.



APPLICATION INSTRUCTIONS:

1. Position the patient/resident in the wheelchair or chair.
2. Hold the Hugger horizontally with the zippered edge facing you and the notches facing laterally.
3. Compress each side of the Hugger, squeezing it under each armrest until the Hugger lies flat.
4. Be sure the front bar of the armrest is firmly nested inside the notch of the Hugger on either side, as shown in photo.

NOTE: The patient/resident should always be comfortable and the Hugger should not interfere with breathing. You should be able to slide your open hand (flat) between the device and the patient/resident.

POSEY LAP HUGGER PRODUCT OFFERING

| Cat. # | Arm Style | Fits Wheelchair | Thickness | Color |
|-------------------|-----------|-----------------|-----------|---------------|
| 6517T16 | Desk | 16" | 2" | Blue |
| 6517T18 | Desk | 18" | 2" | Blue |
| 6517 | Desk | 18" | 3" | Blue |
| 6515T | Full | 16-20" | 2" | Blue |
| 6515N | Full | 16-20" | 3" | Blue |
| 6515 | Full | 16-20" | 4" | Blue |
| 6506 | Full | 16-18" | 4" | Blue w/Window |
| 6515M | Full | 16-20" | 4" | Mauve |
| 6515SL | Full | 20-24" | 3" | Blue |
| 6515L | Full | 20-24" | 4" | Blue |
| 6514 Self Release | All | 18-20" | 4" | Blue |
| 6542 EZ Release | All | 18-20" | 4" | Blue |



WARNING: Monitor patients appropriately per your facility's policy!

Inappropriate and/or incorrect usage of any restrictive product may result in serious injury or death. The Posey Company recommends the following steps before any restrictive product is used:

- Identify the patient's symptoms.
- Determine and remove, if possible, the cause of the symptoms. This may include catering to individual needs and customary routines, increased rehabilitation and restorative nursing, modifying the environment and increased supervision.
- If the cause cannot be determined and removed, attempt alternative treatments under proper medical supervision.
- A restraint should be used only when practicable alternatives have failed. The least restrictive device that will protect the patient and others should be selected and used for the shortest time while less restrictive alternatives are sought. It is critical that the appropriate restraint is selected and sized properly (See sizing table).
- Follow the directions on the Application Sheet accompanying each product.



#1 Posey restraints are labeled: **Caution: Federal law (USA)**

restricts this device to sale by or on order of a physician. All staff should receive proper inservice training so products are applied in accordance with the manufacturer's instructions, state and federal regulations and the facility's policies and procedures. Posters, Videos and Inservice materials are available free from the Posey Company.



#2 Restrictive products should only be used within the carefully defined and documented

parameters of the patient's Individualized Care Plan (ICP), which addresses (but is not limited to) restorative nursing, patient release, and pressure sore prevention. The ICP is created after an assessment by an interdisciplinary team which may represent (but is not limited to) PT, OT, Nursing, the Physician, and Social Services.



#3 NEVER use a Posey product as a seat belt in a moving vehicle.

Posey products are not designed to withstand the force of a crash.



#4 DO NOT expose any Posey Product to open fire, flame, or contact with smoking materials.

Components such as fabric, webbing, thread, etc. are susceptible to ignition and burning. The facility's smoking/no smoking policy should be vigorously enforced. Flame retardant fabric is available on request.

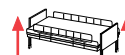


#5 Never crisscross the straps of a Posey Vest/Jacket in back of the patient unless there is

a positioning slot in the rear of the product. Any restraint applied incorrectly and/or worn backwards may cause strangulation or injury.

#6 Secure straps of restrictive products out of the patient's reach at a juncture

of the movable part of the bed frame at waist level so the device will not tighten or loosen when any section of the bed is raised or lowered. Make sure the strap will not slide in any direction, changing position of the device.



#7 After applying a restraint or self-release product; always put all

side rails in the UP position. Side rail covers and gap protectors, especially with split side rails, may be required to keep the patient on top of the mattress, and avoid entrapment zones. Use HBSW compliant side rails.



If the patient's body weight becomes suspended off the mattress by going under, around, over, through or between the side rails, chest compression and



suffocation could result. Restraints with pelvic pieces may be necessary to reduce sliding down or pulling the restraint over their head.



#8 Hips should be held securely against the back of the chair whenever any type of restrictive product is used. The straps should

be at 45 degrees over the hips and secured under the seat out of the patient's reach. Make sure straps are secured at a juncture of the frame and will not slide in any direction, changing position of the device. Use extreme caution with all cushions. If dislodged, patient injury could occur (see #9).



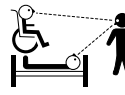
#9 Monitor to make sure the patient is not able to slide down, or fall off the chair seat. If their body weight becomes suspended

off the chair seat, chest compression and suffocation could result. Restraints with

pelvic pieces may be necessary to reduce sliding down or pulling the restraint over their head.

#10 Straps must always be snug, but not interfere with breathing. You should be able to slide your open hand (flat) between the device and the patient. Make sure straps do not slide in any direction, changing position of device.

#11 Always use quick-releasing ties that do not slip or loosen (see drawings), or buckles to secure straps - they allow easy release in the event of accident or fire. Test to make sure knots do not slip or loosen. If knots slip or loosen, patient may slide off chair or bed, possibly resulting in patient injury or suffocation. Restraint release should be an integral part of the facility's fire/disaster evacuation drills. Straps can be cut with scissors in an emergency.



#12 Patients in restrictive products require appropriate monitoring per your facility's policy.

Aggressive, agitated, restless patients and/or those in danger of aspirating their vomit require constant monitoring and a systematic review and evaluation of both physical and psychological status.



#13 Inspect before use for broken stitches or parts; torn, cut or frayed straps or fabric; or hook and loop fastener or locks that

do not hold securely. These products could fail, resulting in injury or death. Destroy and discard them. Straps must be long enough to secure out of the patient's reach. DO NOT alter products.



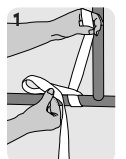
#14 Do not use Posey products on toilets, or on any type of furniture which does not allow application as directed in the product application sheet. Posey

limb and torso restraints should NOT be used at home.

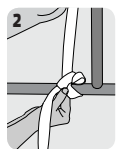
Just as patient behavior is not 100% predictable, no product is 100% foolproof under all circumstances. Patient safety requires regular reassessment and appropriate monitoring per your facility's policy. A product that worked successfully in the past may prove inappropriate as the patient's mental and physical health status changes. Never apply any product you feel is unsafe and consult with the proper medical authority if you feel a product is inappropriate for the patient.

How to Tie the Posey Quick Release Tie

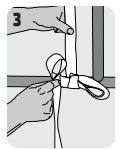
1. Wrap the attachment strap once around the movable part of the bed frame leaving at least an 8" tail. Fold the loose end in half to create a loop and cross it over the other end. Make sure straps are secured at a juncture of the frame and will not slide in any direction, changing position of device.



2. Insert the folded strap where the straps cross over each other, as if tying a shoe or making a tourniquet knot. Pull on the loop to tighten.



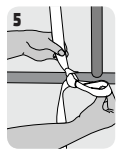
3. Fold the loose end in half to create a second loop.



4. Insert the second loop into the first loop.



5. Pull on the loop to tighten.



Sizing Table for Posey Products

Always use the proper size product. Products that are too small or large compromise patient comfort and safety and should not be used.

| BINDING COLOR | SIZE | WEIGHT (lb./kg) | CHEST (in./cm) |
|---------------|------------|-----------------|----------------|
| White | X-Small | 60-90/27-41 | 28-34/71-86 |
| Red | Small | 80-120/36-54 | 32-39/81-99 |
| Green | Medium | 110-155/50-70 | 37-45/94-114 |
| Yellow | Large | 145-190/66-86 | 43-49/109-124 |
| Blue | X-Large | 180-230/82-104 | 47-52/119-132 |
| Black | XX-Large | 220-275/110-125 | 50-56/127-142 |
| Yel/Blk | XXX-Large | 265-305/120-139 | 54-60/137-152 |
| Blu/Blk | XXXX-Large | 295-340/134-155 | 58-64/147-163 |

Posey Belts are not color-coded, but are sized according to this table.

Flame-retardant fabric is available on request.

Weight and size measurements give a general indication of the proper size. Individual physical characteristics should be taken into account before the medical authority determines the correct size. Refer to label on product for specific sizing indications.