



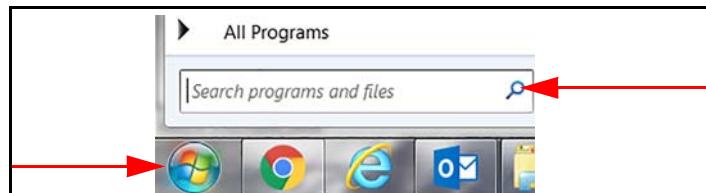
# Bluetooth® Setup Instructions

Many of the Rice Lake Medical Scales now have Bluetooth capability. Use the following instructions for the Bluetooth setup on these scales. Bluetooth technology is a wireless technology for connecting health and fitness devices because it's simple, secure and everywhere. Bluetooth allows the transfer of data from the scale wirelessly to Bluetooth-enabled devices such as cell phones, tablets, PDA or PCs.

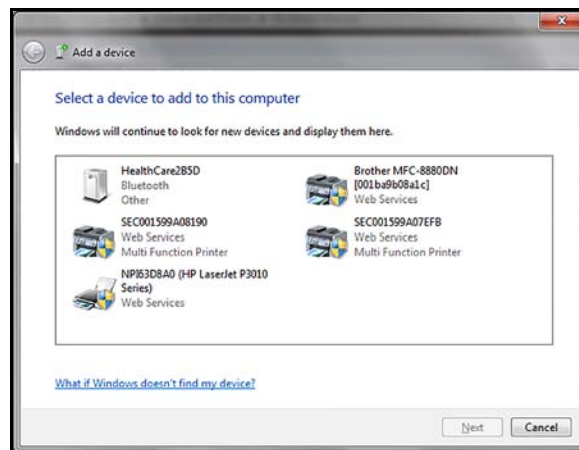
 **Important** Due to the vast number of Bluetooth devices on the market and the large number of software packages available, there are many ways to pair and connect to the scale.

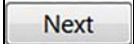
The steps used to pair the scale will vary, depending on the device/software being used. The scale is set up to be discoverable at all times.

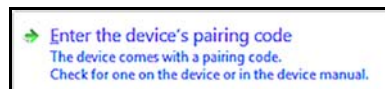
1. Power on the indicator.
2. Ensure the Bluetooth device is on. The flag icon display on the indicator.
3. Press . The programs menu displays.
4. Type *add* into the search bar at the bottom.

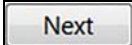


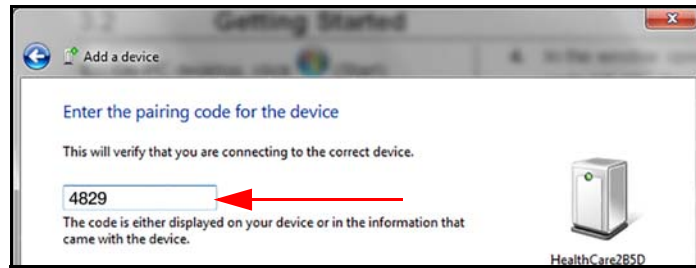
5. Under *Control Panel* select  **Add a Bluetooth device**. The *Add a Device* window opens.


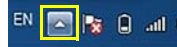



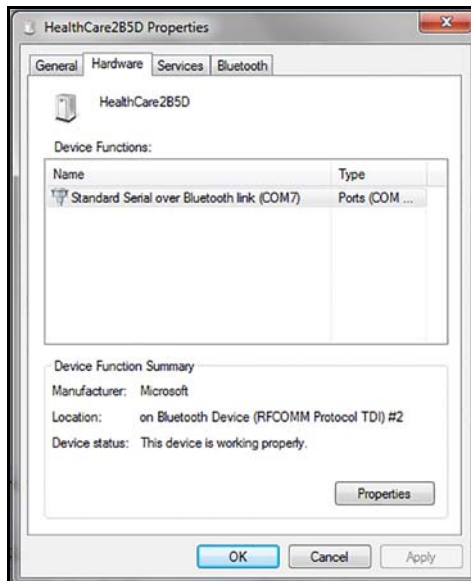
6. Select a Bluetooth device and press .
7. Select *Enter the device's pairing code*.



8. Enter the device's pairing code (4829) in the text box. **Check black circle displays** next to the selected device.
9. Press . *This device has been successfully added to this computer* displays.



10. Press .
11. Press the Show Hidden Icons arrow at the right side of the Task bar. 
12. Press  to open.
13. In the Properties window, right-click on the device icon and select *Properties*.
14. Select the Hardware tab to check the correct Comm and then click *OK* to confirm that.



15. Choose any communication terminal in order to send commands through the Bluetooth communication. Once pairing is successfully completed, a bond will be formed between the two devices, enabling those two devices to connect to each other.



© Rice Lake Weighing Systems Specifications subject to change without notice.  
Rice Lake Weighing Systems is an ISO 9001 registered company.