

seca 656

High capacity digital
stretcher scale with
wireless transmission

EMR integrated



- Network-capable with seca 360° wireless technology.
- Spacious platform for all common stretchers.
- Two integrated fold-away ramps included.
- Mobile thanks to the to castors and integrated handles.
- Innovative memory function for determining precise weight of patient.

seca 656:

Precision weighing in all situations.

Emergency admission into a hospital – everything must happen very quickly, especially when an operation is necessary and the patient’s weight needs to be determined in order to ensure the correct dose of anaesthetic. Weighing patients on stretchers or gurneys in this or in less dramatic situations is no problem with the seca 656: the platform is large enough for most common gurneys or stretchers on undercarriages. And, of course, patients can also be weighed comfortably on a chair or in a wheelchair with this platform scale. The seca 656 is thus suitable for use in the dialysis sector, long term care and in nursing homes.



Stable construction with very high capacity.

Thanks to its extremely stable construction and very high capacity of 800 lbs / 360 kg, even heavyweight patients can be weighed easily with the platform scale 656. The platform is generously sized to cope with wheelchairs and most common stretchers on undercarriages.

Cable remote display with many additional functions.

A cable remote display with easy-to-read LCD figures is included in delivery. This display is operated intuitively and is equipped with many additional functions. With the pre-TARE function, the extra weight of a stretcher or wheelchair can be deducted directly from the total weight during the weighing process. With the BMI function, the nutritional condition of the patient can be determined.

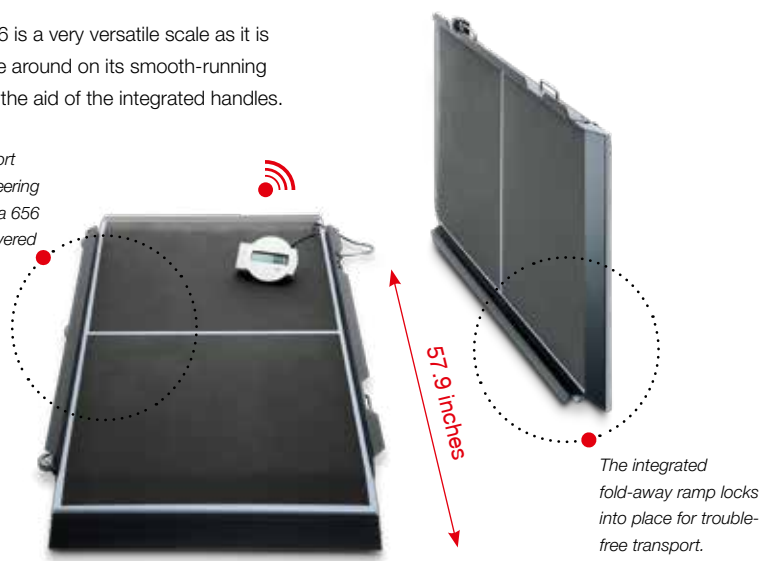
Paperless and error-free wireless transmission of measurements.

With the seca 360° wireless technology the seca 656 can transmit measurements to the optional seca 360° wireless digital printer. With the network-capable seca analytics 115 software and seca 456 USB adapter, your PC can receive and analyze measurements. The seca 656 is EMR-integrated and ready to handle all the demands the future will bring. For more information on EMR-integration, visit: www.seca.com

Castors and integrated handles for transport.

The seca 656 is a very versatile scale as it is easy to move around on its smooth-running castors with the aid of the integrated handles.

With its transport castors and steering castor, the seca 656 can be maneuvered easily.



seca 656

Technical data

- Capacity: 800 lbs / 360 kg
- Graduation: 0.1 lbs / 50 g
- Dimensions (WxHxD): 35.2 x 3.4 x 65.2" / 893 x 87 x 1,655 mm
- Dimensions platform (WxHxD): 31.5 x 2.2 x 57.7" / 800 x 55 x 1,465 mm
- Weight: 101.9 lbs / 46.2 kg
- Functions: TARE, pre-TARE, HOLD, auto-HOLD, BMI, auto-CLEAR, lbs/kg switch-over, damping, SEND/PRINT
- Power supply: Power adapter
- Optional: stand for cable remote display seca 472
- Included: Two fold-away ramps
- System compatible with: 360° wireless digital printer advanced seca 466, 360° wireless digital printer seca 465, 360° wireless USB adapter seca 456, software seca analytics 115 and seca emr flash 101, stadiometer seca 274 or seca 264
- RS232 compatible