



southpaw enterprises, inc.[®]

Store these instructions with the enclosed maintenance checklist in a safe place. You may also access them on our website.

Instruction Sheet

Prefab Joist 3 Ft. Drop Ceiling Kit 7051

WARNING! Eye bolts will wear with use and must be inspected on a regular basis. Discontinue use of eyebolt and replace immediately when wear begins to show. Do not let wear exceed 30% of the eye bolt. Take time to familiarize yourself with the use and maintenance of this equipment before using. Please file this Instruction Sheet in an accessible location: the Instruction Sheet must be read and familiar to anyone who is using Southpaw Enterprises equipment.

IMPORTANT: Please check equipment immediately for any damage that may have resulted during shipping. If any damage has occurred, please contact Southpaw Enterprises, Inc. immediately.

Warning: Failure to properly install a forged steel eyebolt (1/2" or 5/8") may result in serious injury or death. If you have any questions about the installation of the forged steel eyebolt, please contact Southpaw Enterprises Customer Service at 1-800-228-1698.

MATERIALS LIST:

2 - pcs. Strut 1-5/8" x 13/16" x 5'
1 - 5/8-18 x 3' threaded rod

Pre-assembled to strut:

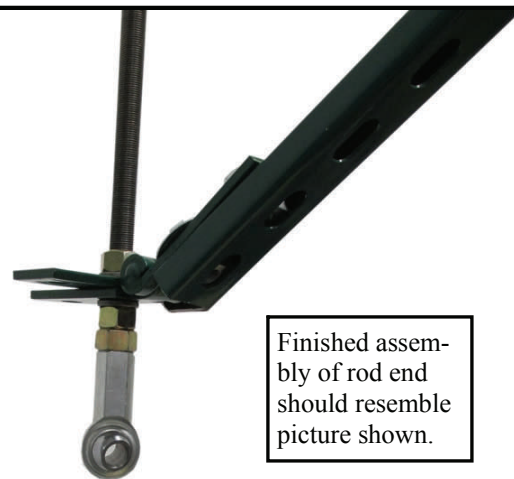
8 - 1/2-13 x 1" hex head bolts
8 - channel nuts
3 - 1/2" star lock washers
3 - 1/2" fender washers (bent)
5 - 1/2" split lock washers

WORKING LOAD: 500 LBS.

In Hardware Package:

1 - Shackle
1 - Steel ball joint rod end
1 - 1/2" fender washer (bent)
4 - 1/2" fender washers (flat)
4 - four hole hinges

2 - 1/2-13 x 2-1/2" hex head bolts
2 - 1/2-13 hex nuts
2 - 1/2" split lock washer
4 - 5/8" split lock washers
4 - 5/8" flat washers
7 - 5/8-18 hex nuts
1 - Instruction Sheet
1 - Maintenance Checklist



Finished assembly of rod end should resemble picture shown.

This kit contains everything needed for the average installation. Due to variables beyond our control in building construction (distance between joists, dimension of angle pieces in joist, etc.) you may have to vary from these instructions by replacing a bolt with one of the proper length, or cutting and shortening the length of a strut.

Due to manufacturing tolerances there is a small amount of play between the two parts of the hinge. This play does not affect the strength or safety of the hinge but it does make a slight clicking noise when using a swing on the attachment point. We have included a bent fender washer under the bolt closest to the hinge pivot point. When the bolt is tightened the fender washer will bear on the center part of the hinge and eliminate this play thus quieting the installation (see figure 4).

NOTE: We recommend that you use "Loctite 242 thread locker" on all threaded connections.

ASSEMBLY (See figure 1): Two people required for installation.

- Determine where you want to position the attachment point. The attachment point must be directly under a joist and at least 6 feet away from any walls or other obstacles. Remove the ceiling tile where you will place the attachment point. Make sure that you have no obstructions (heating ducts, wiring, lights, etc.) that will block the brace struts.
- Screw the 5/8" hex nut on the threaded rod until there is 1-1/4" of thread between the end of the rod and the nut. Hold the hex nut and screw the steel ball joint rod end onto the threaded rod against the hex nut. Do not use loctite and finger tighten only as these will have to be removed later.
- On the opposite end of the threaded rod screw on two 5/8" hex nuts. Put on a lock washer and two flat washers.
- Put the end of the threaded rod between the bottom flanges of the joist at the desired position. Screw the hex nuts down and push up on the rod until the top of the 5/8" nut is even with the inside of the ceiling tile. On the top side of the flange put two flat washers and a lock washer on the threaded rod. Screw two hex nuts onto the threaded rod. While pushing up on the rod, screw the nuts down against the top of the flange finger tight. Remove the rod end and nut from the bottom end of the rod.

- Position strut "A" with the threaded rod through the hole closest to the hinge pin and start a 5/8" hex nut on the threaded rod. Screw the nut up approximately 3" up from the bottom of the rod to hold the hinge in place while you attach the top hinge. Screw the top nut down against the top of the hinge finger tight. Put a bent fender washer on a 1/2" x 2-1/2" hex head bolt. Put the bolt through the hole closest to the hinge pin on the top hinge (see figure 4). Put the bolt between the bottom flanges of the attachment joist as shown in figure 2. Put two 1/2" fender washers and a lock washer on the bolt. Start a 1/2" hex nut on the bolt and tighten finger tight.
- Remove the bottom hex nut from the rod and put the bottom hinge of strut "B" on the threaded rod putting the rod through the hole closest to the hinge pin. Turn the brace strut towards the adjacent joist that it will be attached to. Put a 5/8" lock washer and a 5/8" hex nut on the threaded rod. Put the bottom hinge on strut "B" up against the bottom hinge of strut "A" at a 90 degree angle and tighten the bottom hex nut against the hinge finger tight.
- Loosen the bolts holding the top hinge to the strut so that the hinge will slide on the strut. Put a 1/2" x 2-1/2" hex head bolt through the end hole on the top hinge. Slide the hinge on the brace until the bolt lines up between the bottom flanges of the adjacent joist. Put the bolt between the bottom flanges of the adjacent joist as shown in figure 3. Put two 1/2" fender washers and a lock washer on the bolt. Start a 1/2" hex nut on the bolt and tighten finger tight.
- Using a level, position the threaded rod straight vertically. **Tighten All nuts and bolts securely.**
- Measure from the center of the threaded rod to one side and one end of the ceiling tile support frame. Transfer these dimensions to the ceiling tile and cut a 1" diameter hole at this location.
- Put a 5/8" hex nut on the rod and screw it up past the ceiling tile space. Screw the rod end on the threaded rod. Hold the rod end and screw the hex nut down against it and tighten securely.
- Put the ceiling tile in place in the support frame with the rod end going through the hole in the tile.
- Lower the ceiling tile into place in the support frame.
- If excessive squeaking occurs, remove shackle and lubricate ball with white lithium grease.

MAINTENANCE CHECKLIST:

All of the following wear points should be checked on a daily, weekly, or monthly basis (as indicated) and recorded on the checklist enclosed.

- Try to turn the eye bolt on a **DAILY** basis. If it turns at all, remove the eye bolt, coupling nut, and lock nuts, clean them, and then re-install per the directions using Loctite 242 threadlocker.
- Check that all nuts and bolts are tight on a weekly basis.
- **WARNING:** Check shackle for wear and movement. If more than 30% of the thickness of the shackle is worn away (See fig. 1), discontinue use until replaced. If the swivel moves excessively, discontinue use until all hardware is checked and tightened.
- Use a Southpaw Safety Rotational Device (#2000) to prevent abnormal wear and damage to equipment.

CAUTION

- ◆ **Check ceiling eye bolt for wear and movement. Do not let wear exceed 30% of eyebolt. If the eye bolt moves excessively, discontinue use until all hardware is checked and tightened. Use a Southpaw Safety Rotational Device to prevent abnormal wear.**
- ◆ **Floor mats of proper thickness should be positioned properly under and around all suspended equipment.**

Safety Precautions - The safety of your clients is dependent on the appropriate choice of activity to match, yet challenge their physical abilities. Use appropriate spotting / safety techniques. In addition, the layout of your activity area, proper installation and maintenance of your equipment is critical. Southpaw equipment is not intended for recreational or outdoor use. Under no condition should this equipment be used without proper supervision.

This sheet is for example only. It is not meant to, in any way, replace local, county, state, or Federal standards. Be aware - it is your responsibility to find all pertinent safety information that pertains to your facility.

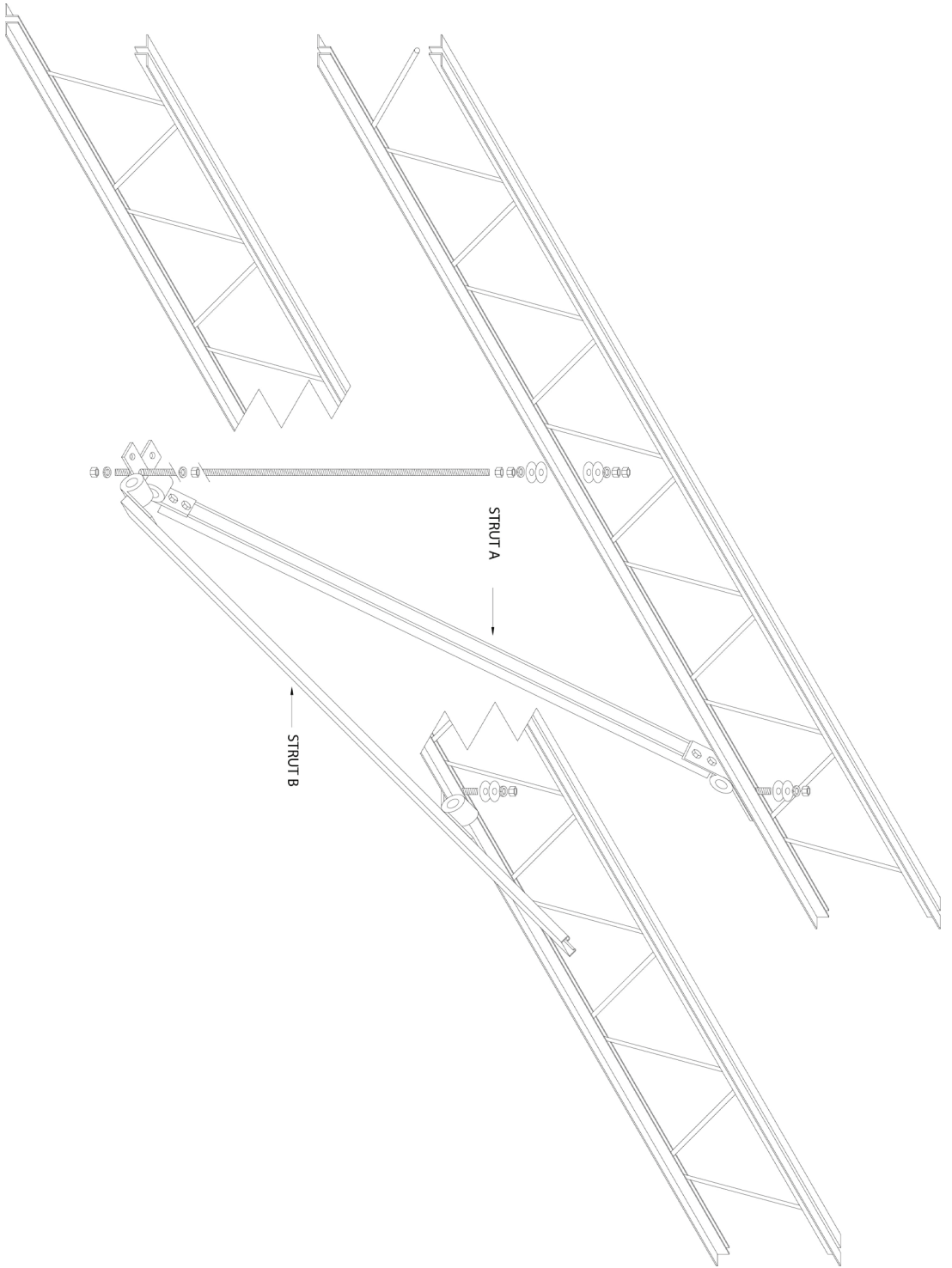


Figure 1

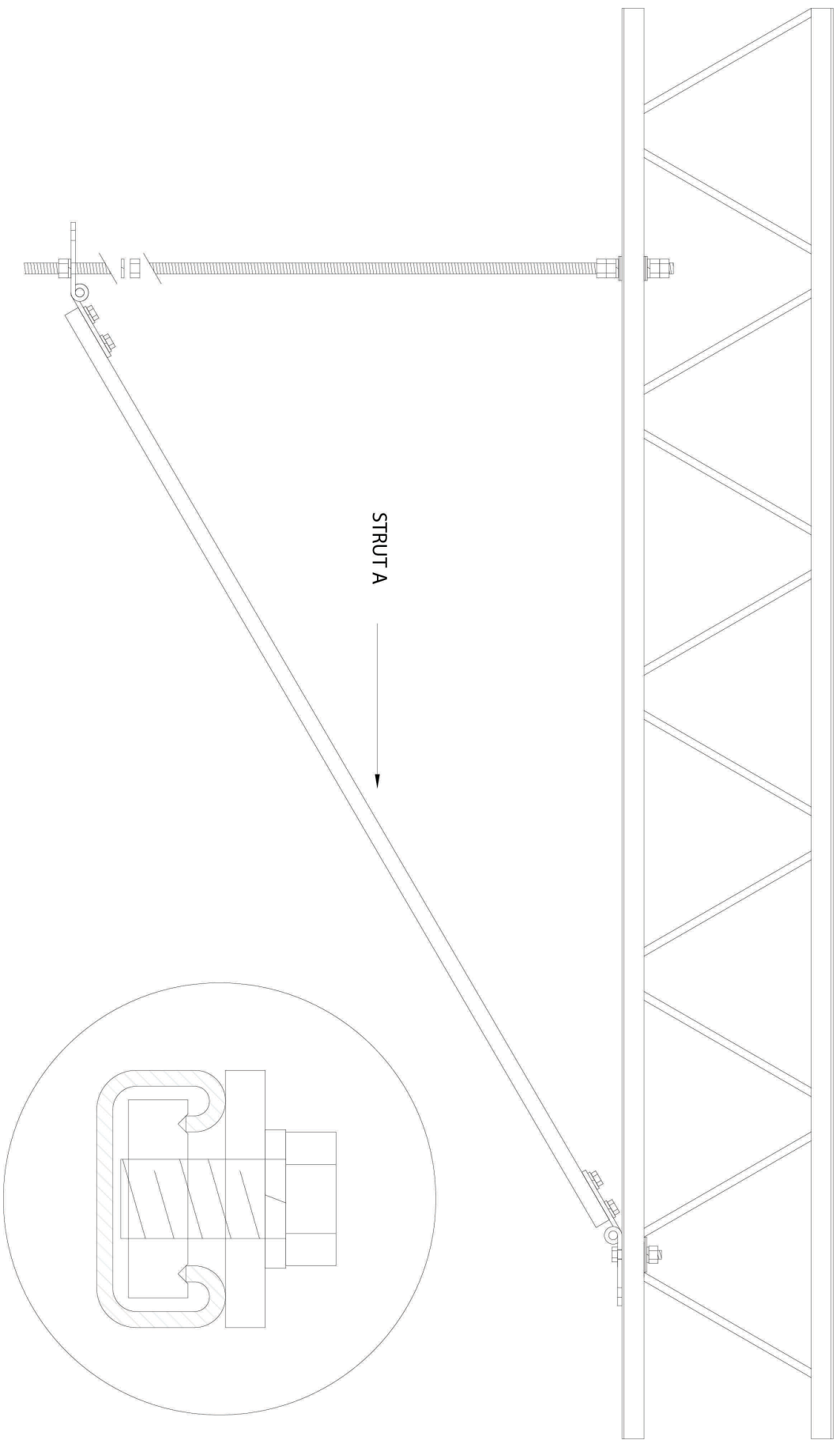


Figure 2

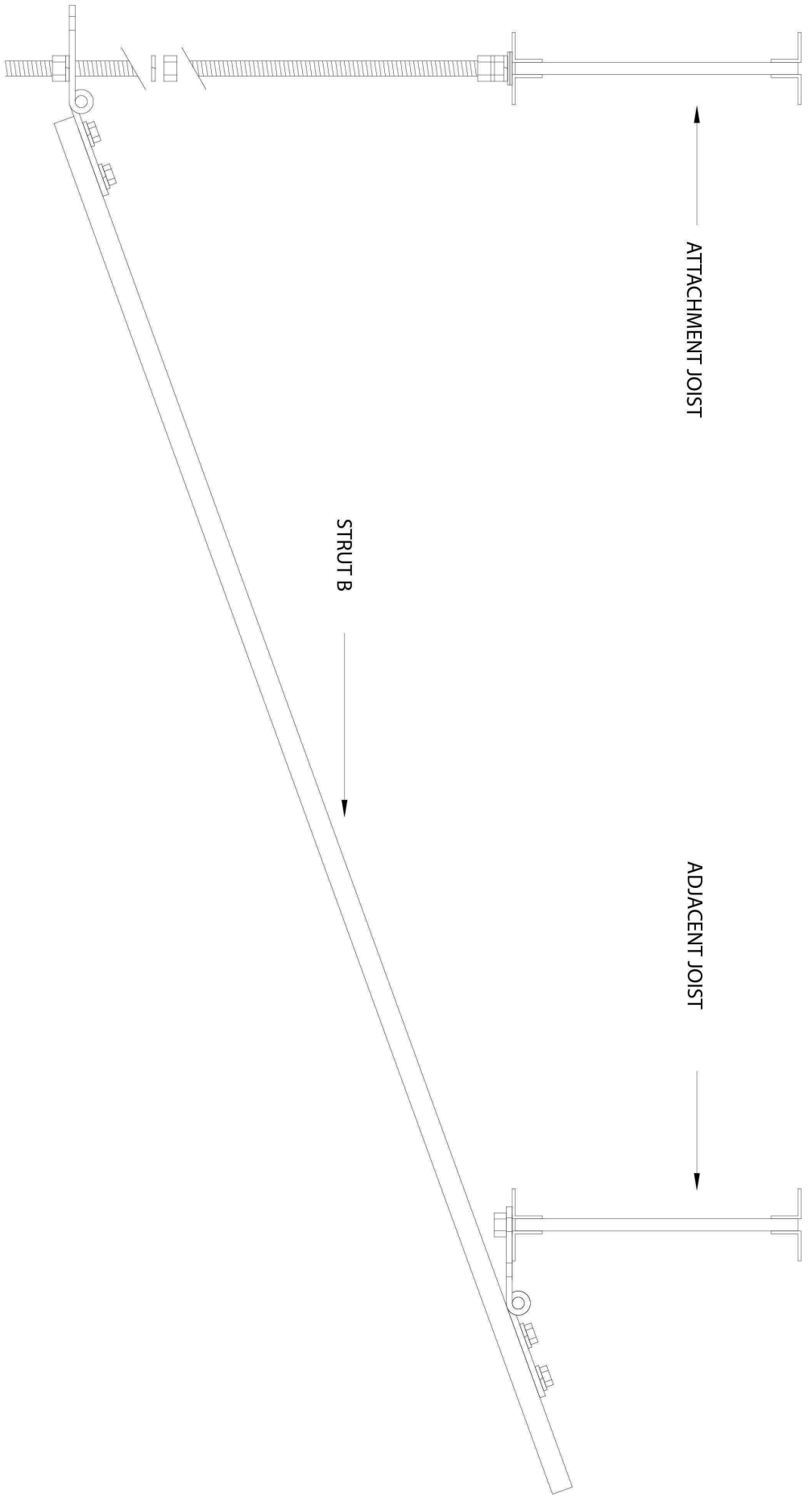


Figure 3

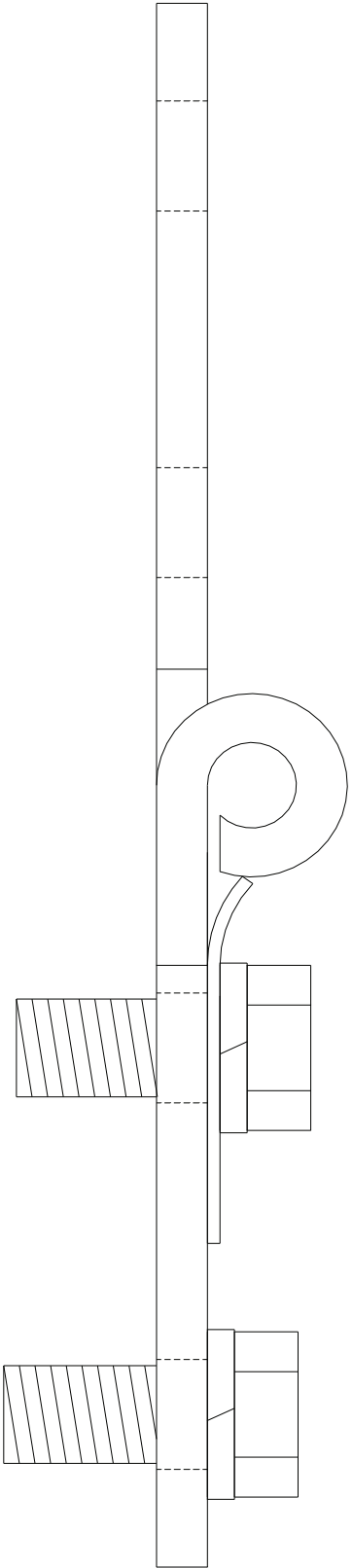


Figure 4



southpaw enterprises, inc.[®]

Store these instructions with the enclosed maintenance checklist in a safe place. You may also access them on our website.

Instruction Sheet

Prefab Joist 3-6 Ft. Drop Ceiling Kit 7061

WARNING! Eye bolts will wear with use and must be inspected on a regular basis. Discontinue use of eyebolt and replace immediately when wear begins to show. Do not let wear exceed 30% of the eye bolt. Take time to familiarize yourself with the use and maintenance of this equipment before using. Please file this Instruction Sheet in an accessible location: the Instruction Sheet must be read and familiar to anyone who is using Southpaw Enterprises equipment.

IMPORTANT: Please check equipment immediately for any damage that may have resulted during shipping. If any damage has occurred, please contact Southpaw Enterprises, Inc. immediately.

Warning: Failure to properly install a forged steel eyebolt (1/2" or 5/8") may result in serious injury or death. If you have any questions about the installation of the forged steel eyebolt, please contact Southpaw Enterprises Customer Service at 1-800-228-1698.

MATERIALS LIST:

2 - pcs. Strut 1-5/8" x 13/16" x 102"
1 - 5/8-18 x 6' threaded rod

In Hardware Package:

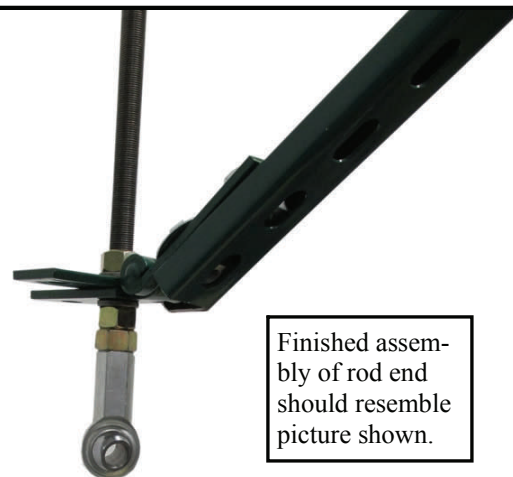
1 - Shackle
1 - Steel ball joint rod end
1 - 1/2" fender washer (bent)
4 - 1/2" fender washers (flat)

Pre-assembled to strut:

4 - four hole hinges
8 - 1/2-13 x 1" hex head bolts
8 - channel nuts
3 - 1/2" star lock washers
3 - 1/2" fender washers (bent)
5 - 1/2" split lock washers

2 - 1/2-13 x 2-1/2" hex head bolts
2 - 1/2-13 hex nuts
2 - 1/2" split lock washer
4 - 5/8" split lock washers
4 - 5/8" flat washers
7 - 5/8-18 hex nuts
1 - Instruction Sheet
1 - Maintenance Checklist

WORKING LOAD: 500 LBS.



Finished assembly of rod end should resemble picture shown.

This kit contains everything needed for the average installation. Due to variables beyond our control in building construction (distance between joists, dimension of angle pieces in joist, etc.) you may have to vary from these instructions by replacing a bolt with one of the proper length, or cutting and shortening the length of a strut.

Due to manufacturing tolerances there is a small amount of play between the two parts of the hinge. This play does not affect the strength or safety of the hinge but it does make a slight clicking noise when using a swing on the attachment point. We have included a bent fender washer under the bolt closest to the hinge pivot point. When the bolt is tightened the fender washer will bear on the center part of the hinge and eliminate this play thus quieting the installation (see figure 4).

NOTE: We recommend that you use "Loctite 242 thread locker" on all threaded connections.

ASSEMBLY (See figure 1): Two people required for installation.

- Determine where you want to position the attachment point. The attachment point must be directly under a joist and at least 6 feet away from any walls or other obstacles. Remove the ceiling tile where you will place the attachment point. Make sure that you have no obstructions (heating ducts, wiring, lights, etc.) that will block the brace struts.
- Screw the 5/8" hex nut on the threaded rod until there is 1-1/4" of thread between the end of the rod and the nut. Hold the hex nut and screw the steel ball joint rod end onto the threaded rod against the hex nut. Do not use loctite and finger tighten only as these will have to be removed later.
- On the opposite end of the threaded rod screw on two 5/8" hex nuts. Put on a lock washer and two flat washers.
- Put the end of the threaded rod between the bottom flanges of the joist at the desired position. Screw the hex nuts down and push up on the rod until the top of the 5/8" nut is even with the inside of the ceiling tile. On the top side of the flange put two flat washers and a lock washer on the threaded rod. Screw two hex nuts onto the threaded rod. While pushing up on the rod, screw the nuts down against the top of the flange finger tight. Remove the rod end and nut from the bottom end of the rod.

- Position strut "A" with the threaded rod through the hole closest to the hinge pin and start a 5/8" hex nut on the threaded rod. Screw the nut up approximately 3" up from the bottom of the rod to hold the hinge in place while you attach the top hinge. Screw the top nut down against the top of the hinge finger tight. Put a bent fender washer on a 1/2" x 2-1/2" hex head bolt. Put the bolt through the hole closest to the hinge pin on the top hinge (see figure 4). Put the bolt between the bottom flanges of the attachment joist as shown in figure 2. Put two 1/2" fender washers and a lock washer on the bolt. Start a 1/2" hex nut on the bolt and tighten finger tight.
- Remove the bottom hex nut from the rod and put the bottom hinge of strut "B" on the threaded rod putting the rod through the hole closest to the hinge pin. Turn the brace strut towards the adjacent joist that it will be attached to. Put a 5/8" lock washer and a 5/8" hex nut on the threaded rod. Put the bottom hinge on strut "B" up against the bottom hinge of strut "A" at a 90 degree angle and tighten the bottom hex nut against the hinge finger tight.
- Loosen the bolts holding the top hinge to the strut so that the hinge will slide on the strut. Put a 1/2" x 2-1/2" hex head bolt through the end hole on the top hinge. Slide the hinge on the brace until the bolt lines up between the bottom flanges of the adjacent joist. Put the bolt between the bottom flanges of the adjacent joist as shown in figure 3. Put two 1/2" fender washers and a lock washer on the bolt. Start a 1/2" hex nut on the bolt and tighten finger tight.
- Using a level, position the threaded rod straight vertically. **Tighten All nuts and bolts securely.**
- Measure from the center of the threaded rod to one side and one end of the ceiling tile support frame. Transfer these dimensions to the ceiling tile and cut a 1" diameter hole at this location.
- Put a 5/8" hex nut on the rod and screw it up past the ceiling tile space. Screw the rod end on the threaded rod. Hold the rod end and screw the hex nut down against it and tighten securely.
- Put the ceiling tile in place in the support frame with the rod end going through the hole in the tile.
- Lower the ceiling tile into place in the support frame.
- If excessive squeaking occurs, remove shackle and lubricate ball with white lithium grease.
-

MAINTENANCE CHECKLIST:

All of the following wear points should be checked on a daily, weekly, or monthly basis (as indicated) and recorded on the checklist enclosed.

- Try to turn the eye bolt on a **DAILY** basis. If it turns at all, remove the eye bolt, coupling nut, and lock nuts, clean them, and then re-install per the directions using Loctite 242 threadlocker.
- Check that all nuts and bolts are tight on a weekly basis.
- **WARNING:** Check shackle for wear and movement. If more than 30% of the thickness of the shackle is worn away (See fig. 1), discontinue use until replaced. If the swivel moves excessively, discontinue use until all hardware is checked and tightened.
- Use a Southpaw Safety Rotational Device (#2000) to prevent abnormal wear and damage to equipment.

CAUTION

- ◆ **Check ceiling eye bolt for wear and movement. Do not let wear exceed 30% of eyebolt. If the eye bolt moves excessively, discontinue use until all hardware is checked and tightened. Use a Southpaw Safety Rotational Device to prevent abnormal wear.**
- ◆ **Floor mats of proper thickness should be positioned properly under and around all suspended equipment.**

Safety Precautions - The safety of your clients is dependent on the appropriate choice of activity to match, yet challenge their physical abilities. Use appropriate spotting / safety techniques. In addition, the layout of your activity area, proper installation and maintenance of your equipment is critical. Southpaw equipment is not intended for recreational or outdoor use. Under no condition should this equipment be used without proper supervision.

This sheet is for example only. It is not meant to, in any way, replace local, county, state, or Federal standards. Be aware - it is your responsibility to find all pertinent safety information that pertains to your facility.

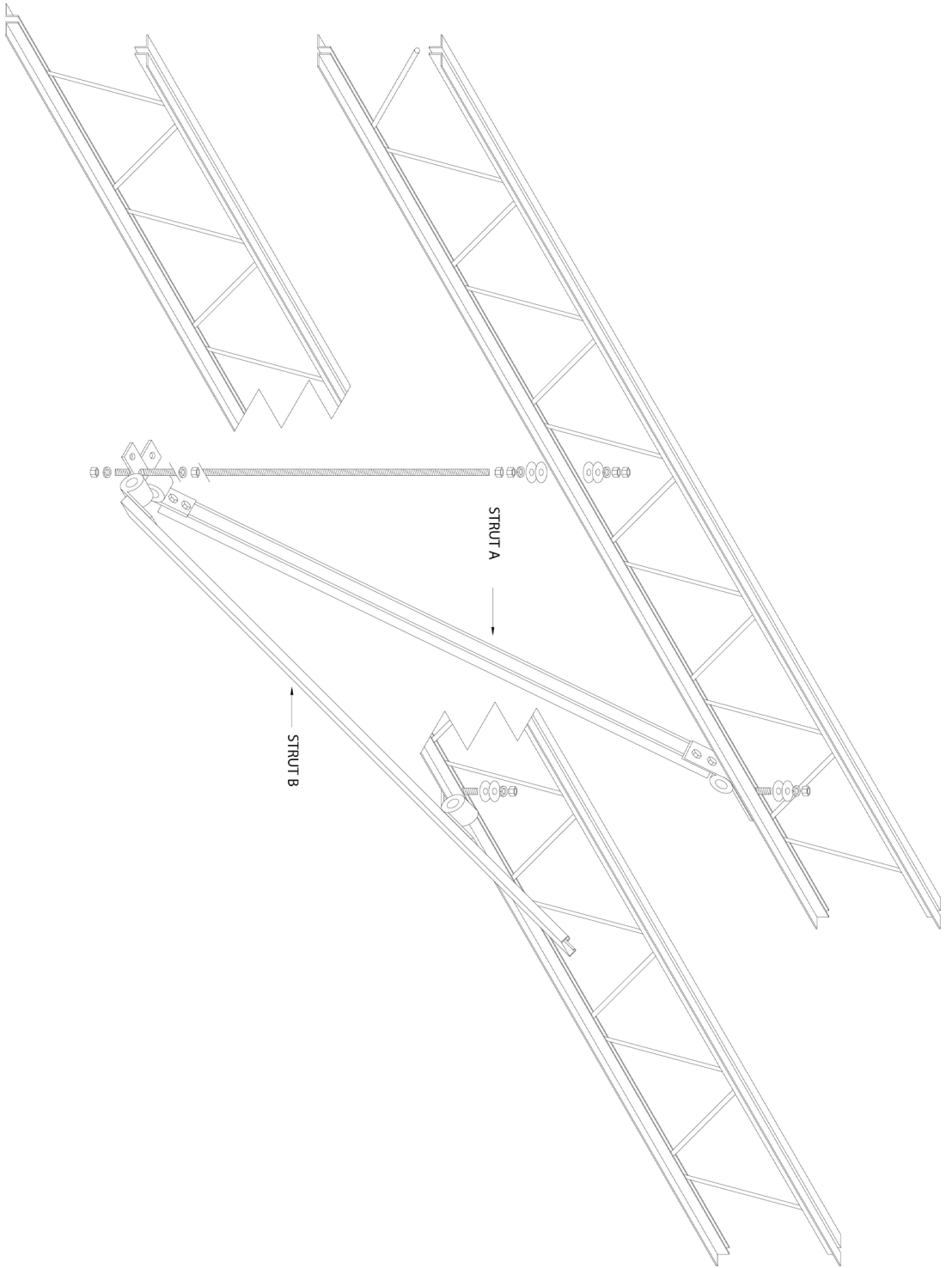


Figure 1

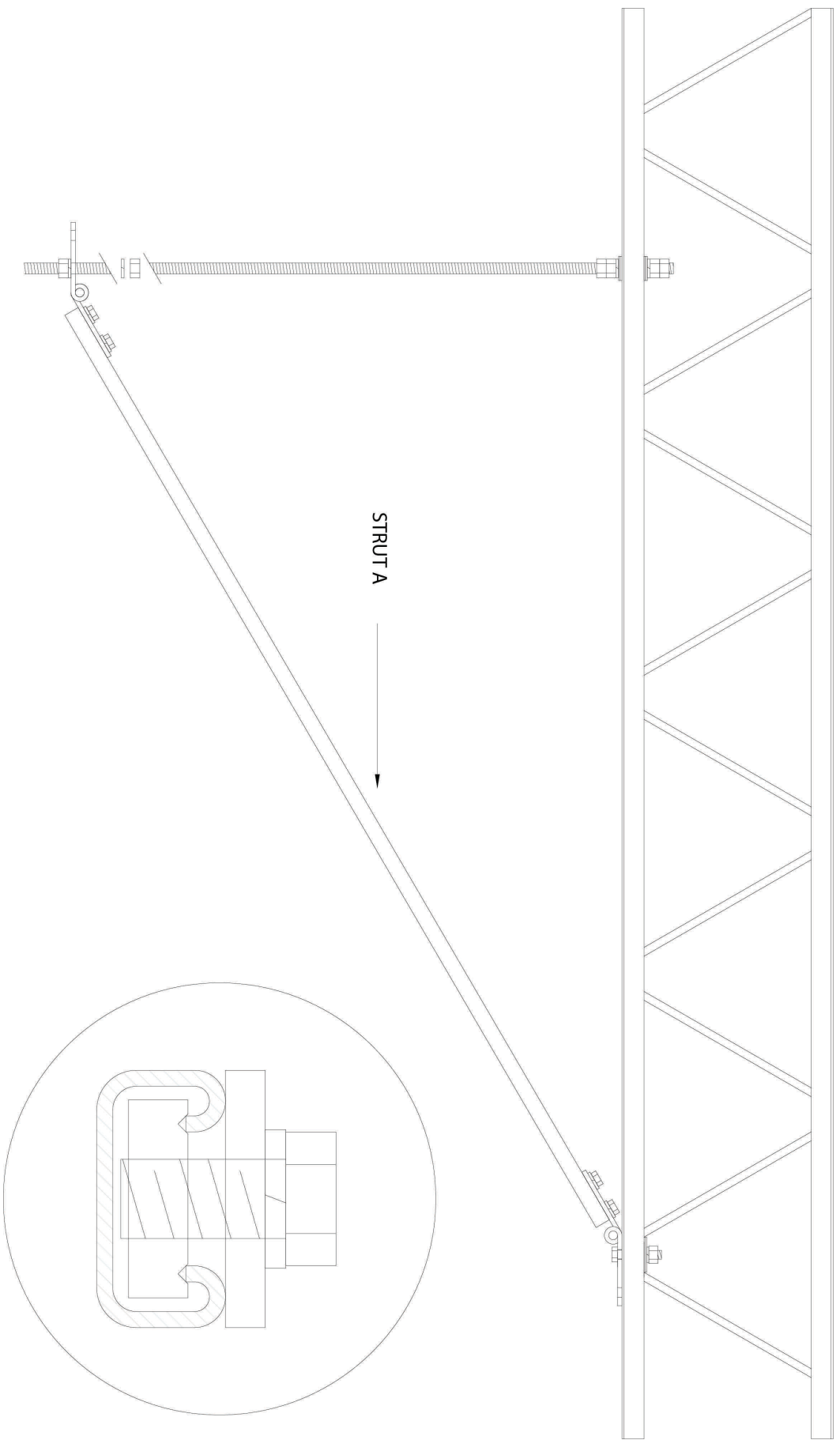


Figure 2

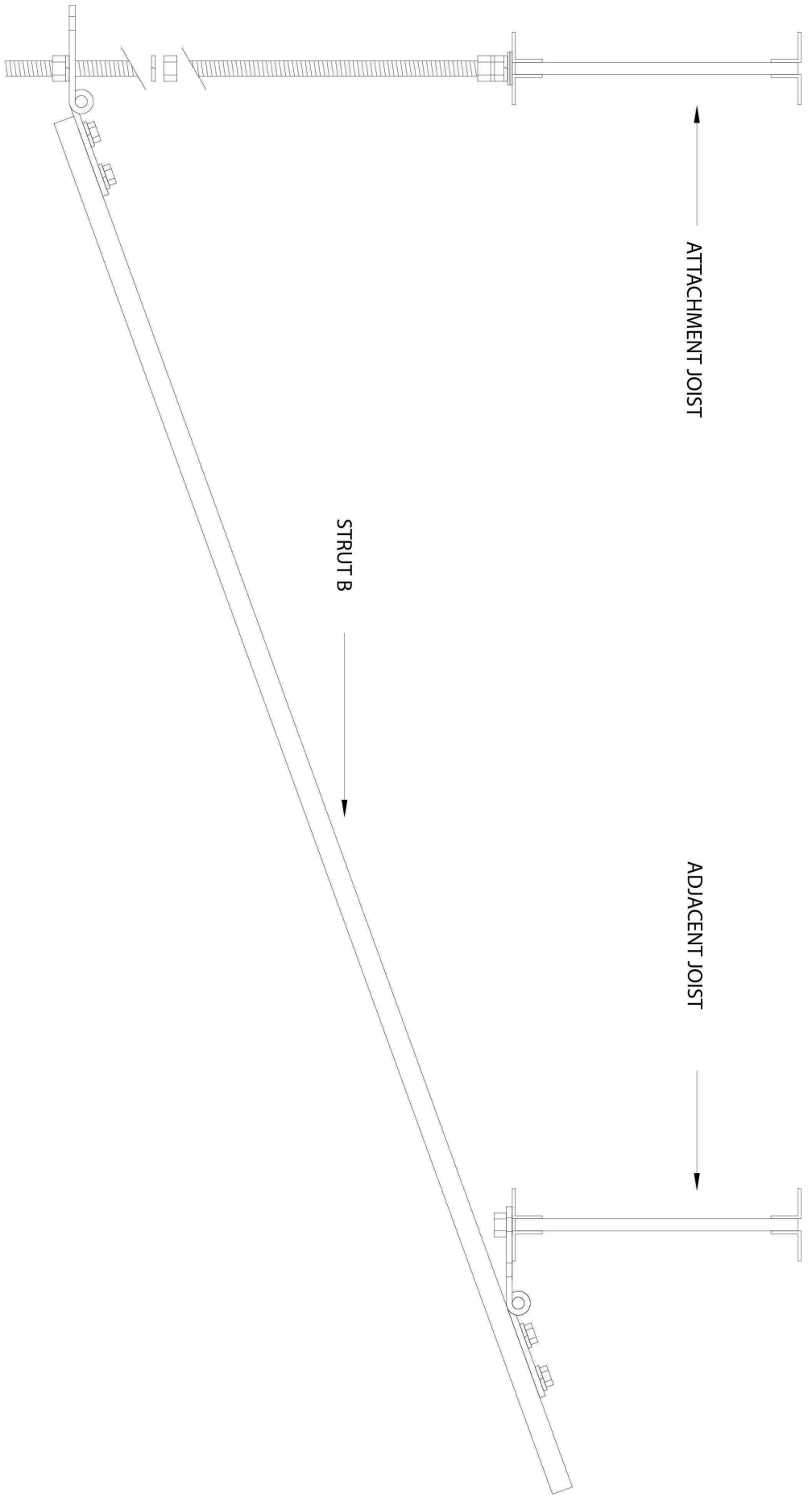


Figure 3

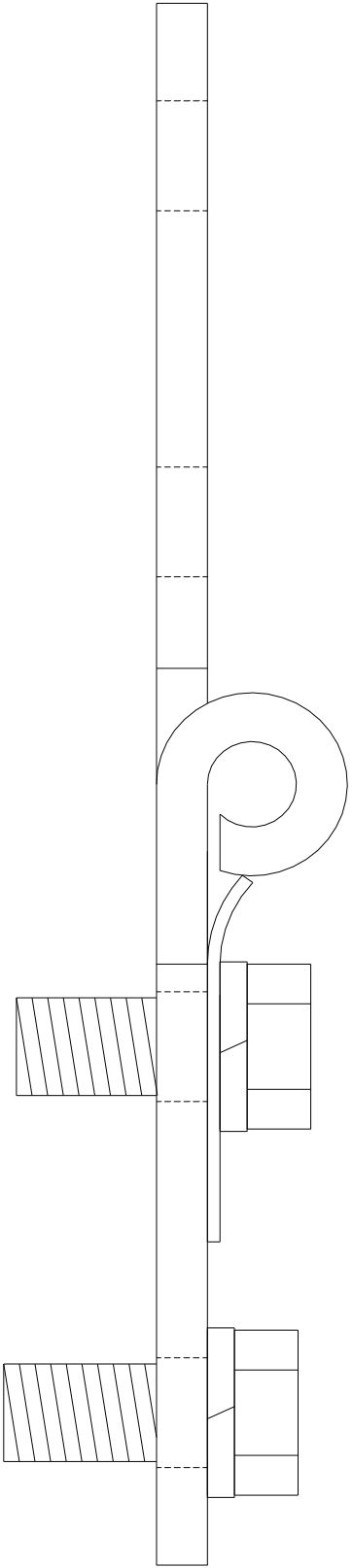


Figure 4