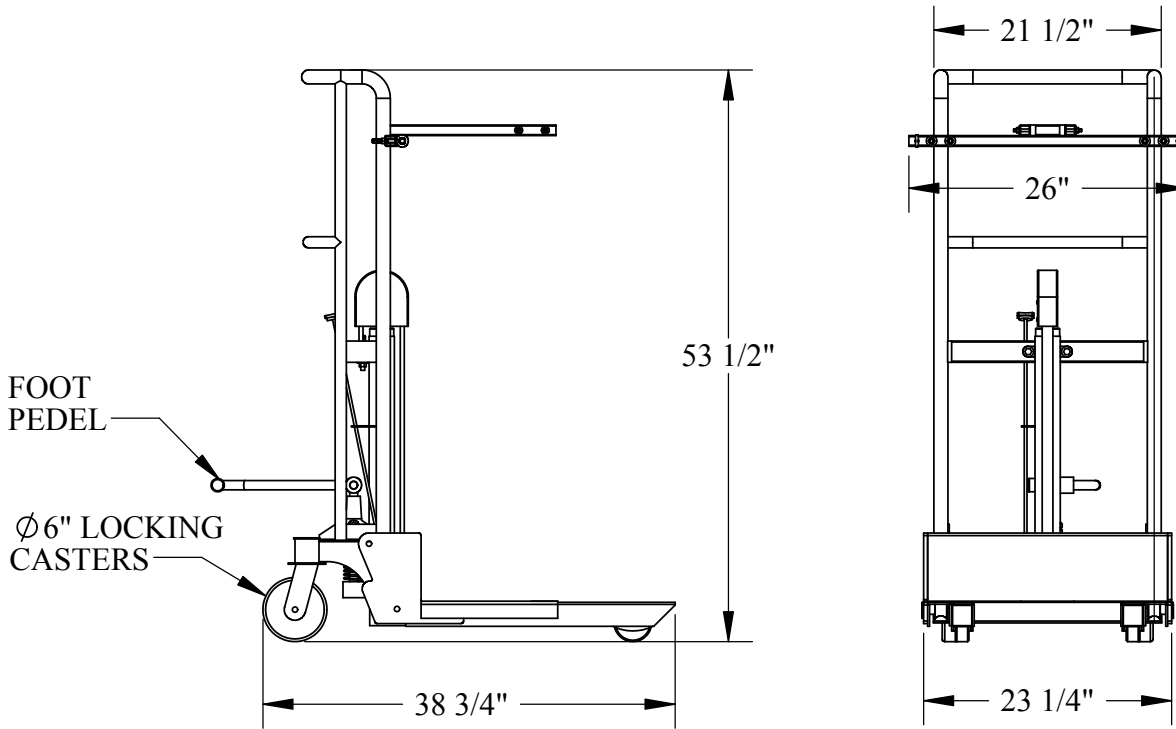


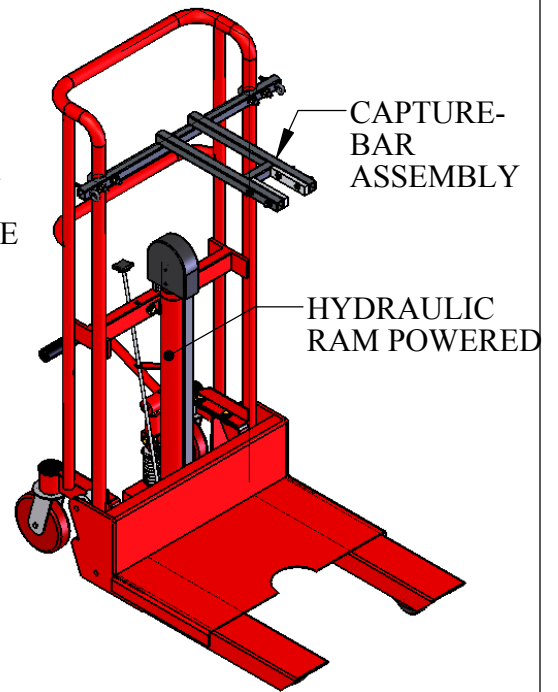
# REVOLUTION TRANSPORT CART



## SPECIFICATIONS:

THE AQUA CREEK REVOLUTION TRANSPORT CART SHALL BE A HYDRAULIC RAM POWERED TRANSPORT CART WITH CAPTURE-BARS DESIGNED TO BE USED IN THE SAFE REMOVAL AND TRANSPORT OF THE REVOLUTION LIFT. THE CART SHALL BE EASILY OPERABLE BY ONE PERSON, AND SHALL HOLD THE REVOLUTION LIFT SECURELY AND STEADILY FOR TRANSPORT AND STORAGE. IT SHALL BE CONSTRUCTED PRIMARILY OF POWDER-COATED STEEL AND STAINLESS STEEL, AND SHALL INCLUDE 6" LOCKING CASTERS. A SAFETY STRAP SHALL ALSO BE INCLUDED AS STANDARD EQUIPMENT FOR SECURING THE LIFT TO THE CART.

- MAIN ASSEMBLY: POWDER COATED CARBON STEEL
- CAPTURE-BAR ASSY: POWDER COATED 304L STAINLESS STEEL
- CASTERS: 6" LOCKING POLYOLEFIN
- FRONT WHEELS: 3.5" POLYETHYLENE



9889 GARRY MORE LANE  
 MISSOULA, MT 59808  
 (406) 549-0769  
 FAX (406) 549-2602

NOTE:  
 \*SPECIFICATIONS ARE SUBJECT TO CHANGE WITHOUT NOTICE  
 \*ALL DIMENSIONS ARE IN INCHES

PRODUCT:	F-714RTC	
DWG #:	F-714RTC-1	
SCALE:	1:18	DATE: 11/24/08
DRAWN BY:	DS	REVISION: A