



# OPERATION AND MAINTENANCE MANUAL

ALTERRA 1385, LONG TERM CARE BED



(Shown with optional side rails, mattress, head/footboards, pillows, and comforter)

This product is not made with natural rubber latex.

Packaging / Handling Instructions see Page 8.



FCE1385B

# TABLE OF CONTENTS

ENTRAPMENT.....	Page 3
Summary of FDA's Dimensional Recommendations .....	Page 4
SPECIAL NOTES AND WARNINGS .....	Page 5
SAFETY SUMMARY AND OPERATING INFORMATION .....	Page 6
SPECIFICATIONS .....	Page 7
LOCATING THE SERIAL NUMBER.....	Page 7
PACKAGING AND HANDLING .....	Page 8
INSTALLING OPTIONAL HEAD AND FOOTBOARDS .....	Page 9
INSTALLING OPTIONAL ASSIST RAILS.....	Page 10
BED OPERATION .....	Page 12
ELECTRONICS .....	Page 12
BATTERY BACKUP.....	Page 13
TROUBLESHOOTING.....	Page 14
ACTUATOR REPLACEMENT .....	Page 16
BED SCHEMATIC.....	Page 17
REPLACEMENT PARTS .....	Page 18
REORDER GUIDE .....	Page 19
MAINTENANCE.....	Page 20
MAINTENANCE SCHEDULE .....	Page 21
WARRANTY INFORMATION .....	Page 24

# ENTRAPMENT

## **WARNING: REDUCING THE RISK OF ENTRAPMENT**

Proper patient assessment and monitoring, along with proper maintenance and use of the hospital bed system is required to reduce the risk of entrapment. The term “hospital bed system” encompasses the bed frame and its components, including the mattress, side rails, head and footboards and accessories to the bed. Variations in bed rail dimensions and mattress thickness, size and/or density could increase the risk of entrapment.

The FDA and The Hospital Bed Safety Workgroup (HBSW) have developed written guidance that outlines specific potential entrapment zones in hospital bed systems, **“Hospital Bed System Dimensional and Assessment Guidance to Reduce Entrapment”**. The entrapment zones represent the relationship of the various bed system components which are under the control of the bed user and the healthcare facility. Compliance to the FDA guidelines to reduce entrapment risk is ultimately the responsibility of the bed user and the healthcare facility. It is strongly recommended that all personnel involved with hospital bed system maintenance, service or use, should understand the FDA Guidelines. Visit the FDA website at <http://www.fda.gov> to acquire a copy of the guidelines and learn about the risks of entrapment.

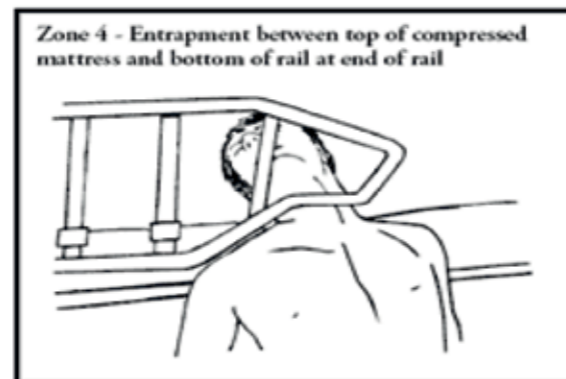
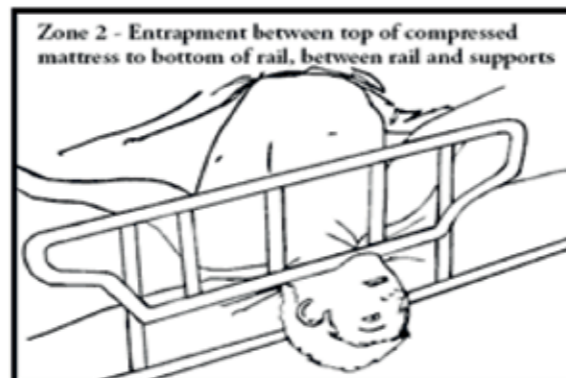
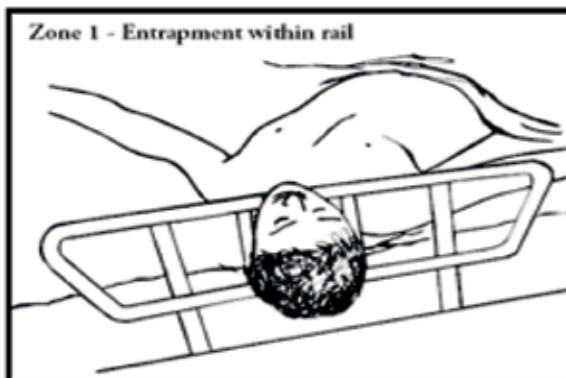
The Medline FCE1385B bed system and corresponding rails (FCE1232RSR, FCE1232RSRN, FCE1232RSRXT, FCEQRSIDE and FCE1232ABN) meet or exceed the FDA guidelines and are in accordance with this document for recommended Zones 1-4 when used with Medline brand mattresses.

The FDA guidance document also recognizes potential entrapment Zone 6, the area between the head or foot board and the side rail, but has not yet determined proper dimensions or requirements for safety in this zone. The document references standard IEC60601-2-38 as a source for measurements in this area, but the FDA has not completed harmonization with the measurements in this IEC document. The Medline side rails listed above do meet the dimensional requirements for the Zone 6 area that are defined by IEC60601.



## SUMMARY OF FDA'S DIMENSIONAL RECOMMENDATIONS

Key zones of the bed	Dimensions
Gaps within the rail ( <b>Zone 1</b> )	<120 mm (< 4 3/4 ")
Under the rail, between rail supports or next to a single rail support ( <b>Zone 2</b> )	< 120 mm (< 4 3/4 ")
Between rail and mattress ( <b>Zone 3</b> )	<120 mm (< 4 3/4 ")
Under the rail, at the ends of the rail ( <b>Zone 4</b> )	<60 mm (< 2 3/8 ") AND >60° angle



## SPECIAL NOTES AND WARNINGS

**WARNINGS/CAUTION NOTICE** in this manual applies to hazards or unsafe practices which could result in personal injury and/or property damage.

### NOTICE

The information in this document is subject to change without notice. Check all parts for shipping damage and test before using. **DO NOT USE IF DAMAGED.** Contact Medline Industries Inc. Customer Service (1-800-MEDLINE) and the freight carrier for further instruction. Technical information regarding the bed will be available upon request. This bed has been tested and inspected prior to shipment.

### ⚠ CAUTION

**DO NOT OPERATE THIS BED WITHOUT FIRST READING AND UNDERSTANDING THIS MANUAL. IF YOU ARE UNABLE TO UNDERSTAND THE WARNINGS, CAUTIONS AND INSTRUCTIONS, CONTACT YOUR MEDLINE SALES REP OR MEDLINE CUSTOMER SERVICE BEFORE USING THIS EQUIPMENT OTHERWISE INJURY OR DAMAGE MAY RESULT.**

- **Do not** use near explosive/flammable gases
- Possible fire hazard when used with oxygen administering equipment other than nasal or masked types.
- When administering oxygen with nasal or mask equipment, oxygen or air tubing **MUST** be routed and secured properly to ensure tubing does not become entangled, pinched or severed during operation of bed.
- Close supervision is necessary when this product is used by or near **CHILDREN OR PEOPLE WITH DISABILITIES.**
- **NEVER PERMIT ANYONE UNDER THE BED AT ANYTIME.**
- When operating or moving the bed, **ALWAYS** ensure the individual in the bed is positioned properly within the confines of the bed.
- **DO NOT** allow extremities to protrude over the side of the bed or between the rails when performing bed functions.

### SAVE THESE INSTRUCTIONS

**SERVICE/MAINTENANCE PERSONNEL:** The bed is a heavy piece of equipment. It is strongly recommended that any servicing or maintenance of the bed be performed by two or more personnel.



## SAFETY SUMMARY AND OPERATING INFORMATION

- After installation and before use, ensure all attached hardware is securely tightened
- Hand pendant cord must be routed and secured properly to ensure cord does not become entangled, pinched, or severed during normal bed operation.
- Keep all moving parts free from obstruction (i.e. blankets/sheets, heating blankets/pads, tubing, wiring, etc.) or with any other products that use electric cords which could get tangled around the bed, side rails or legs during operation of bed.
- Beds are equipped with folding central lock. To operate the central lock, pull out foot pedal, depress to lock and push back to starting position. To unlock, pull out foot pedal, depress to unlock and push back to starting position. A green indicator should be visible once unlocked. **ALWAYS** use lock **EXCEPT** when moving the bed. Pads can be adjusted by rotating them clockwise or counter-clockwise to ensure proper contact with floor.
- The side rails are **NOT** intended to be used as a patient restraint. If necessary, a physician or healthcare professional should be consulted for other means of safe restraint.
- Be sure to fully lock side rails / assist bars in the fully up or down position. Failure to lock the accessories may result in unintentional movement and injury to patient or caregiver.
- When using side rails, excessive side pressure can cause the rails to deform or break. **DO NOT USE** side rails as handles to move the bed.
- **NEVER** permit more than 1 person in or on bed at any time. The safe working load for this bed is rated at 500-lbs.
- Body weight should be evenly distributed over the surface of the bed.
- **DO NOT** use the bed as a patient transport.
- A person **SHOULD NOT** lay, sit or lean in such a way that his or her entire body weight is placed only on the **RAISED** head or foot sections of the bed. This includes **ASSISTING** the user in repositioning or transferring in or out of bed.
- **DO NOT ALTER THE PLUG ON THE ELECTRICAL CORD.** If the plug does not fit the existing outlet, a correct outlet should be installed by a licensed electrician. **NEVER** operate the unit if it has a damaged cord or plug.
- **UNPLUG** the power cord when performing any maintenance (including cleaning) on the bed.
- **DO NOT** open or disassemble any factory sealed electronics. If these units are opened, the warranty is void.
- **DO NOT** plug the bed into an outlet greater than 120V.
- **DO NOT** permit excessive prolong activation of the bed's electrical function (duty cycle). Exceeding the rated duty cycle of the electronics may cause damage or failure of bed function.  
(Duty Cycle = 10%: 2min on; 18min off)
- If all four bed casters are not locked, bed movement may occur with little or no resistance. Always activate caster locks during patient transfer or use of the bed.
- The bed is intended for indoor use only.
- **DO NOT** cover the bed's power cord with rugs, carpet, etc.

- Inspect the bed for damage and normal operation periodically. Report any damage, abnormal operation, unusual noise or odor immediately to the maintenance department and discontinue use of the bed.

**WARNING:** Mattress retainers **MUST** be used at **ALL TIMES** to reduce the risk of entrapment.

## SPECIFICATIONS

Bed Deck Length	79-3/4"
Bed Deck Width	34-1/2"
Overall Width (Including Side Rails)	39-1/2"
Overall Length with Foot Lock Extended	98-1/4"
Overall length with Foot Lock Retracted	88-1/2"
Minimum Bed Deck Height	7-3/4"
Maximum Bed Deck Height	29-7/8"
Maximum Safe Working Load*	500-LBS
Maximum Back Angle	70-Degrees +/-3
Maximum Knee Angle	29-Degrees +/-3

Bed Electronics Comply with IEC60601-2 EMC requirements

\* This includes weight of the resident/patient and all other accessories including but not limited to mattresses, head/foot boards, side rails, etc.

## ELECTRICAL SPECIFICATIONS

Power: 120 V.A.C., 2A, 60HZ

Duty Cycle: 10% Max. (2 min. on./18 min off)

## LOCATING THE SERIAL NUMBER



**ALTERRA 1385 FULL ELECTRIC HI-LOW BED**  
**LIT ENTIÈREMENT ÉLECTRIQUE À HAUTEUR VARIABLE ALTERRA 1385**  
**CAMA RECLINABLE COMPLETAMENTE ELÉCTRICA ALTERRA 1385**

**REF FCE1385B**

**MAX WEIGHT CAPACITY 450 LBS**  
**POIDS MAXIMUM 204 KG.**  
**CAPACIDAD MÁXIMA DE PESO 204 KG.**

[www.medline.com](http://www.medline.com)  
 Manufactured in China for/Fabriqu  en Chine pour/Fabricado en China para:  
 Medline Industries, Inc., Three Lakes Drive, Northfield, IL 60093 USA. **1-800-MEDLINE**

 **SN**  
 (01) 10888277 100022 **PO:**

 Contains Nonspillable Sealed Lead-Acid Battery. Battery Must Be Recycled.  
**Pb**

- The serial number label is located on the center of the left side bed frame.
- Please have the serial number and model number of the bed available when calling Medline Customer Service for parts and/or troubleshooting.

# PACKAGING/HANDLING

## RECEIVING

It is imperative that all shipments are inspected within 14 days in order to make a freight claim for any concealed damage.

1. Count cartons before signing shipping papers.
2. Compare the number of cartons shipped with the number actually received.
3. Visually inspect all cartons for any damage.
4. If number of packages shipped and received do not match up or if there is any damage to carton, note on freight bill and have driver sign acknowledging the claim and notify your Medline sales rep or Medline Customer Service (1-800-MEDLINE).

## UNPACKING

**CAUTION:** The bed is extremely heavy; unpack with two or more people.

1. Remove bands and top
  2. With at least TWO people, remove the bed from the carton by lifting underlying and rotating frame of bed so the casters are facing down. Place it on level ground next to the carton.
- \*\* If at this point, you discover concealed damage, immediately contact Medline Customer Service and take photographs to document the damage for the freight claim.
3. Inspect plug and cord for any cuts or damage. If there isn't any damage, plug in the bed and elevate the bed deck to a comfortable working height.
  4. Cut the cable tie holding the power cord and the hand pendant, being careful not to damage cords or cables.
  5. Cut the cable ties holding deck sections, being careful not to damage cords or cables.
  6. Insert the wall guard into the head section H-frame using a rubber mallet if necessary.



## INSTALLING OPTIONAL HEAD AND FOOTBOARDS

Tools Required: Philips Screw Driver, Rubber Mallet

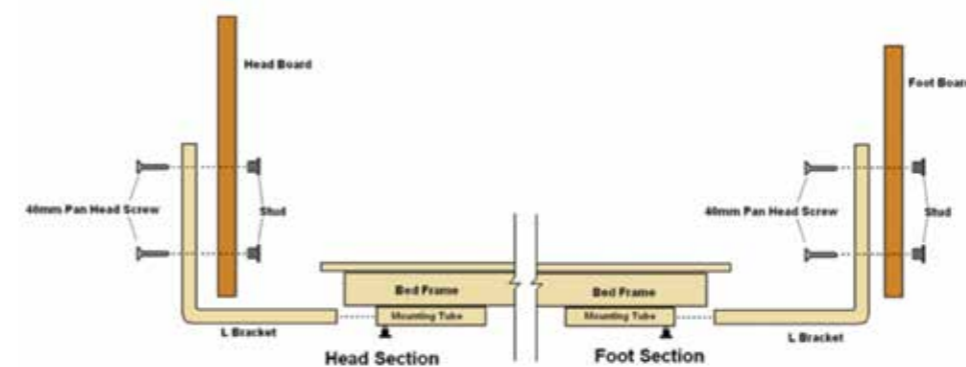
Materials Required: Head and Footboards and Hardware Kit (FCE1232HDW)

### HEADBOARD INSTALLATION

1. The headboard comes with four pre-drilled mounting holes. Locate and install screw inserts into each hole (this may require a rubber mallet). Use caution as to not damage the surface of the headboard. The surface with the screw inserts visible will be the inside of the headboard.
2. Position two L-brackets on the outside of the headboard with the "L" facing inwards.
3. Align both holes of the L-brackets with the top and bottom holes in the headboard.
4. Insert and tighten each 40mm pan-head screw through all four holes.
5. Slide the L-brackets into the mounting tubes on the head end of the bed. The bracket should rest in place with the snap buttons.
6. Tighten knobs under each mounting tube.

### FOOTBOARD INSTALLATION

1. The footboard comes with four pre-drilled mounting holes. Locate and install screw inserts into each hole (this may require a rubber mallet). Use caution as to not damage the surface of the footboard. The surface with the screw inserts visible will be the outside of the footboard.
2. Position two L-brackets on the inside of the footboard with "L" facing inward.
3. Align the both holes of the L-brackets with the top and bottom holes in the footboard.
4. Insert and tighten each 40mm pan-head screw through all four holes.
5. Slide the L-brackets into the mounting tubes on the foot end of the bed. The bracket should rest in place with the snap buttons.
6. Tighten knobs under each mounting tube.



# INSTALLING OPTIONAL ASSIST RAILS

Tools Required: Adjustable Pliers

Materials Required: Assist Rails (FCE1232RSR, FCE1232RSRN or FCE1232RSRXT)

**CAUTION:** Follow the installation instructions carefully and check that all hardware/fasteners are properly installed and tight. Failure to do so may result in unexpected movement of the rails and could result in patient or caregiver injury.

## FCE1232RSR

1. Install standard assist rails by sliding rods into head section holes in bed deck.



2. Locate and install C-clips into grooves on the rods of the head section assist rails until they are fully engaged. Place C-clips on each side of the deck section rod tab as shown below.

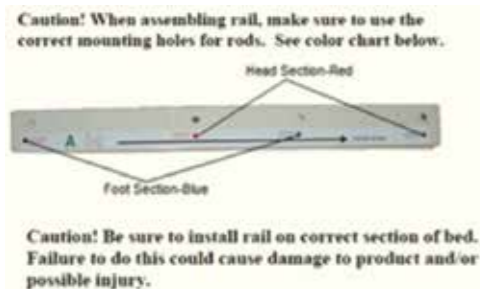


2 C-Clips

3. Check that all parts are tight prior to use.

## FCE1232RSRN, FCE1232RSRXT, FCEQRSIDE, or FCE1232ABN

1. Mount the mounting pins onto the assist rails. Mounting holes are labeled HEAD SECTION and FOOT SECTION for proper pin alignment.



2. Locate and install C-clips into grooves on the rods of the head section assist rails until they are fully engaged. Place C-clips on each side of the deck section rod tab as shown below.



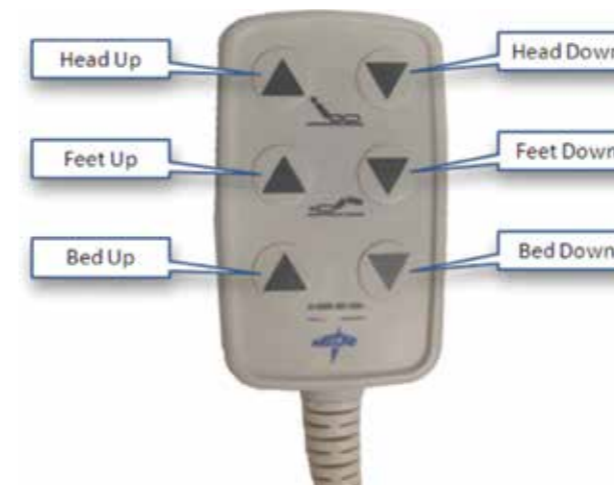
2 C-Clips

3. Tighten each mounting rod using a 5mm Allen wrench and a 1/2" open end wrench.

# BED OPERATION

Bed functions are operated with a six-button (3-function) hand pendant. Button functions on the hand pendant are identified with universal icons. The hand pendant comes with a slotted clip for suspending the control on assist rails or headboards.

**CAUTION:** Prior to raising or lowering the bed and/or assist rails, ensure that the cord for the hand pendant has not become entangled in bed parts. The cord should be kept clear or moving parts at all times.



The bed has a rolling base that allows it to be rolled or locked at any height. To lock the bed, activate the folding central lock located on the foot end of bed frame by depressing the foot pedal. Secure the individual locking casters. To roll the bed, disengage the central lock by pressing the pedal and release the individual caster locks. Activating the folding central lock does not disengage the bed's functions.



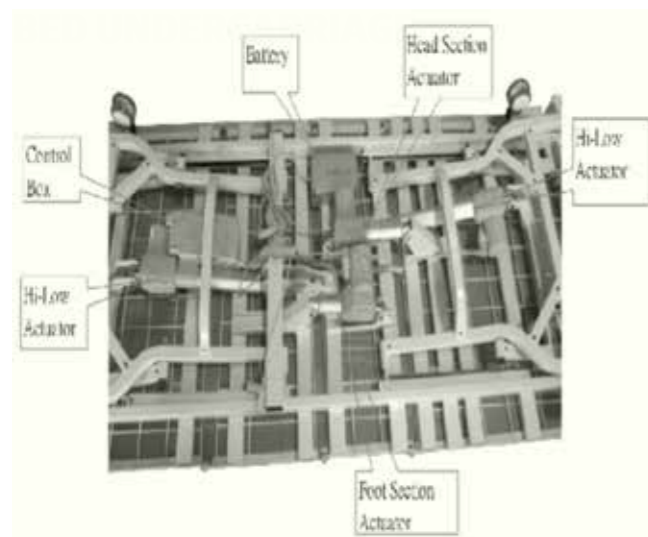
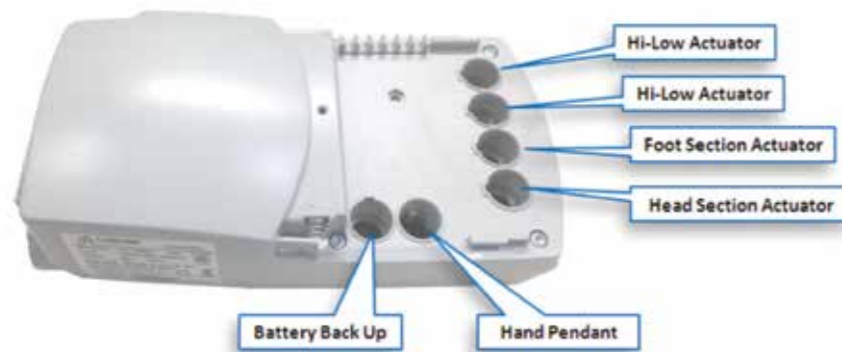
## ⚠ CAUTION

If all four casters are not locked, swivel and wheel rotation will allow bed motion with little or no resistance. This can result in loss of balance, fall and personal injury. Ensure that all four casters are locked to avoid any bed movement during resident transfer and/or use. The central locking mechanism can be used for most situations where locking casters are needed. However, movement near the head section of the bed may still result if force is applied. The bed will be most secure if the head end casters are locked along with the central lock and/or foot end casters.

## ELECTRONICS

### CONTROL BOX

The picture below shows the various control box connections with actuators, hand pendant and battery backup.



## BATTERY BACKUP

In the event of a power failure, the bed comes standard with a battery backup feature that enables the bed to be lowered without AC power. Keep the battery backup plugged into control box to ensure activation. Battery must be charged for a minimum of 12 hours prior to use.

The battery backup unit will recharge when AC power is reestablished.

## ⚠ CAUTION

- Improper handling and/or exposure to heat could result in bodily injury.
- The battery back-up is a factory sealed unit. **DO NOT ATTEMPT** to open/repair unit.
- Contains sealed lead battery. Battery must be recycled.

## REPLACING BATTERY

Tools Required: Flat Head Screw Driver, T25 Torx Screw Driver

## ⚠ CAUTION

Follow the installation instructions carefully and check that all hardware/fasteners are properly installed and tight.

1. Disconnect AC power
2. Remove the control box cover by using a flat head screw driver. Insert the screwdriver into the control box cover slot marked "INSERT TO OPEN". The control box cover should now slide away from the control box.
3. Unplug the battery backup cable from the control box. Please refer to page 13 for the battery backup cable location on the control box.
4. Cut and remove all cable (zip) ties holding the battery backup cable.
5. Using a T25 Torx screwdriver remove the all 4 mounting screws. Support the battery when removing the last screw. Use caution the battery backup weighs approximately 4 pounds.
6. Using a T25 Torx screwdriver install the new battery backup unit with all 4 mounting screws.
7. Carefully route the battery backup cable from the battery to the control box. Please make sure the cable does not get pinched or cut during normal bed operation.
8. Secure cable in place with zip-ties
9. Reconnect the battery backup cable into the control box port.
10. Replace the control box cover.
11. Reconnect AC power

Please recycle the original battery backup unit.

## TROUBLESHOOTING

Symptom	Possible Cause		Remedy/Solution
None of the functions work	Hand pendant?	Is hand pendant plugged in?	Plug in hand pendant
		Did you try another pendant from working bed	Use different hand pendant from a working bed
	Does the bed have staff control?	Are the lock-out functions engaged?	Disengage lock-out functions
		Is the staff control wired to the control box properly?	Plug hand pendant directly into "HB" port of control box
	Power?	Is the bed plugged into an outlet?	Plug bed into wall outlet
		Is the power outlet on a switch?	Turn switch on, check fuse box, or try another wall outlet Verify bed power source (outlet) is adequate for bed electrical rating
		Has the power cord become loose from the control box	Insert power cord fully into control box
		Is the power cord damaged?	Replace power cord
	Functions work but bed moves slowly	Power?	Is the bed plugged into an outlet?
Is the power outlet on a switch?			Turn switch on, check fuse box, or try another wall outlet Verify bed power source (outlet) is adequate for bed electrical rating
Has the power cord become loose from the control box?			Insert power cord fully into control box
Is the power cord damaged?			Replace power cord
Grinding noise heard from one of the actuators	Actuator gear is stripped	Actuator gear is stripped, replace actuator	Replace actuator

## TROUBLESHOOTING (CONTINUED)

Symptom	Possible Cause		Remedy/Solution
One of the actuators is not functioning	Hand pendant?	Try another pendant from working bed	Use a different hand pendant from a working bed
		Actuator?	Insert actuator cord into another working port of the control box
	Actuator cable?	Verify actuator cable is not damaged	If damaged, or Cut replace actuator cable
		Verify actuator cable plug is inserted completely in actuator and control box	Push actuator cable plug firmly into actuator/control box
	Control Box	Insert actuator cord into another working port on the control box	If actuator works on a different port of the control box
	Bed is not level when operating High-Low functions		Bed load is not evenly distributed
Actuators operate but wrong movement occurs	Control box wiring?	Actuators are plugged into the wrong ports	Plug actuators into proper ports on control box Replace control box

**IF USE OF THIS TROUBLE SHOOTING GUIDE DOES NOT CORRECT THE PROBLEM, PLEASE CALL MEDLINE TECHNICAL SUPPORT AT 1-800-MEDLINE.**

### CAUTION

SERVICE / MAINTENANCE PERSONNEL

The bed is a heavy piece of equipment. It is strongly recommended that any servicing or maintenance of the bed be performed by two or more personnel.





# ACTUATOR REPLACEMENT

## HEAD AND FOOT ACTUATORS

1. Unplug the bed from AC power.
2. Unplug the actuator cable.
3. Remove the clevis pin, cotter pin and spacers from both the motor and piston sides of the actuator.

**Attention:** Note the location of all bushings, washers, cable ties, wire routing and hardware for proper reassembly.

4. Install the new actuator at the motor end first then piston end, using the original clevis pin, cotter pin and any spacers that were removed in Step 3. Installing the motor end first will reduce possible damage to spindle and piston mechanism of the actuator.
5. Plug in the actuator cable.
6. Reconnect AC power.
7. Test the bed by raising and lowering the head and foot sections

## HIGH-LOW ACTUATORS

### ⚠ CAUTION

- Remove ALL accessories mounted to the bed (assist rails, assist bars and head and footboards). Failure to do so could result in the bed being unstable causing injury.
- The bed must be turned on its side before replacing actuators. A minimum of two people are required to turn bed on its side.
- Fully elevate the bed deck and head section before turning the bed on its side to create a more stable work platform.

1. Remove all accessories mounted to the bed (assist rails, assist bars and head and footboards).
2. Elevate the bed to its highest position and raise the head and foot sections.
3. Unplug the bed from AC power.
4. With at least TWO people, carefully turn the bed on its side.
5. Remove the clevis pin, cotter pin and spacers from both the motor and piston sides of the actuator.

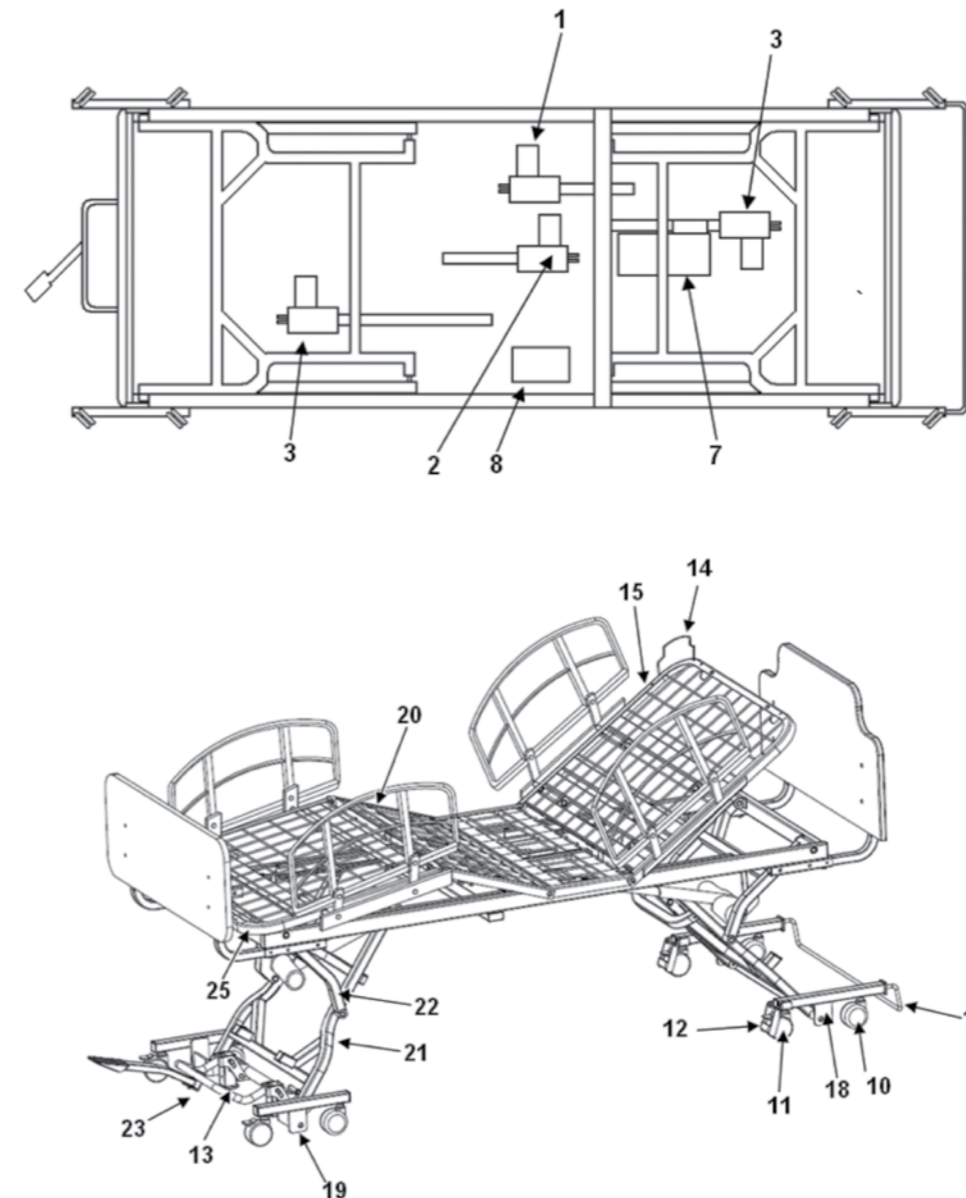
**Attention:** Note the location of all bushings, washers, cable ties, wire routing and hardware for proper reassembly.

8. Install the new actuator at the motor end first then piston end, using the original clevis pin, cotter pin and any spacers that were removed in Step 5. Installing the motor end first will reduce possible damage to spindle and piston mechanism of the actuator.
6. Plug in the actuator cable.
7. With at least TWO people, carefully return the bed to the upright position.
8. Reconnect AC power.

9. Re-synchronize the self-leveling hi low motors by lowering the bed to its lowest position and holding the elevation down button on the hand pendant an additional 5 seconds after the bed has reached its lowest elevation
10. Test the bed by raising and lowering elevation.

**NOTE:** When replacing head and foot actuators, special care needs to be taken to secure all wiring with cable ties as necessary to reduce strain from the actuator cables. Ensure that cable do not get caught on any moving parts.

## BED SCHEMATIC



## REPLACEMENT PARTS

Location	Item Number	Quantity/ Pack	Description
1	FCE1385001	1	Head Section Actuator
2	FCE1385002	1	Foot Section Actuator
3	FCE1385003	2	Hi-Low Actuator
4	FCE1385005	1	Head Hi-Low Actuator Cord (Short)
5	FCE1385004	1	Foot Hi-Low Actuator Cord (Long)
6	FCE1385006	2	Head/Leg Actuator Cord
7	FCE1385007	1	Control Box
8	FCE1385008	1	Battery Backup
9	FCE1385009	1	Hand Pendant
10	FCE1385010	4	3" Non-Locking Swivel Caster
11	FCE1385011	4	3" Locking Swivel Caster
12	FCE1385012	2	Caster Swivel Lock
13	FCE1385013	1	Replacement Pad for folding Lock
14	FCE1385014	4	Mattress Retainer
15	FCE1385015	1	Head Section Bed Deck
17	FCE1385017	1	Wall Guard
18	FCE1385018	1	Head Section H-Frame
19	FCE1385019	1	Foot Section H-Frame
20	FCE1385020	1	Thigh Section Bed Deck
21	FCE1385021	2	Leg Assembly
22	FCE1385022	2	Elevation Arm
23	FCE1385SPD	1	One-Touch Lock Assembly
25	FCE1385024	1	Foot Section Bed Deck

## REORDER GUIDE

Description	
FCE1232RHFQ02	Traditional Style Head and Footboards, Solar Oak Finish
FCE1232RSR	Standard Assist Rails (Head Section Only)
FCE1232RSRN	Soft-Touch Assist Rails (Head or Foot Section)
FCE1232RSRXT	Extra-Tall Soft-Touch Assist Rails (Head or Foot Section)
FCEQRSIDE	Quick Release Soft-Touch Assist Rails
FCE1232HDW	Mounting Hardware for Head and Footboards
FCE1232ABN	Assist Bar
FCE1232TPZ	Trapeze Adapter Kit
FCE1232EXT	Bed Extension Kit – 84" Length
FCE39KIT	39" Width Extension Kit
FCE42KIT	42" Width Extension Kit
FCE1385038	Staff Control Kit
FCE1385034	5-Function Hand Pendant



# MAINTENANCE

## **⚠️ CAUTION: SERVICE / MAINTENANCE PERSONNEL**

The bed is a heavy piece of equipment. It is strongly recommended that any servicing or maintenance of the bed be performed by two or more personnel.

The Maintenance Schedule on Page 21 of this manual can be copied and used as a procedural guide and documentation.

## **CLEANING AND DISINFECTING THE BED**

1. **WARNING:** Unplug the power cord before cleaning or performing maintenance on the bed.
2. Wipe the bed down with disinfectant and allow the bed to dry completely before use.
3. The bed **MUST** be cleaned and disinfected between patient use or cross-contamination could occur.

## **MECHANICAL INSPECTION AND MAINTENANCE**

1. Inspect all bed components for damage or excessive wear.
2. Visually examine all welds for cracks.
3. Inspect the deck components for any bending, damage or excessive wear.
4. Check the ends of the actuators and mounting hardware for any bending, damage or excessive wear.
5. Inspect all bolts and fasteners for proper functioning (Do not over tighten bolts at pivot points)
6. Check the casters to ensure they are both locking and rolling properly.

## **ELECTRIC INSPECTION AND MAINTENANCE**

1. Inspect all electrical bed components for damage or excessive wear (i.e. broken housings or worn components).
2. Check handset, power and actuator cords for chafing, cuts or excessive wear.
3. Ensure all plugs are fully plugged in and free of damage.
4. Ensure all cords are properly routed with cable ties and free of moving parts.
5. Check all bed functions
  - a. Head raises and lowers properly.
  - b. Foot raises and lowers properly.
  - c. Bed raises and lowers properly.
  - d. Check for malfunctions, recalls, or safety notices.

# MAINTENANCE SCHEDULE – FCE1385B

Serial #	Date	Inspection	Maintenance	Cleaning	Initials	Notes





# WARRANTY INFORMATION

Medline Industries, Inc. warrants to the original user (“Customer”) all products manufactured by Medline Industries, Inc. to be free from defects in material and workmanship under normal use and service. If such a defect appears and Customer has given immediate written notice of same, Medline Industries, Inc. shall replace or repair such part at Medline’s option. Medline Industries, Inc. will require the return of the defective part to establish the claim. Medline’s obligation under this warranty shall be limited to said replacement and/or repair. Installation and freight costs for replaced or repaired items remain the responsibility of the Customer. This warranty does not cover failure due to negligence, accident, deliberate abuse, nor improper installation and/or maintenance. Modifications made to products (including modifications without the expressed written consent of Medline Industries, Inc.) shall void this warranty in its entirety. NO FURTHER WARRANTIES, EXPRESS OR IMPLIED INCLUDING, BUT NOT LIMITED TO WARRANTIES OF MERCHANTABILITY OR FITNESS FOR A PARTICULAR PURPOSE NOT SPECIFIED HEREIN, ARE MADE BY MEDLINE INDUSTRIES, INC. AND ANY FURTHER EXPRESSED OR IMPLIED WARRANTIES ARE DISCLAIMED BY MEDLINE INDUSTRIES, INC. and this warranty sets forth the full extent of the liability arising from the manufacture, use of sale of the products and materials sold hereunder. No allowances will be made for delays or loss of profit, nor for any other special, indirect or consequential damages or injuries, whether based on tort or contract. Applicable warranty periods commencing from date of shipment from Medline Industries, Inc. are as follows:

Electrical Components	5 Years
Frame	15 Years
Welds	Lifetime



**Medline Industries, Inc.**

Three Lakes Drive, Northfield, IL 60093 USA

1-800-MEDLINE (633-5463)  
medline.com | info@medline.com

FOLLOW US



## Medline United States

1-800-MEDLINE (633-5463)

www.medline.com | info@medline.com

## Medline Canada

1-800-396-6996

www.medline.ca | canada@medline.com

## Medline México

01-800-831-0898

www.medlinemexico.com | mexico@medline.com

Some products may not be available for sale in Mexico or Canada. Please contact your Account Representative for additional information.

We reserve the right to correct any errors that may occur within this instruction sheet. ©2020 Medline Industries, Inc. Medline is a registered trademark of Medline Industries, Inc.

