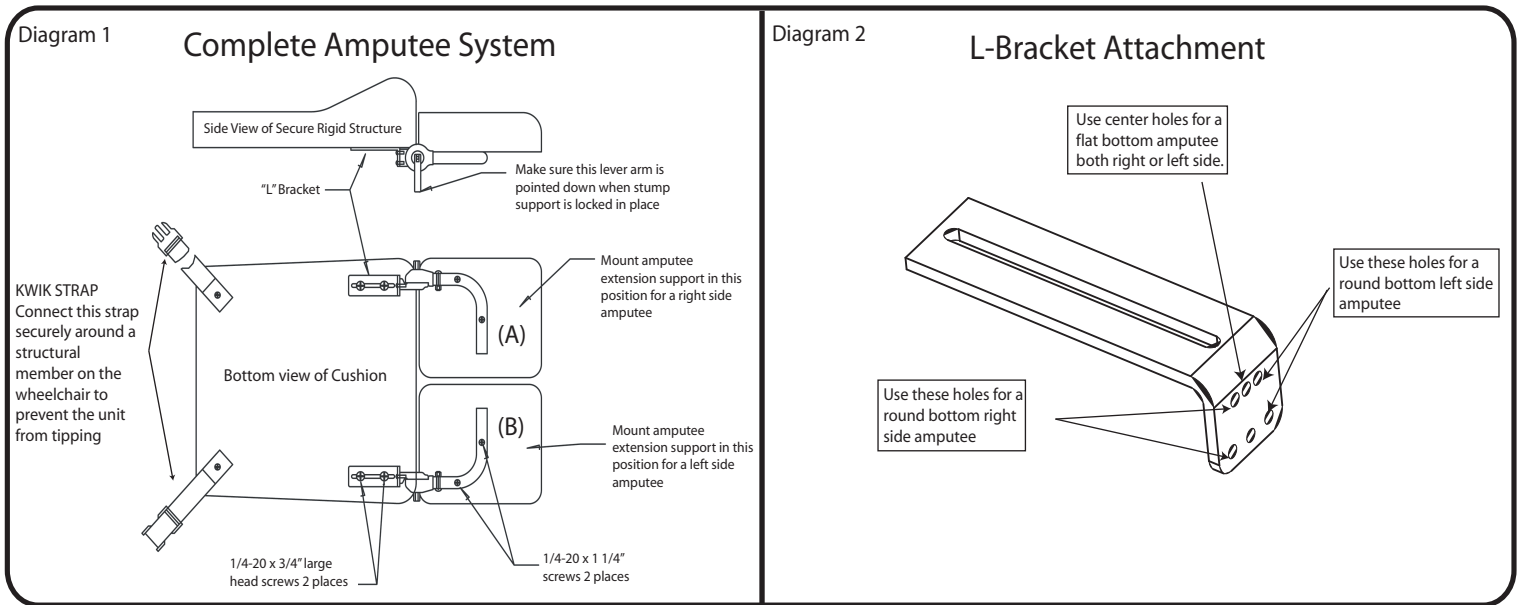




THE COMFORT COMPANY

Quietly making lives more comfortable™

AMP INSTRUCTIONS



Important: Connect the Kwik Strap around the wheelchair frame in such a way to prevent the cushion from tipping forward. The strap may be placed under the seat bars or around the anti-tip bar on the bottom of the wheelchair.

Important: The locking lever rotates 360 degrees when the cam lever is open. Make sure the lever arm is pointed down when the extension support is locked in place.

NOTE: ADJUSTMENT OF THE LOCKING MECHANISM
The locking/rotating extension assembly has been adjusted at the factory prior to shipment. If the unit becomes loose over time, open the cam lever and tighten the nut using a 10mm socket wrench

1 Turn cushion and amputee extension support face down. You should see holes in the fabric on the bottom of the cushion(s) ordered.

2 Mount the locking/rotating extension assembly to the extension support cushion with the long screws (1/4-20 x 1 1/4") provided, as shown in the diagram.

*For right side amputee, mount amputee extension support on the left side of the bottom of the cushion. (A)

*For left side amputee, mount amputee extension support on the right side of the bottom of the cushion. (B)

3 Mount the "L" bracket to the extension assembly using the small screws (10-32 x 1/2"). Use diagram 2 to choose the correct holes for the desired orientation.

*For Quick Release extension make sure teather is facing outside of cushion.

4 Mount the amputee extension support plus assembly to the bottom of the amputee cushion or secure, rigid structure using the large headed screws (1/4-20 x 3/4"). The slot in the "L" bracket allows for front-to-back adjustment.

*See back side of paper for Quick Release installation instructions.