



Maintain resident dignity

Showering in a height-adjustable hygiene chair is a superior alternative to washing in bed when considering hygiene, comfort and dignity. When compared to bed bathing, it is generally accepted that showering is a better cleaning method and also healthier for the resident's skin, as soap is rinsed away more effectively.

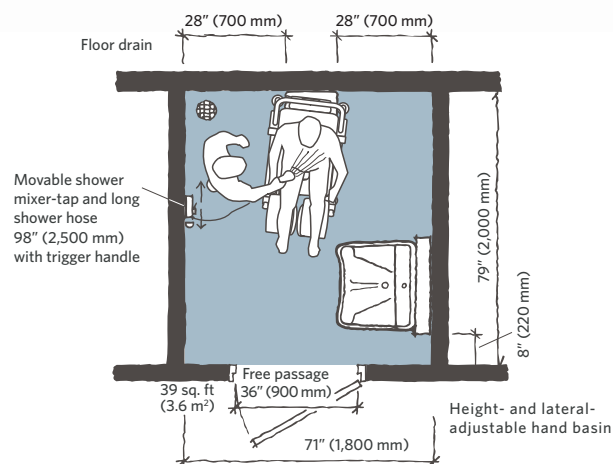
Maintaining personal dignity during assisted hygiene routines is extremely important to residents. The resident's comfort and dignity are enhanced when sitting in a height-adjustable hygiene chair, which enables comfortable recline and good eye contact with the caregiver. Showering in *Carino* ensures more dignified and personal one-to-one care, rather than being managed by the two caregivers often required for washing in bed.

Carino is a versatile aid that can provide an improved alternative for much more than showering. A range of routines including toileting, hair washing and pedicures can all be managed in a more efficient and ergonomically sound way, by a single caregiver.

Carino offers an efficient, safe and ergonomic solution for assisted showering that also ensures resident dignity during closely controlled one-to-one hygiene sessions. Hair washing is made easier and more ergonomic, as the caregiver can avoid strain by adjusting the seat height to the correct working posture.

Product specifications

SPACE REQUIREMENT



Blue area shows the minimum working area required for the staff to be able to use the mechanical aids in an ergonomic way from one side.

MOBILITY GALLERY

Suitable for Barbara and Carl



B Barbara — Can support herself to some degree

C Carl — Sits in a wheelchair with little capacity to support himself

Please contact Arjo for further information on the Mobility Gallery™

PRODUCT INFORMATION

Chassis width	24 5/8" (624 mm)
Chassis length	33 3/4" (857 mm)
Seat lowest position	17 3/4" (450 mm)
Seat highest position	41 3/8" (1,050 mm)
Seat (width)	18 3/8" (475 mm)
Seat (length)	17 2/3" (448 mm)
Weight	93 lbs (42 kg)
Safe working load (SWL)	308 lbs (140 kg)
Approvals	TÜV

ACCESSORIES



Bedpan

Toilet adapter

Seat cushion

Back cushion

¹ Postural Load and Efficiency of Bathing and Showering: Results of a Laboratory Study by Locomotion, 1996.

² The ErgoStat Program, A. Brinkhoff, N.E. Knibbe, Professional Safety, May 2003.

³ Gaining time and reducing physical strain by using height-adjustable hygiene chairs. Corpus study, Holland, 2005.

At Arjo, we are committed to improving the everyday lives of people affected by reduced mobility and age-related health challenges. With products and solutions that ensure ergonomic patient handling, personal hygiene, disinfection, diagnostics, and the effective prevention of pressure injuries and venous thromboembolism, we help professionals across care environments to continually raise the standard of safe and dignified care. Everything we do, we do with people in mind. www.arjo.com



HEIGHT-ADJUSTABLE RECLINING HYGIENE CHAIR

Carino

A better alternative for daily hygiene

For many residents and patients, assisted hygiene routines consist of being showered on a fixed-height shower chair. However, a safer, more efficient alternative is available: showering with dignity using a Carino[®] height-adjustable hygiene chair.

Minimize static load

The risk of static load-related strain and injuries is a major cause of concern for caregivers involved in assisted hygiene routines. Studies have confirmed that caregivers showering residents using a fixed-height chair are subjected to high static load levels.

In fact, when assisting with these sessions, only 30% to 40%¹ of the time is spent working in a sound body position, resulting in a high risk of back injury and pain.

A height-adjustable hygiene chair is the best solution for minimizing static load to protect caregivers' health and safety. Investigations have shown that caregivers spend 75% of their time in sound working positions when using a height-adjustable hygiene chair.² And for experienced users, this figure can be increased further.

Increase efficiency

Showering on a height-adjustable hygiene chair is not only healthier from a static load perspective, it also saves time. Although there is a widespread belief that washing a resident in bed is a quicker method, a study has revealed that showering with a height-adjustable chair can actually be 35% more efficient.³



Benefits for comfort, safety and mobility

Caring in comfort

The resident sits fully supported by the high backrest and head cushion in a reclined position. By utilizing the unit's handset-controlled height adjustability, the caregiver can always work comfortably at the correct working height. Every aspect, from foot-operated swiveling footplates to swing-away leg rests, has been designed in a way that combines optimum resident comfort with sound ergonomics.



Safer by design

Carino, with its unique leg rests, is designed for maximum safety and comfort. It provides a more pleasant experience that has a positive, calming effect on residents. The arched shape of the chair means that the resident is tilted backward more as the seat is raised, giving a reassuring feeling of security. Full integration with Arjo standing and raising aids creates secure solutions for resident transfers, with no need for manual handling by the caregiver.



Promoting mobility

Carino is designed to enable the resident to be more active during the hygiene session, thus stimulating mobility. With the caregiver in close attendance, it offers a safe environment in which residents can participate in showering as much as possible. Colored knobs on the armrest provide a good grip for the resident when moving into position on the seat and pulling forward before standing up.





Easy disinfection

Design features such as flat surfaces, the foldable seat, and detachable leg rest, backrest and head cushion enable easy, efficient cleaning and disinfection routines.



Smooth integration

Carino offers easy integration for efficient toileting routines. Compatibility with our standing and raising aids provides a safe transfer method to and from the toilet.



1 Height adjustability

With handset-controlled height adjustability, the seat height can be altered to ensure a correct working posture for the caregiver and optimum comfort for the resident.



2 Self-adjusting leg rests

Unique, adjustable swing-away leg rests self-adjust in a balanced position for individual resident comfort and support sound ergonomic working routines.



3 Ergonomic maneuvering

The integrated grips and handles enable the caregiver to find an ergonomic grip for any maneuver. Low-friction casters make maneuvering exceptionally smooth.



4 100% availability

While one of the two rechargeable batteries is powering Carino, the other is in the charger, so the hygiene chair is always available for use.



5 Easy access for washing

The open design of the seat enables efficient toileting and provides the caregiver with clear access for discreet washing of the perineal area of the body.