



Domus 4

Alternating Pressure Redistribution System with Low Air Loss

- Suitable for patients with medium to high risk of pressure ulcers
- Ventilated low air loss for patients' upmost comfort
- Cell-on-cell bladder to avoid bottoming out
- Visual and audible alarm enhances patients safety and security



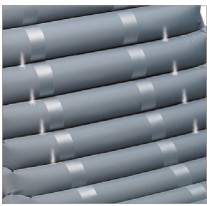
Care for a Healthy Life

APEX

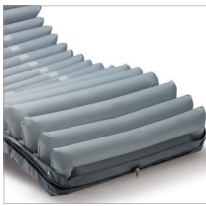


Domus 4

Alternating Pressure Redistribution System with Low Air Loss



Ventilated
Low Air Loss
Wicks moisture away to keep the patient comfortable



Cell-on-Cell Bladder
The bottom cells acts as basic pressure support to avoid bottoming out in case of power failure



Zipper-all-Around Cover
Reduce ingress of unwanted fluid and simply one step to remove for cleaning



CPR Valve
Quickly deflate the mattress during emergencies



Nylon/PU Cover
Vapor permeable and water resistant with basic flame retardant level



Biocompatibility



Vapour Permeable



Water Resistance



Flame Resistance



Quick Connector
Once with cap on, instantly switch to static air mattress for transportation need

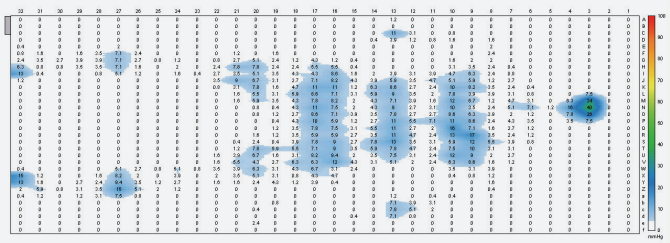


Visual and Audible Alarm

- Low Pressure
- Power Failure
- Tech Support

Pressure Relief During Alternating

Pressure mapping reveals that in alternating mode, bladder A & B take turns to inflate and deflate can significantly relieve the body pressure



5 Modes to Fulfill Individual Needs

- Max Firm
- Alternating
- Continuous Low Pressure (CLP)
- Seat Inflation w/ Alternating
- Seat Inflation w/ CLP



Specification

Model	Domus 4	
Pump	Dimension	11.4" x 7.3" x 5.0" / 29 x 18.5 x 12.6 cm
	Weight	5.1 lb / 2.3 Kg
	Case Material	Flame retardant ABS
Supply Voltage	AC 100-120V 60 Hz, 0.17A	
Operating Cycle	10 mins	
Mattress	Dimension	8" Replacement
	Dimension	78.7" x 35.4" x 8" / 200 x 90 x 20.3 cm
	Cell Height	8" x 20 cells
	Weight	15.2 lb / 6.9 Kg
	Material	Cover: Nylon/PU; Cell: Nylon/TPU; Base: Nylon/PVC
	Maximum Patient Weight	450 lb / 200 Kg
	Flame Retardant Standards	CAL 117
HCPSC code	E0277	

Specifications are subject to change for improvement without notice

Ordering Information (For North America Only)

Model	Domus 4	
System	With Quilted Cover	PD02501
	With Non-Quilted Cover	PD02502
Mattress	With Quilted Cover	PM09403
	With Non-Quilted Cover	PM09404
Pump	PD02001	