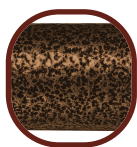


*BED PACKAGES NOW
AVAILABLE WITH
BROWN VEIN RAILS!



BROWN VEIN FINISH
EASY TO MAINTAIN &
LESS INSTITUTIONAL!



**HAND CRANK CAN
BE USED ON TOP OF
NEW UNIVERSAL
HEAD AND FOOT-
BOARDS!**



**NEW UNIVERSAL HEAD AND
FOOT BOARD ARE CRACK
RESISTANT!**

**DUAL PORT
CRANK!**

**NEW
UNIVERSAL STYLE BED END
THAT CAN BE USED AS A
FOOT OR HEAD BOARD!**

Ultra Light, Full Electric Bed

15033	Ultra Light Full Electric Bed, 1/cs
15033-220	Ultra Light Plus Semi-Electric Low Bed, 220V, 1/cs
15033BV-FR	Ultra Light Full Electric Bed with Full Length Side Rails (item #15001A/15001ABV) (Has replaced 15033-FR)
15033BV-HR	Ultra Light Full Electric Bed with Half Rails (item #15002/15201BV) (Has replaced 15033-HR)
15033BV-PKG	Ultra Light Full Electric Bed with Full Length Side Rails (item #15001A/15001ABV) and 80" Inner Spring Mattress (item #15006). (Has replaced 15033-PKG)
15033BV-PKG-T	Ultra Light Full Electric Bed with Full Length Side Rails (item #15001A/15001ABV) and 80" Therapeutic Support Mattress (item #15019) (Has replaced 15033-PKG-T)
15033BV-PKG-1	Ultra Light Full Electric Bed with Half Rails (item #15002/15201BV) and 80" Inner Spring Mattress (item #15006) (Has replaced 15033-PKG-1)
15033BV-PKG-1-T	Ultra Light Full Electric Bed with Half Rails (item #15002/15201BV) and 80" Therapeutic Support Mattress (item #15019) (Has replaced 15033-PKG-1-T)
15033BV-PKG-2	Ultra Light Full Electric Bed with Full Length Side Rails (item #15001A/15001ABV) and 80" Foam Mattress (item #15007) (Has replaced 15033-PKG-2)

FEATURES:

- New universal style head and foot boards are interchangeable and feature high impact composite end panels.
- Height adjustment motor makes it easy for the patient or caregiver to raise or lower the height of the bed.
- Height adjustment motor comes pre-installed on the foot section.
- New crack-proof head and foot board panels.
- The motor can be installed and removed with patient in the bed in seconds without tools.
- In the event of a power failure, a 9 volt battery located in the motor, can lower the head and foot board sections 9 times.
- New and improved hand pendant has large, easy to use controls.
- **Bed ships in two cartons.**
- Channel frame construction provides superior strength and reduced weight.
- Zinc coated spring deck.
- **Bed weighs less than 160 lbs.**
- **Warranty:** (Original purchaser) Lifetime on welds, 5 years on frame, 1 year on all other parts and components.

SPECIFICATIONS

Item #	Bed Height (min)	Bed Height (max)	Overall Length	Overall Width	Product Weight	Carton Shipping Weight	Weight Limit
15033	16"	22"	88"	36"	160 lbs.	175 lbs.	450 lbs.

Important Notice: Item numbers that display an asterisk () reflect an item that will be discontinued or package change.