



Enviro-Glaze[®]

Color Selection



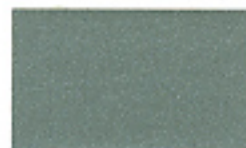
Silver Sage
Patina
EG01



Raindrop
EG06



Pearl White
EG11



Quicksilver
EG02



Onyx
EG07



Solar Flame
EG12



Autumn Bronze
EG03



Textured Onyx
EG08



Alpine Lake
EG13



Yukon Brass
EG04



Textured
Diamond White
EG09



Fairway
Green
EG14



River-Rock
Granite
EG05



Snow White
EG10



Firehouse
Red
EG15

Colorful Stainless Steel Fixtures Will Enhance Any Environment!

Why use Enviro-Glaze®?

Acorn Engineering Company has developed a color coating system which will allow you to purchase the durability of stainless steel fixtures in designer colors. Enviro-Glaze® is a superior finish which gives you a colorful and functional alternate to a stainless steel finish.

What is Enviro-Glaze®?

Enviro-Glaze® is a smooth, hard coating, with various textures, Acorn's Enviro-Glaze® endures impact, will not bubble and is chip-resistant. Enviro-Glaze® is a durable, electrostatically sprayed powder, applied to the outside of the stainless steel fixture then cured at temperatures in excess of 400°F. Vigorous inspection at every step of production assures that each and every fixture meets Acorn's high quality standards.

How to clean and maintain your Enviro-Glaze®?

Acorn's Enviro-Glaze® finishes creates a beautiful surface that is easily cleaned, maintained and kept in a sanitary condition. A solution of warm water and mild soap is all that is necessary for cleaning the unit.*

Available Colors:

Silver Sage Patina

Quicksilver

Autumn Bronze

Yukon Bronze

River-Rock Granite

Raindrop

Onyx

Textured Onyx

Textured Diamond White

Snow White

Pearl White

Solar Flame

Alpine Lake

Fairway Green

Firehouse Red

* Long exposure to ultra-violet rays of the sun may cause chalking; however, should this occur, use of a mild furniture wax will remove residue and restore the original luster.

