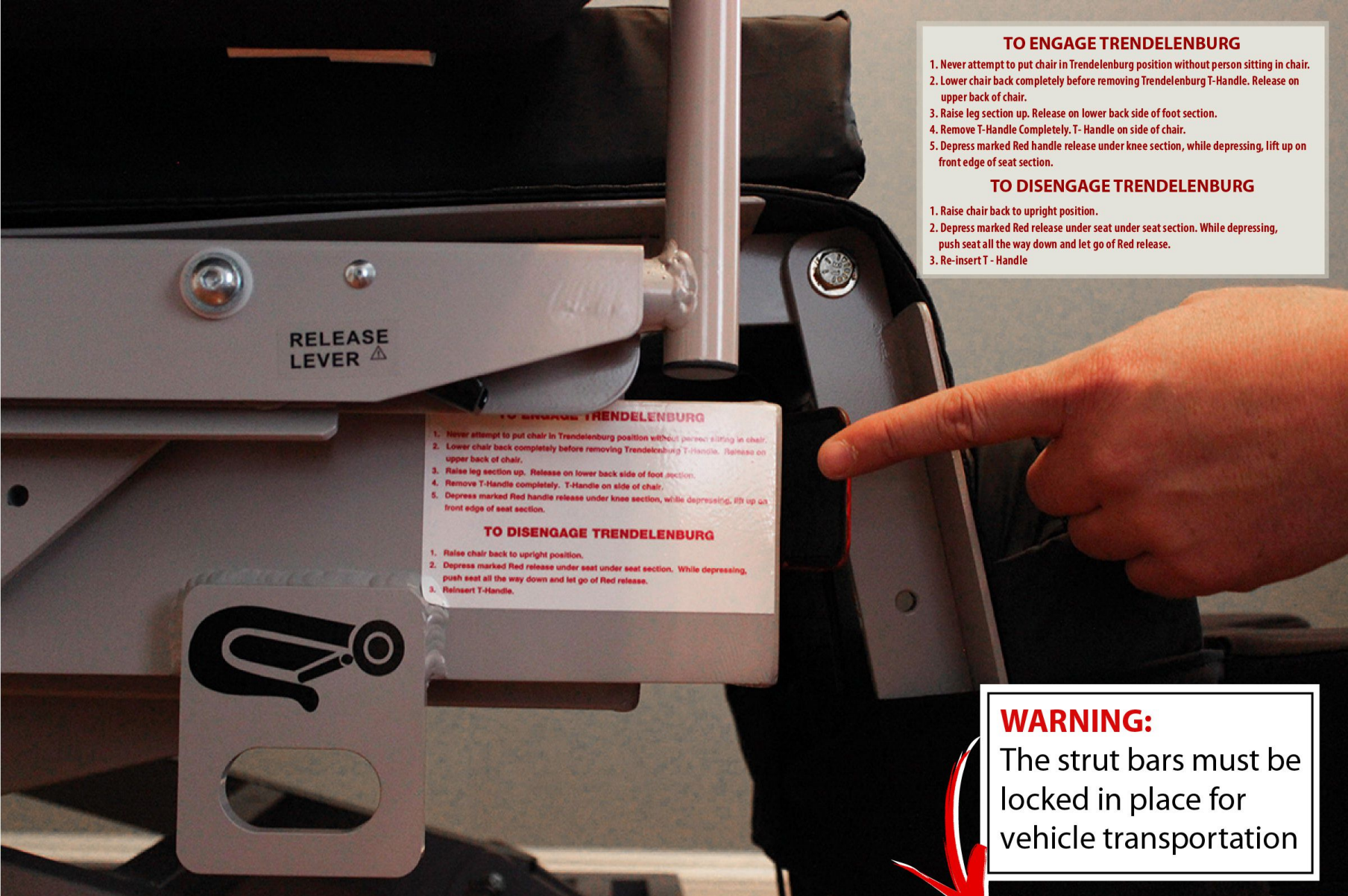




Van tie down brackets (4 total)



TO ENGAGE TRENDELENBURG

1. Never attempt to put chair in Trendelenburg position without person sitting in chair.
2. Lower chair back completely before removing Trendelenburg T-Handle. Release on upper back of chair.
3. Raise leg section up. Release on lower back side of foot section.
4. Remove T-Handle completely. T-Handle on side of chair.
5. Depress marked Red handle release under knee section, while depressing, lift up on front edge of seat section.

TO DISENGAGE TRENDELENBURG

1. Raise chair back to upright position.
2. Depress marked Red release under seat under seat section. While depressing, push seat all the way down and let go of Red release.
3. Re-insert T-Handle

TO ENGAGE TRENDELENBURG

1. Never attempt to put chair in Trendelenburg position without person sitting in chair.
2. Lower chair back completely before removing Trendelenburg T-Handle. Release on upper back of chair.
3. Raise leg section up. Release on lower back side of foot section.
4. Remove T-Handle completely. T-Handle on side of chair.
5. Depress marked Red handle release under knee section, while depressing, lift up on front edge of seat section.

TO DISENGAGE TRENDELENBURG

1. Raise chair back to upright position.
2. Depress marked Red release under seat under seat section. While depressing, push seat all the way down and let go of Red release.
3. Reinsert T-Handle.

WARNING:

The strut bars must be locked in place for vehicle transportation

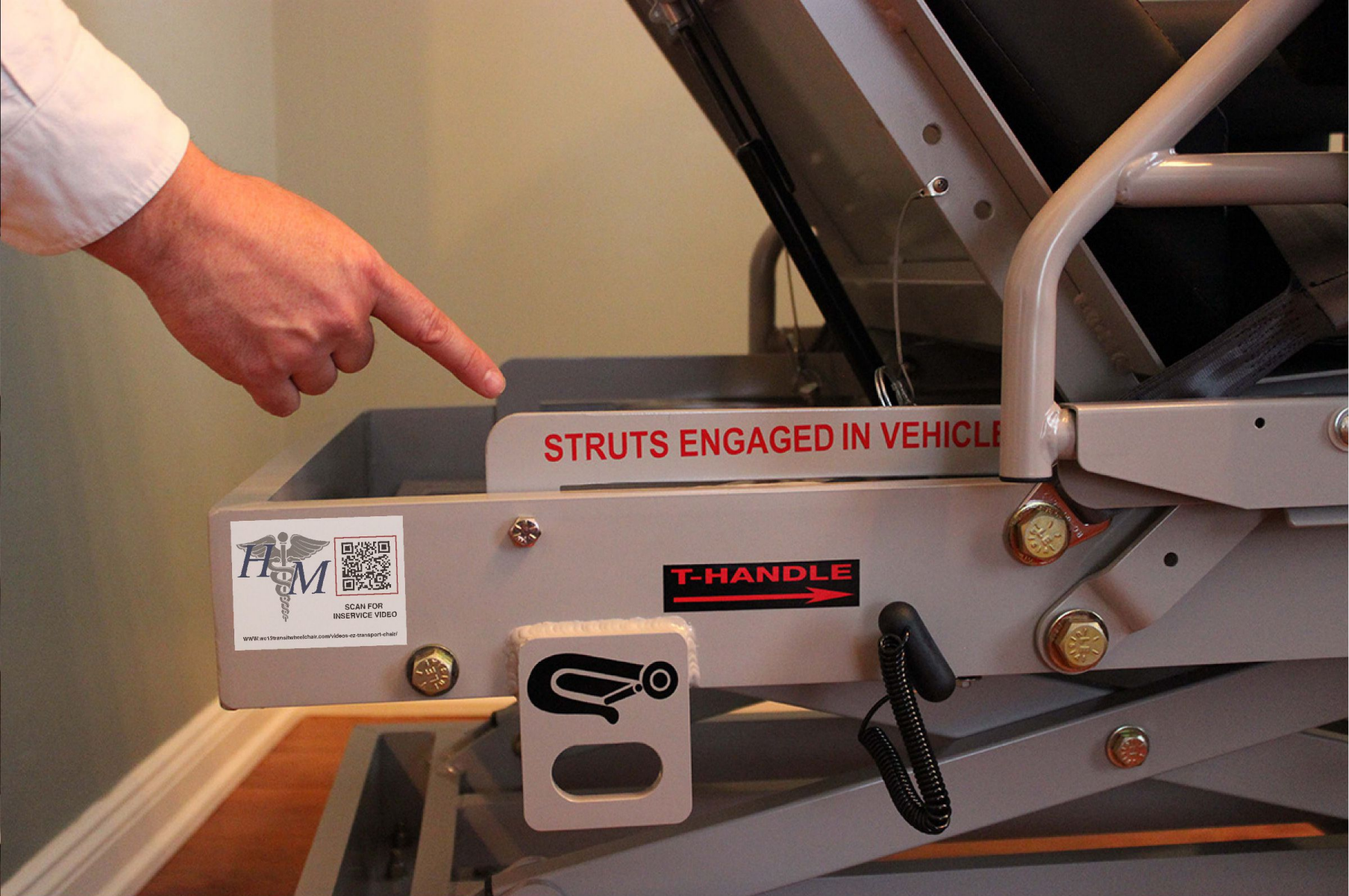
Trendelenburg Instructions Sticker





T - Handle Safety

Lock for Trendelenburg must be removed prior to putting chair in Trendelenburg position



Strut Bars

Must be in locked position when in van
(2 positions available for resident comfort)

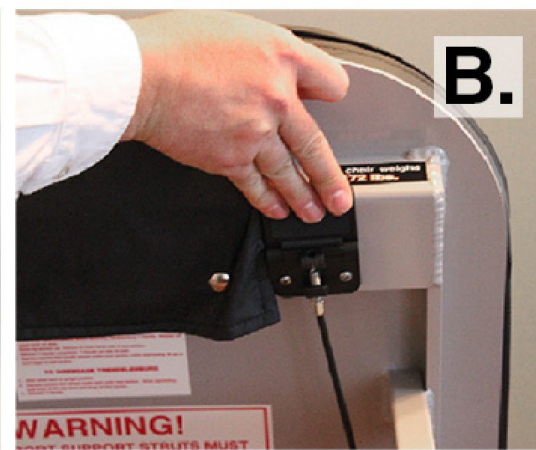


Locking Pins for Strut Bars



Side Rail Release Tab

Place one hand on Release tab and one hand on top of rail while lowering side rail



Lowering Chair Back

- A) Release tab to lower chair back, B) Push in release tab,
C) Push/Pull down while holding release tab,
D) to the selected position

Raising Chair Back - reverse procedure, same as raising leg section

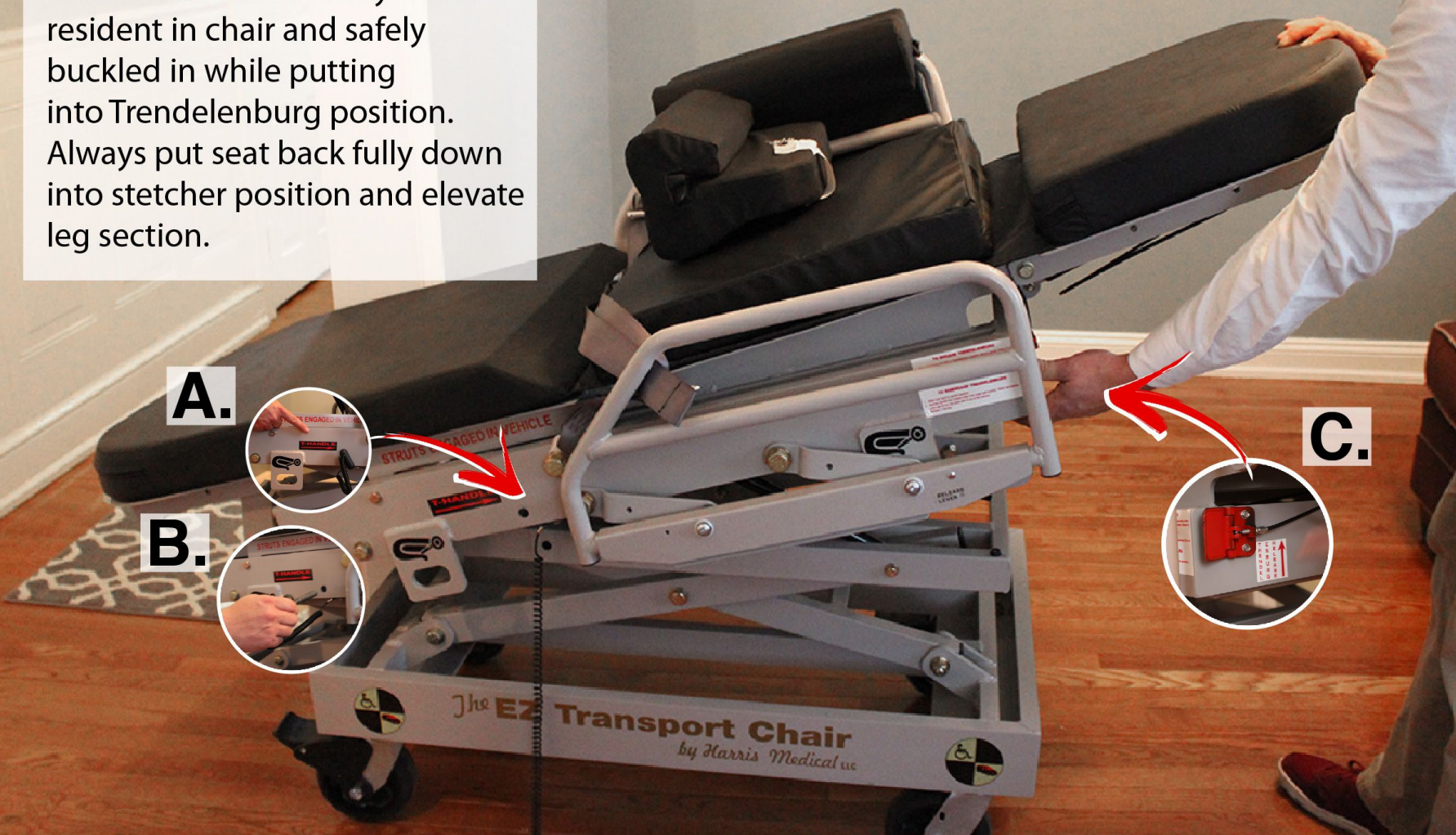


Raising & Lowering Leg Section

- A. While pushing in leg section release tab, B. Pull up or down
C. To final position

IMPORTANT:

Prior to activation always have resident in chair and safely buckled in while putting into Trendelenburg position. Always put seat back fully down into stretcher position and elevate leg section.



To Activate/Deactivate Trendelenburg

A) Locate T-handle, **B)** Pull T-handle all the way out, **C)** Locate Trendelenburg release tab and push in with left hand while pushing/pulling up on elevated leg section to assist proper Trendelenburg position.

To Deactivate - raise seat back fully and engage release tab with left hand while pushing down with right hand until it stops, hold down while releasing tab, replace T - Handle.

TO ENGAGE TRENDELENBURG

- 1. Never attempt to put chair in Trendelenburg position without person sitting in chair.**
- 2. Lower chair back completely before removing Trendelenburg T-Handle. Release on upper back of chair.**
- 3. Raise leg section up. Release on lower back side of foot section.**
- 4. Remove T-Handle Completely. T- Handle on side of chair.**
- 5. Depress marked Red handle release under knee section, while depressing, lift up on front edge of seat section.**

TO DISENGAGE TRENDELENBURG

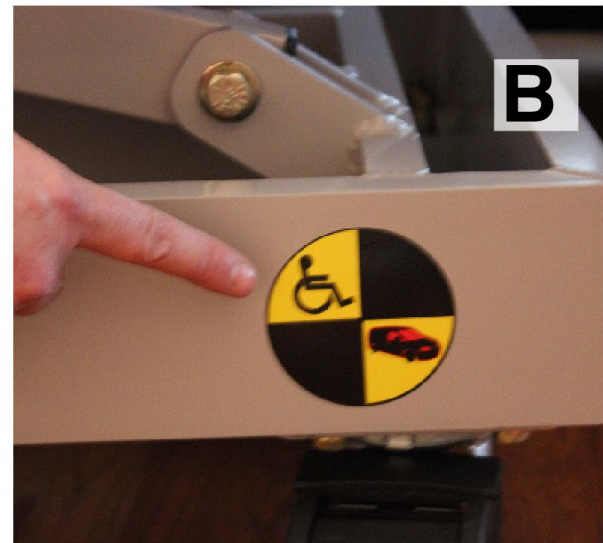
- 1. Raise chair back to upright position.**
- 2. Depress marked Red release under seat under seat section. While depressing, push seat all the way down and let go of Red release.**
- 3. Re-insert T - Handle**

IMPORTANT:

Both seat belt & shoulder belt must be buckled securely on resident while in transport



Location of Shoulder & Seat Belt



- A. T-handle Location
- B. RESNA Certified WC-19 (For transport in a vehicle)
- C. Weight of Chair
- D. EZ Transport Chair Made in USA



A.



C.



D.



B.



E.

A. Upright Position

B. Semi Recline Position

C. Recline - Feet Down

D. Stretcher Position for Transferring to/from Bed & Doctor Exams

E. Trendelenburg Position



A. Leg Abductor

B. Arm in Dialysis Positioning on Arm Pad

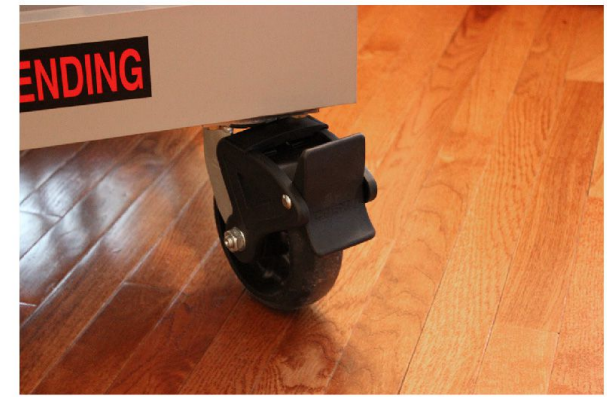


A.



A. Steering Wheel Locks (to lock & unlock)

- 1. Locate lock under Chair**
- 2. To Lock, push lever down**
- 3. Locked position**



Wheel Locks

- To lock push down with toe**
- To unlock push up with toe**