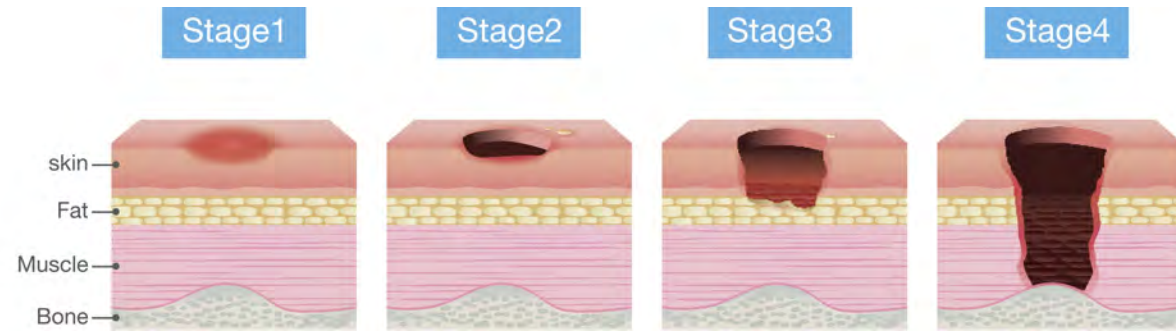


FOAM

Prius Foam Mattresses are a low to high risk system for patients who are at risk of developing stage 1,2 and single site stage 3 pressure ulcers, according to your sound clinical judgment. Prius Foam Mattresses can also be used for patients who have an existing stage 1, 2, 3 and 4 pressure ulcer, in conjunction with your hospitals policy on pressure area management.



| SPECIFICATIONS | VLX | RLX | DLX | ALX |
|-------------------|--|--|--|--|
| Sizes | 36" x 80" x 6.5" 42" x 80" x 6.5" 48" x 80" x 6.5" Custom sizes available | 36" x 80" x 6" 42" x 80" x 6" Custom sizes available | 36" x 80" x 6" Custom sizes available | 36" x 80" x 6" Custom sizes available |
| Raised Side Rails | Available | Available | Available | Available |
| Weight Capacity | 500 lbs | 350 lbs | 350 lbs | 350 lbs |
| Warranty | | | | |
| Foam Core | 7 Year Non-Prorated Limited | 6 Year Non-Prorated Limited | 5 Year Non-Prorated Limited | 3 Year Non-Prorated Limited |
| Cover | 1 Year Material and Workmanship | 1 Year Material and Workmanship | 1 Year Material and Workmanship | 1 Year Material and Workmanship |
| HCPCS Code | E0184 | E0184 | E0184 | E0184 |

Prius Therapeutic Foam Mattresses are made of high density, high resiliently foam. Mattresses are delivered compress packed for lower cost shipping and easy warehouse storage.

Prius Therapeutic Foam Mattresses are tested and meet the Federal Standard for the Flammability of Mattresses 16 CFR part 1632 and 16 CFR part 1633



FOAM MATTRESSES

Provides you, the caregiver, with peace of mind, and your patient with world class care and comfort



VLX

- Tri-layered foam replacement mattress
- Full cold cool visco elastic foam top layer
- Zoned middle layer comfort foam and heel soft foam foot section
- Firm foam support base layer
- Full length firm side rails
- Urethane 4-way stretch top cover
- Vinyl base cover
- Optional raised side rails with ingress/egress cut outs
- Available sizes - 36 x 76, 80, 84 x 6 inches
- Bariatric size available - 42, 48 inch width
- All mattresses available in custom sizes



DLX

- Dual layer foam replacement mattress
- Zoned comfort foam top layer
- Heel soft foam foot section
- Firm foam support base layer
- Nylon top cover
- Vinyl base cover
- Optional raised side rails with ingress/egress cut outs
- Available sizes - 36 x 76, 80, 84 x 6 inches
- All mattresses available in custom sizes



RLX

- Dual layer foam replacement mattress
- Zoned comfort foam top layer
- Visco elastic foam foot section
- Firm foam support base layer
- Full length firm side rails
- Urethane 4-way stretch top cover
- Vinyl base cover
- Optional raised side rails with ingress/egress cut outs
- Available sizes - 36 x 76, 80, 84 x 6 inches
- Bariatric size available - 42 inch width
- All mattresses available in custom sizes



ALX

- Dual layer foam mattress replacement
- Nylon top cover
- Vinyl base cover
- Size - 36 x 80x 6

