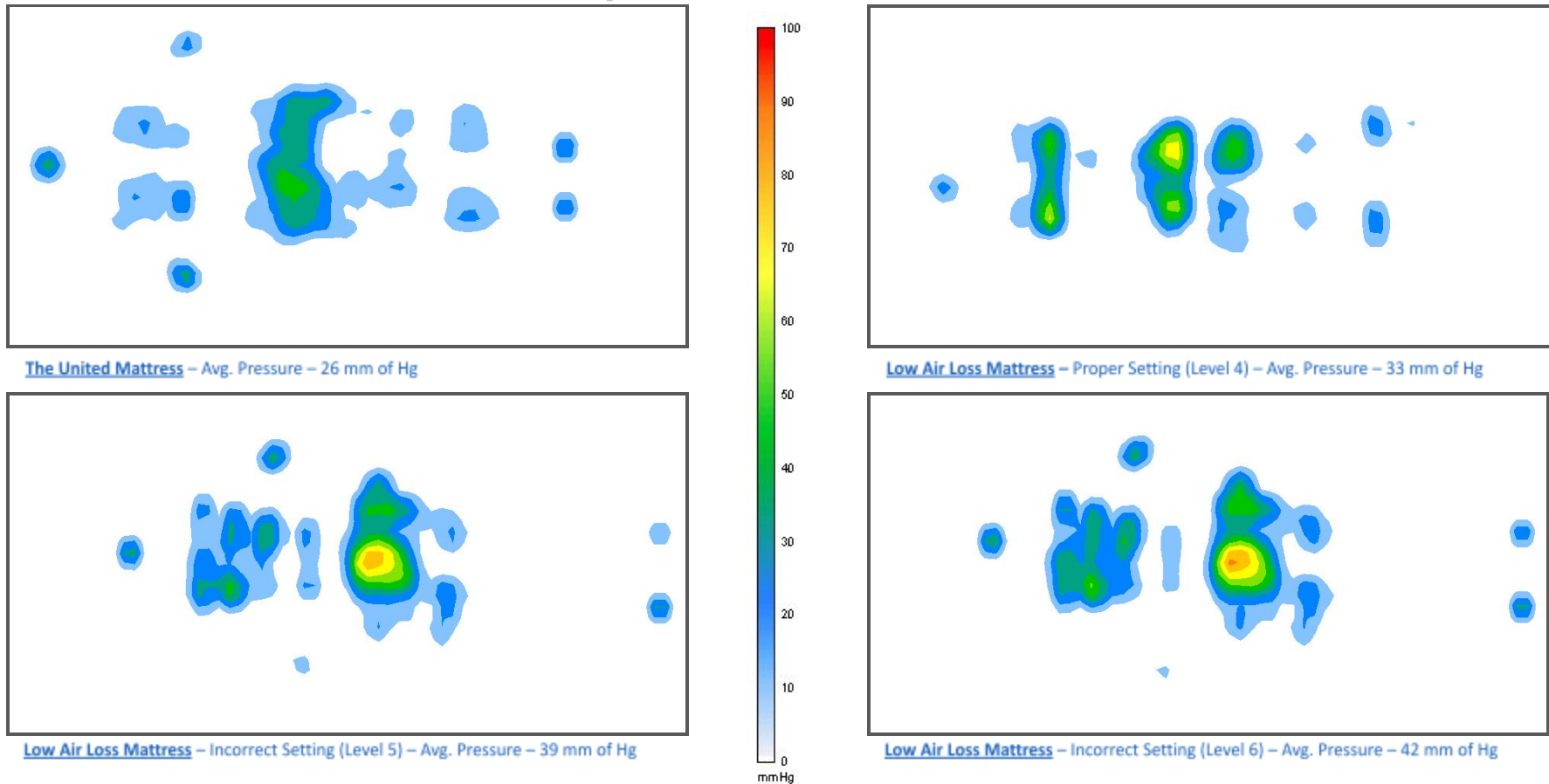


The Foolproof Solution

One of the biggest concerns that we hear from nurses who previously used low air loss mattresses is that it was too easy for someone to adjust the pump to the incorrect setting, causing the mattress to become too firm and pressure injuries to develop.

With The United Mattress, once it is set to the patient's comfort, it does not have to be adjusted, eliminating the possibility of someone pushing a button and harming a patient. The pressure maps below show how easily a patient can be put at risk if his low air loss mattress is adjusted beyond the proper setting. This patient was a 5'3" 113 lb. female.



Superior Pressure Distribution

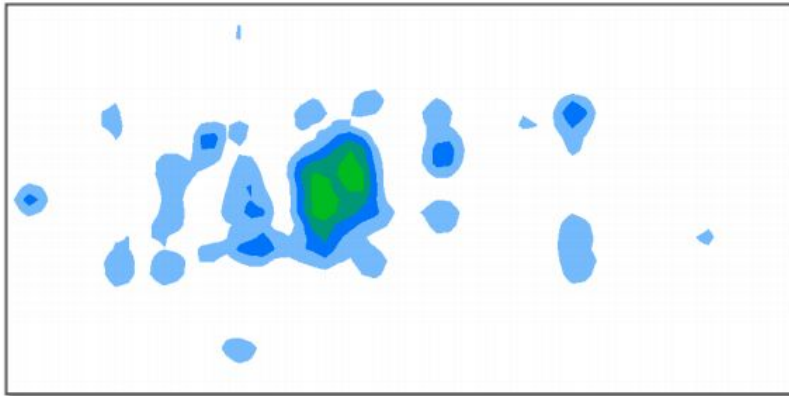
*Pressure mapping provided by Sensor Edge, Inc technology



LAY
FLOAT
HEAL

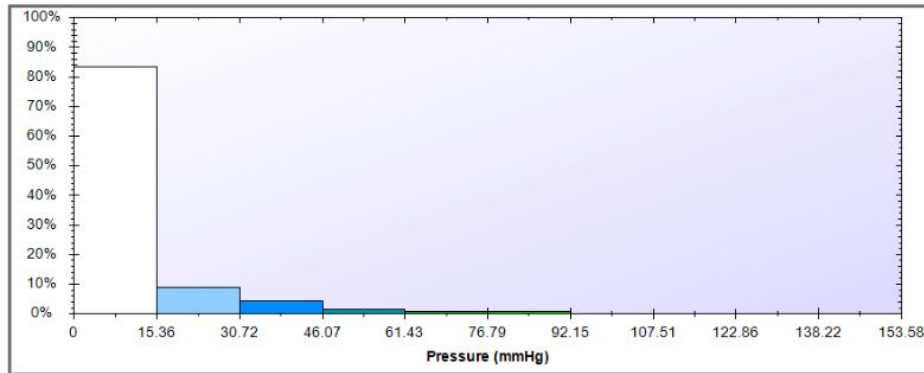
The pressure map below shows how well The United Mattress system distributes a patient's body weight to create an optimal healing environment. This patient maintained an average pressure reading below 26 mm of Hg over his entire body and over 83% of his body was between 0 and 15 mm of Hg.

Pressure Distribution Map



Patient A- Pressure distribution map of a patient (Height- 5'11"; Weight- 192 lbs) on The United Mattress (36" wide x 80" long).

Pressure Distribution Graph



Patient A- Graph shows the percentage of the patient's surface area on the mattress within a given range of pressure.

