



# The GLOSS

Clarke Health Care introduces the lightweight Gloss rollator family. Designed to support users while out and about, the Dolomite Gloss is the ideal rollator to empower independence. Stable and robust, the rollators contain all the core values of the established Dolomite range while encompassing a modern and sleek appearance.

## Frame

Gloss has a welded, lightweight aluminum frame in 4 sizes with a Grey powder-coat finish for minimal maintenance. Weighing less than 15 lbs. Gloss can accommodate clients up to 352 lbs. The cross-folding design offers generous walking space, while forward-facing handles encourage you to walk within the four wheels. This provides stability all around the user. A firm seat offers sitting comfort. For additional safety, the Gloss has built-in audible and visual feedback to accompany the folding and unfolding mechanism, while the blue safety strap secures Gloss in a folded position. When folded Gloss will stand on its own, requiring only 7.4" of floor space.

Choose a Gloss model with the handle range to accommodate the client. Measure from floor to bend of wrist for appropriate handle height. See chart on back for dimensions for each model.

## Standard Features

- Handles easily adjust in 5" range for best posture
- Brake cables are routed along frame to reduce snag possibility
- Easy to use parking and dynamic brakes for safe stopping.
- 8" indoor/outdoor tires for smooth, safe walking on various surfaces.
- Includes backstrap and foldable storage basket

## Warranty

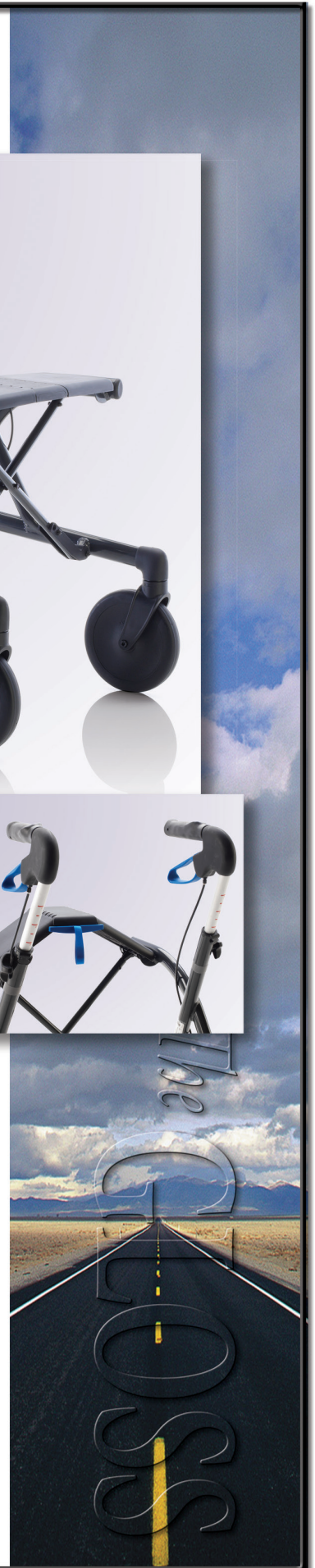
Dolomite provides a two year warranty against manufacturing defects. This excludes grips, cables and tires.



## CLARKE HEALTH CARE PRODUCTS, INC.

7830 Steubenville Pike • Oakdale, PA 15071

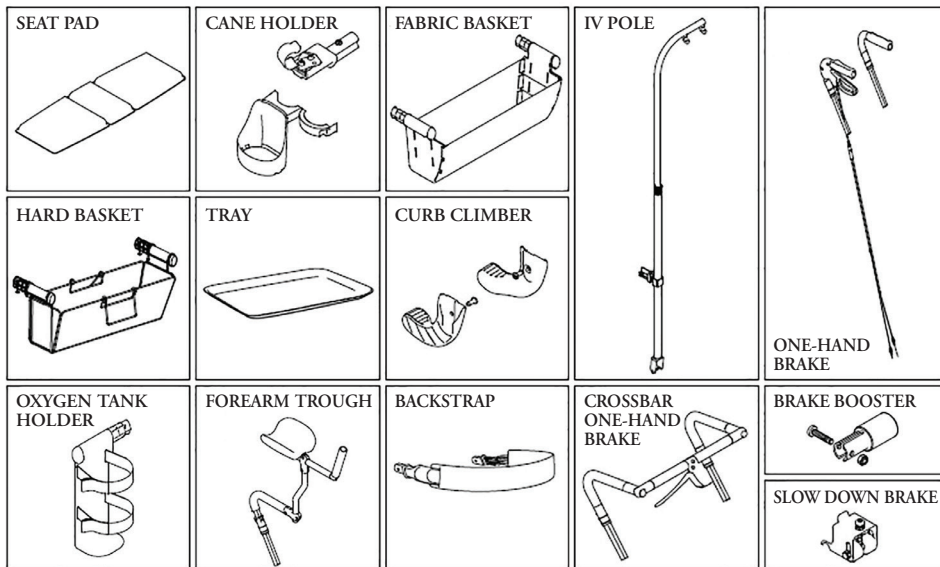
Phone (888) 347-4537 • Fax (724) 695-2922 • [www.clarkehealthcare.com](http://www.clarkehealthcare.com)





# The GLOSS

## Accessories



BASKET



TRAY WITH RAISED EDGES

Accessories personalize the Gloss for each person's unique needs. A Tray with raised edges to carry beverages or food. The Brake Booster provides a greater surface area to push the looped handle. Slow-Down Brakes have a tension control for each wheel to slow rotation and help control rollator. Several One-Hand Brake options can control all braking from one side. An Oxygen Tank Holder will safely support an O2 tank. Cane holder can secure a cane or crutch to the frame. Under Seat Cloth Bag can carry personal items out-of-site.



### SPECIFICATIONS

	450 SUPERLOW	520 LOW	600 STANDARD	680 TALL
Distance Between Rear Wheels	16.5	19.5	19.8	19.5
Min & Max Handle Height	24.7"-30"	28.2"-33.5"	31"-35.8"	35.7"-41"
Seat Dimension, WxH	14.4" x 17.5"	17.3" x 20.2"	17.3" x 23.4"	17.3" x 26.5"
Overall Width and Length	20.2" x 24"	23.2" x 26.3"	23.4" x 28"	23.7" x 30.8"
Folded Width	7.4"	7.4"	7.4"	7.4"
Walker Weight (lbs.)	13	14	14.3	15
Walker Capacity (lbs.)	352	352	352	352
Product Number	D1655083	D1655082	D1655081	D1654807

### CLARKE HEALTH CARE PRODUCTS, INC.

7830 Steubenville Pike • Oakdale, PA 15071  
 Phone (888) 347-4537 • Fax (724) 695-2922 • [www.clarkehealthcare.com](http://www.clarkehealthcare.com)

