



## MONROE BED ELECTRIC HI-LO

**Our home care electric Monroe Beds feature maximum protection for an active child with electrical controls for head, foot and Hi-Lo.**

**4 soft-sided vinyl panels provide window-like protection and an add on top cover can be added for maximum safety.**

### FEATURES INCLUDED

- **Electric Head Elevation to 40 Degrees**
- **Electric Knee elevation to 35 Degrees**
- **Mattress Platform Elevation to 10"**
- **2 Drop Sides**
- **Clear, Soft-Sided Safety Panels on all Sides**
- **7" Innerspring Mattress**
- **5" Heavy Duty Casters**
- **Confetti Epoxy on Bed Frame with Red, Yellow & Blue Laminate Panels**
- **Steel Construction**

### OPTIONS & ACCESSORIES

- **Vinyl Top / Ceiling Cover**
- **Heavy Duty Bumper Pads**
- **IV Pole- Add Up to 4**
- **Oxygen Tank Holder**
- **8" Pressure Reduction Mattress**
- **Custom Colors at no extra charge**



**Shown with standard Red, Yellow & Blue laminate panels and Confetti epoxy.**

**Suggested HCPCS Code:  
E0329- Electric Monroe Bed +  
E0316 / E1399 Safety Top**

# MONROE BED - ELECTRIC HI-LO PRICING AND SPECIFICATIONS

## N1030MP

**Overall Size: 36"x 72"**  
**Mattress Size: 34" x 69"**  
**Overall Bed Height:**  
    **71" Lowest Position**  
    **81" Highest Position**  
**Floor to Top of Mattress Platform:**  
    **19" Lowest Position**  
    **29" Highest Position**  
**Height of Side Rails Above Mattress Platform (Including Safety Panels):**  
    **52" Total**

## N2070MP

**Overall Size: 36"x 83"**  
**Mattress Size: 34" x 80"**  
**Overall Bed Height:**  
    **71" Lowest Position**  
    **81" Highest Position**  
**Floor to Top of Mattress Platform:**  
    **19" Lowest Position**  
    **29" Highest Position**  
**Height of Side Rails Above Mattress Platform (Including Safety Panels):**  
    **52" Total**

## AVAILABLE COLORS



# MONROE BED ACCESSORIES



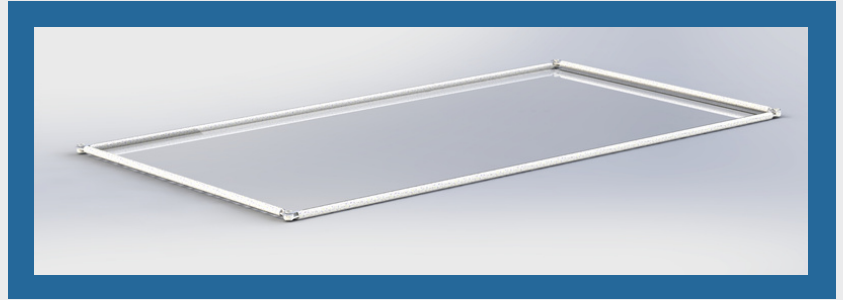
**A convenient Hand Control can be added to allow the caregiver to attend to the person in bed while making adjustments to the head, foot or Hi-Lo at the same time.**



**Our Monroe Beds can accommodate up to 4 IV Poles. They can be mounted on any corner post.**



**Our Oxygen Tank Holder is designed to hang from any side rail in a place best suited for the child's needs, and can accommodate tank sizes D and E.**



**Our optional Vinyl Top Cover is a clear, soft-sided ceiling panel to help keep a child safe in bed while allowing them to see their complete surroundings.**



**Heavy Duty Bumper Pads cover the entire interior of our Stockton Beds providing excellent protection for seizure disorders.**