

# Health Design



POST OP SHOES • ABDOMINAL AND BACK SUPPORT • KNEE BRACES • PROTECTION GEAR • WALKERS • WRIST BRACES





# Health Design

## **Health Design**

A division of DARCO International

Health Design is committed to providing healthcare professionals with high-quality, affordable medical products.

While maintaining an inventory of orthopedic soft goods and footwear products, we also provide competitive OEM and private label services.

<b>PRODUCTS</b>	<b>PAGE</b>
<i>WRIST BRACES</i> .....	4
<i>ARM SLINGS</i> .....	4
<i>KNEE BRACES</i> .....	5
<i>TRACTION AND PROTECTION GEAR</i> .....	6
<i>CAST SHOES</i> .....	7
<i>POST OP SHOES</i> .....	8-9
<i>WALKERS</i> .....	10
<i>DIMENSION GUIDE</i> .....	11



## WRIST BRACES

### BLACK FOAM WRIST SPLINT

This premium wrist splint features a tri laminate material with a white cotton lining, and a brushed nylon exterior. A dorsal aluminum support and a split contoured aluminum palmar stay help immobilize and support the girth changes in the forearm. One adjustable hook and loop fastener strap, and one loop lock strap firmly secure the splint to the wrist. A foam strip provides increased comfort over the palmar stay. Available in black.



BLACK FOAM WRIST SPLINT

SIZE	PALM WIDTH	CAT. NO. (left)	(right)
X-small	2.0" - 2.5"	451-4010-20L	20R
Small	2.5" - 3.0"	451-4010-30L	30R
Medium	3.0" - 3.5"	451-4010-40L	40R
Large	3.5" - 4.0"	451-4010-50L	50R
X-large	4.0" - 4.5"	451-4010-60L	60R

### BUNGEE WRIST SPLINT

The Bungee Wrist Splint has an easy to use bungee strap allowing the wearer to make quick adjustments without assistance. Designed to help provide compression. The hook & loop closure allows for easy adjustment. Removable aluminum palmar spoon with an aluminum dorsal stay. Black exterior with blue interior.



BUNGEE WRIST SPLINT

SIZE	PALM WIDTH	CAT. NO. (left)	(right)
X-small	2.0" - 2.5"	9BW0L	9BW0R
Small	2.5" - 3.0"	9BW1L	9BW1R
Medium	3.0" - 3.5"	9BW2L	9BW2R
Large	3.5" - 4.0"	9BW3L	9BW3R
X-large	4.0" - 4.5"	9BW4L	9BW4R

## ARM SLINGS

### CRADLE SLING ECONOMY

Constructed from one-piece heavy muslin material the Economy Cradle Sling features a slide-buckle shoulder strap adjustment. Available in Beige.

SIZE	ENVELOPE SIZE	CAT. NO.
X-small	4.50" x 12"	422-0025-20
Small	5.50" x 14"	422-0025-30
Medium	6.50" x 16"	422-0025-40
Large	7.00" x 18"	422-0025-50
X-large	7.00" x 18"	422-0025-60*

\*The X-large has a 5" longer shoulder strap.



CRADLE SLING ECONOMY

## **DELUXE THREE-PANEL KNEE IMMOBILIZER**

The Deluxe Three-Panel Knee Immobilizer features 3 aluminum stays located medially, laterally, and posteriorly to provide support and stability. Three-panel universal construction offers custom fitting regardless of size (greatly reducing costly inventory and shelf space requirements). Additional features include hook and loop fastener loop-lock straps with removable adjustment tabs and a popliteal pad.

<i>SIZE</i>	<i>LENGTH</i>	<i>CAT. NO.</i>
Universal	20"	462-0025-10
Universal	22"	462-0026-10
Universal	24"	462-0028-10



DELUXE THREE-PANEL KNEE IMMOBILIZER

## **DELUXE POST-OP KNEE IMMOBILIZER**

Designed for maximum postoperative support and stability, the Deluxe Post-Op Knee Immobilizer is constructed of high density foam and pliable duck with 3 aluminum stays located medially, laterally, and posteriorly. The Immobilizer is x-ray lucent. Pressure sensitive loop-lock closures and removable locking tabs assure proper fit. A bottom fitting foam strip eliminates gap areas.

### **20" DELUXE POST-OP KNEE IMMOBILIZER**

<i>SIZE</i>	<i>THIGH CIRCUM.</i>	<i>CAT. NO.</i>
Small	14"- 16"	462-0014-30
Medium	16"- 18"	462-0014-40
Large	18"- 20"	462-0014-50
X-large	20"- 22"	462-0014-60
XX-large	22"- 24"	462-0014-70

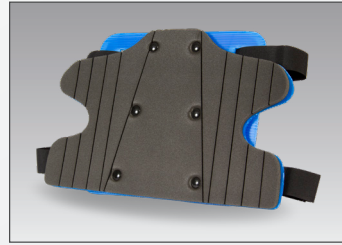


DELUXE POST-OP KNEE IMMOBILIZER

## HED-LOC

Hed-Loc immobilizer for spine board. Long securing straps, reusable, easy to clean.

<b>SIZE</b>	<b>CAT. NO.</b>
Universal	HL-112



HED-LOC

## ADD-A-SPLINT

Fast and effective first responder splint applications. The splints are reusable and economically priced to fit the tightest budgets. Several of the splints are designed for multi-use applications. Easy to apply and remove. Easy to use hook & loop closure no buckles or straps, universal left and right design, X-ray and MRI compatible, suitable for extreme hot or cold temperatures.

<b>SIZE</b>	<b>DESCRIPTION</b>	<b>CAT. NO.</b>
Universal	Complete Kit	AD-100
Universal	Wrist/Lower Arm	AD-101
Universal	Half Arm	AD-102
Universal	Full Arm	AD-103
Universal	Sling/Swathe Immobilizer	AD-104
Universal	Full Leg	AD-105
Universal	Ankle/Elbow	AD-106
Universal	Carrying Case	AD-107



## POLYCAST CAST BOOT

Ideal for use with thinner casting materials such as polyester or fiberglass. Conforms to any casting material. One-buckle closure on each strap. Non-skid outsole. Light weight high top upper.

SIZE	PEDIATRIC	WOMEN	MEN	CAT. NO.
Pediatric	13 - 3	-	-	HD-CB-PC1
X-small	-	3 - 5	-	HD-CB-PC2
Small	-	5.5 - 8	-	HD-CB-PC3
Medium	-	8.5 - 10	6 - 8	HD-CB-PC4
Large	-	-	8.5 - 11	HD-CB-PC5
X-large	-	-	11.5 - 14	HD-CB-PC6



POLYCAST CAST BOOT

## CANVAS / OPEN TOE CAST SHOE

This lightweight cast boot features a sturdy canvas upper. The three layer EVA rocker outsole provides excellent shock absorption. Adjustable heel strap. Open toe and heel.

SIZE	PEDIATRIC	WOMEN	MEN	CAT. NO.
X-small	-	2 - 3	-	HD-CB-CV1
Small	-	3.5 - 5	-	HD-CB-CV2
Medium	-	5.5 - 9.5	7 - 9	HD-CB-CV3
Large	-	10 - 12	9.5 - 12	HD-CB-CV4
X-large	-	-	12.5 - 15	HD-CB-CV5



CANVAS / OPEN TOE CAST SHOE

## VINYL CLOSED TOE CAST BOOT

The choice for inclement weather. This boot provides both closed toe and heel with a moisture resistant vinyl upper. Three layer EVA rocker outsole. Excellent shock absorption.

SIZE	PEDIATRIC	WOMEN	MEN	CAT. NO.
X-small	-	2 - 3	-	HD-CB-VN1
Small	-	3.5 - 5	-	HD-CB-VN2
Medium	-	5.5 - 9.5	7 - 9	HD-CB-VN3
Large	-	10 - 12	9.5 - 12	HD-CB-VN4
X-large	-	-	12.5 - 15	HD-CB-VN5



VINYL CLOSED TOE CAST BOOT

**CLASSIC POST OP SHOE**

This popular post op shoe provides quality care at an outstanding value. The semi-rigid outsole provides stability and minimizes flexure. Semi-rigid outsole provides medial/lateral stability. Breathable nylon mesh upper. Simple, one buckle closure on each strap.

SIZE	PEDIATRIC	WOMEN	MEN	CAT. NO.
Pediatric	10 - 1	-	-	HD-PO-CL1
WS	-	4 - 6	-	HD-PO-CL2
WM	-	6.5 - 8	-	HD-PO-CL3
WL	-	8.5 - 10	-	HD-PO-CL4
MS	-	-	6 - 8	HD-PO-CL5
MM	-	-	8.5 - 10	HD-PO-CL6
ML	-	-	10.5 - 12	HD-PO-CL7
MXL	-	-	12.5 - 14	HD-PO-CL8
MXXL	-	-	14.5 - 16.5	HD-PO-CL9



CLASSIC POST OP SHOE

**EZY CLOSE**

The EZY Close post op shoe's flap-on-flap closure provides a secure fit and can accommodate even the bulkiest of dressing. Perfect for older patients with limited hand dexterity.

SIZE	PEDIATRIC	WOMEN	MEN	CAT. NO.
Pediatric	10 - 1	-	-	HD-PO-EZ1
WS	-	4 - 6	-	HD-PO-EZ2
WM	-	6.5 - 8	-	HD-PO-EZ3
WL	-	8.5 - 10	-	HD-PO-EZ4
MS	-	-	6 - 8	HD-PO-EZ5
MM	-	-	8.5 - 10	HD-PO-EZ6
ML	-	-	10.5 - 12	HD-PO-EZ7
MXL	-	-	12.5 - 14	HD-PO-EZ8



EZY CLOSE



**SOFT TOUCH POST OP SHOE**

This economically priced semi-rigid post op shoe is ideal for the sensitive foot. A soft cotton-poly blend breathable upper will keep your patient both cool and comfortable. The hook and loop closure provides even tension and compression. The reinforced heel counter provides additional comfort and support for your patient. The black TPR outsole is flared in the heel area to provide better medial/lateral stability. The outsole has the famous Health Design notch to give it a more shoe-like profile. Ideal for use following surgery, as well as for post trauma, dislocations, burns and the foot sensitive patient.



SOFT TOUCH POST OP SHOE

SIZE	PEDIATRIC	WOMEN	MEN	CAT. NO.
Pediatric	10 - 1	-	-	HD-PO-ST1
WS	-	4 - 6	-	HD-PO-ST2
WM	-	6.5 - 8	-	HD-PO-ST3
WL	-	8.5 - 10	-	HD-PO-ST4
MS	-	-	6 - 8	HD-PO-ST5
MM	-	-	8.5 - 10	HD-PO-ST6
ML	-	-	10.5 - 12	HD-PO-ST7
MXL	-	-	12.5 - 14	HD-PO-ST8

**FOREFOOT RELIEVER**

Designed for forefoot relief and healing. This shoe has a unique wedge outsole and a soft nylon upper. We also added the hi-top upper to keep the foot held back and reduce slippage. Available in five sizes XS - XL.



FOREFOOT RELIEVER

SIZE	PEDIATRIC	WOMEN	MEN	CAT. NO.
X-small	-	3 - 5.5	-	HD-PO-FR1
Small	-	6 - 8.5	-	HD-PO-FR2
Medium	-	9 - 11.5	7 - 9.5	HD-PO-FR3
Large	-	-	10 - 12.5	HD-PO-FR4
X-large	-	-	13 - 15	HD-PO-FR5

## HD WALKER

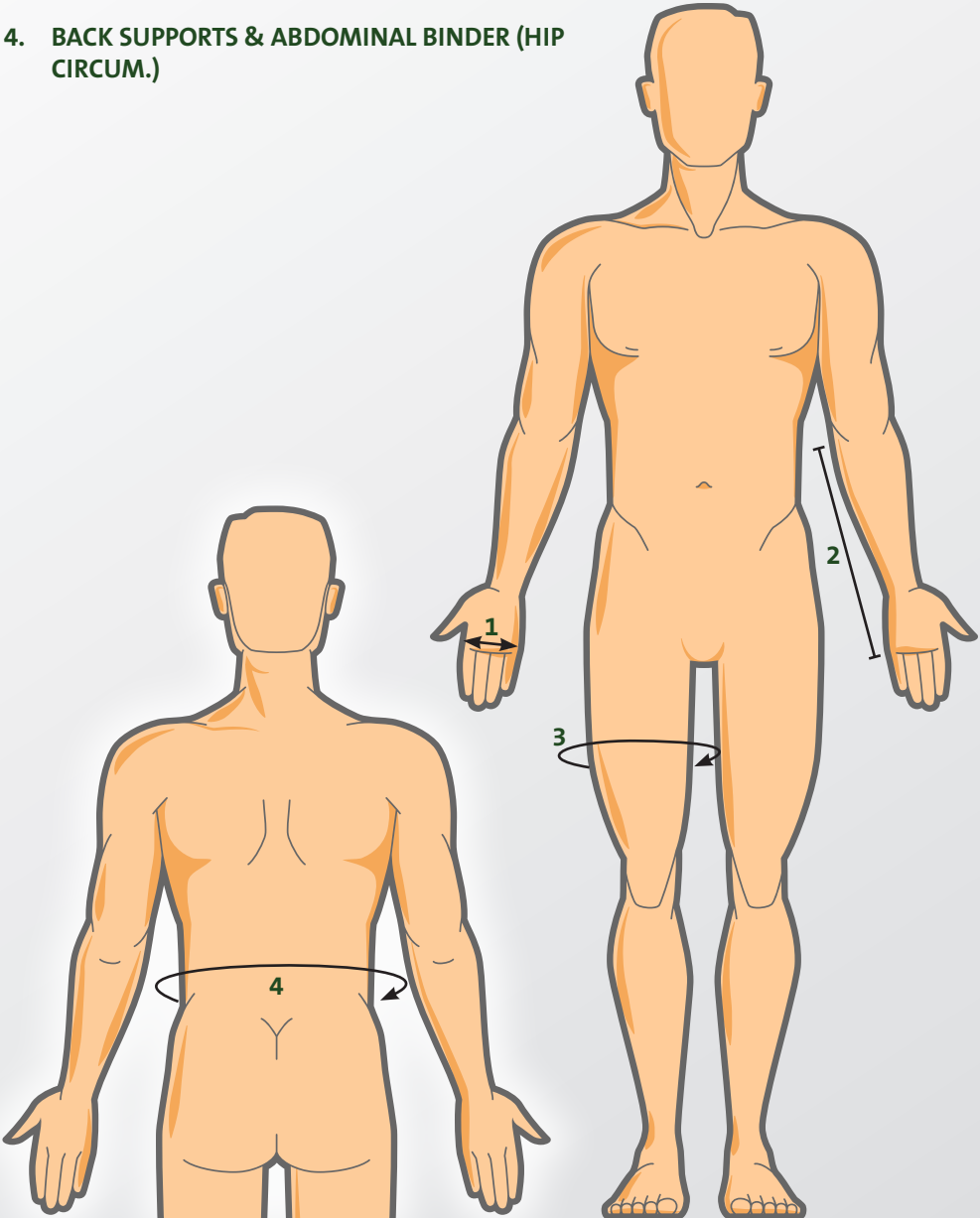
This cost effective walker features a non-skid rocker outsole with a cushioned EVA innersole. The low profile design helps to minimize leg length discrepancy. The hook & loop closures with D-rings makes strapping quick and easy. Metal uprights are malleable and formed to accommodate swollen ankles and bulky bandaging. Designed for easy application and patient comfort. The HD walker is offered in two convenient styles Tall and Low.

SIZE	WOMEN	MEN	CAT. NO. LOW	CAT. NO. TALL
X-small	4 - 5.5	-	HD-LWS-MM0	HD-LWL-MM0
Small	6 - 8.0	4.5 - 7	HD-LWS-MM1	HD-LWL-MM1
Med.	8.5 - 11.5	7.5 - 10.5	HD-LWS-MM2	HD-LWL-MM2
Large	12 - 13.5	11 - 12.5	HD-LWS-MM3	HD-LWL-MM3
X-large	-	13 - 15	HD-LWS-MM4	HD-LWL-MM4



HD WALKER

1. WRIST SUPPORT (PALM WIDTH)
2. ARM SLING (FOREARM LENGTH IS ENVELOPE SIZE)
3. KNEE BRACES (THIGH CIRCUM.)
4. BACK SUPPORTS & ABDOMINAL BINDER (HIP CIRCUM.)



Health Design



HD-CAT-21\_Rev1021