

## ENHANCED MOBILITY AND FREEDOM FOR MEMORY CARE

Ergonomically designed, the Mobility Rocker 500 MR enables patients to self propel with their hands or feet and gently rock-increasing mobility and independence.



- 1 INFINITELY ADJUSTABLE SEAT TILT
- 2 CAREGIVER-ACTIVATED ROCKING
- 3 ADJUSTABLE ROCKING TENSION
- 4 HEIGHT ADJUSTABLE ARMRESTS
- 5 ADJUSTABLE SEAT TO FLOOR HEIGHT
- 6 REMOVABLE WINGS FOR UPPER LATERAL SUPPORT (OPTIONAL)

### PATIENT BENEFITS



Rocking motion helps calm agitation and absorb rigid movements, creating a soothing effect.



Posterior tilt improves posture, redistributes pressure and aids in fall prevention (seat tilt of 33° shown).



Front pivot seat tilt enhances visual orientation and encourages self-mobility. Footrests can be removed to enable foot on floor propulsion while tilted.



Optional rear mount mag wheels accommodate various patient mobility needs.

### CAREGIVER AND FACILITY BENEFITS

- Provides supportive stable positioning.
- Aids in the maintenance of skin integrity.
- Tilt provides ease of use for frequent repositioning.
- Design provides safety and stability helping to reduce risk of injury.
- Provides stimulation and contentment - excellent for memory care.

## COMFORT TENSION SEATING® PROVIDES

- Long term seating comfort
- Conforming support for proper pelvic positioning
- Improved air flow, decreasing heat and moisture build up
- Pressure redistribution that aids in maintaining skin integrity
- Accommodation for conditions such as kyphosis and lordosis



CTS Strapping flexes for individualized fit & superior comfort.

## SPECIFICATIONS

Frame	16 Gauge tubular steel frame
Seat & Backrest	BRODA Comfort Tension Seating®
Degrees of Tilt	up to 33°
Standard Seat Width	16", 18" (40cm, 45cm)
Custom Seat Width	20" (50cm), 22" (55cm)
Standard Seat Depth	17", 18.5" (43cm, 46cm)
Custom Seat Depth	15.5", 20" (39cm, 50cm)
Seat Height	Adjustable 14" to 19" (35cm-48cm)
Rear Casters	5" total lock (Mounted on front with rear mag wheels)
Mag Wheels	20" Front mount standard (rear mount optional) (50cm) 22" (55cm) upgrade available
Weight Capacity	250 lbs. (114 kg)
Standard Padding	Lower side pads, seat and back pad with cover
Footrest	Swing away footrests

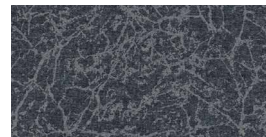
## UPHOLSTERY OPTIONS



INTERLACE  
ESPRESSO



RENAISSANCE  
BURGUNDY



RENAISSANCE  
CHARCOAL



SILVERTEX  
SAPPHIRE BLUE

## FRAME OPTIONS



GREY  
HAMMER



BLACK

## COMMON ACCESSORIES

- Elevating swing away legrest
- Solid or clear tray
- Padded tray cover
- Aluminum front casters (Available with rear mag wheels only)
- Padded armrests
- O2 Holder
- IV Pole
- Half tray
- Thigh belt
- Full wrap vinyl seat and back covers
- BRODA app (additional positioning package)