







Leckey Freestander CE

Name	
Date:	
Email	
Contact Number	
Invoice Address	
Delivery Address	

Quote Order

Purchase Order	
----------------	--

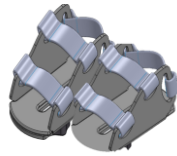


	Item Code	Description	Quantity	Price
Frame				
				
<input type="checkbox"/>	LFS/1-MW	Freestander Size 1 (complete) - Meadow		XXX
<input type="checkbox"/>	LFS/2-MB	Freestander Size 2 (complete) - Mondeo Blue		XXX
<input type="checkbox"/>	LFS/3-MB	Freestander Size 3 (complete) - Mondeo Blue		XXX
Pelvic Band				
				
<input type="checkbox"/>	LFS/1/B-MW	Freestander Pelvic Band - size 1 - Meadow		XXX
<input type="checkbox"/>	LFS/2/B-MB	Freestander Pelvic Band - size 2 - Mondeo Blue		XXX
<input type="checkbox"/>	LFS/3/B-MB	Freestander Pelvic Band - size 3 - Mondeo Blue		XXX
<input type="checkbox"/>	LPS/1/B-MW	Pronestander Pelvic Band - size 1 - Meadow		XXX
<input type="checkbox"/>	LPS/2/B-MB	Pronestander Pelvic Band - size 2 - Mondeo Blue		XXX
<input type="checkbox"/>	LPS/3/B-MB	Pronestander Pelvic Band - size 3 - Mondeo Blue		XXX
Solid Pelvic Plate				
				
<input type="checkbox"/>	LFS/1/L-MW	Freestander Solid Pelvic Plate - size 1 - Meadow		XXX
<input type="checkbox"/>	LFS/2/L-MB	Freestander Solid Pelvic Plate - size 2 - Mondeo Blue		XXX
<input type="checkbox"/>	LFS/3/L-MB	Freestander Solid Pelvic Plate - size 3 - Mondeo Blue		XXX
Soft Knees				
				
<input type="checkbox"/>	LPS/1/K-MW	Freestander/Pronestander Upholstered Kneecups - size 1 - Meadow		XXX
<input type="checkbox"/>	LPS/2/K-MB	Freestander/Pronestander Upholstered Kneecups - size 2 - Mondeo Blue		XXX
<input type="checkbox"/>	LPS/3/K-MB	Freestander/Pronestander Upholstered Kneecups - size 3 - Mondeo Blue		XXX
<input type="checkbox"/>	LPS/4/K-MB	Freestander/Pronestander Upholstered Kneecups - size 4 - Mondeo Blue		XXX

Foot Supports



Sandals



Open-back sandals



Booties



Ankle Huggers



Ankle Wraps

<input type="checkbox"/>	152-1600	Sandals Size 1		XXX
<input type="checkbox"/>	152-2600	Sandals Size 2		XXX
<input type="checkbox"/>	152-3600	Sandals Size 3		XXX
<input type="checkbox"/>	LHZ/1/100	Size 1 open-back sandals		XXX
<input type="checkbox"/>	LHZ/2/100	Size 2 open-back sandals		XXX
<input type="checkbox"/>	LHZ/3/100	Size 3 open-back sandals		XXX
<input type="checkbox"/>	150-1852	Extra Small Booties		XXX
<input type="checkbox"/>	AH01	Ankle Huggers		XXX
<input type="checkbox"/>	173-2305	Small Ankle Wraps (use with sandals)		XXX
<input type="checkbox"/>	173-3305	Large Ankle Wraps (use with sandals)		XXX
<input type="checkbox"/>	117-787	1Inch Footplate Raiser for Split Footplate		XXX

Technical Specifications

Specification	Size 1	Size 2	Size 3
Age (approximate)	1 - 5 years	4 - 10 years	9 - 18 years
User Body Height (Min / Max)	800 mm / 1151 mm	1100 mm / 1448 mm	1400 mm / 1849 mm
Maximum User Weight	60 kgs	80 kgs	90 kgs
Chest Pad Height (Min / Max)	470 mm / 680 mm	680 mm / 975 mm	975 mm / 1350 mm
Width Between Chest Supports (Min / Max)	152 mm / 254 mm	203 mm / 305 mm	254 mm / 356 mm
Activity Tray	400 mm x 505 mm	450 mm x 575 mm	500 mm x 625 mm