

New Step System Quick Installation Guide

Thank you for purchasing from National Ramp! This quick installation guide will cover how to install the new step system.

Tools Required:

- Impact Driver
- Drill
- 3/8" socket
- 7/16" socket and/or wrench
- 9/16" socket
- 3/16" allen bit/wrench
- ¼" drill bit
- Level
- Pipe cutter/hacksaw/table saw (if cutting is required)
- Sanding/Filing tool (to remove burs and sharp edges after cutting)

Instructions:

1. Insert two legs up through the leg receivers on the step assembly. Leg length will be dependent on rise of platform. Legs should extend above platform 12-18”.



2. Assemble two universal bracket assemblies, each assembly consisting of:
 - One 3” universal bracket
 - Two 3/8”-16 x 1.25” hex head bolts

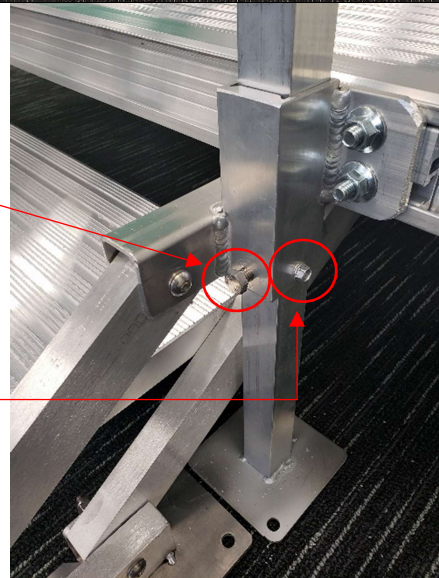
Insert them into the platform side channel



3. Attach step assembly from step 1 to the platform – Line up the universal bracket assemblies from step 2 with the brackets on the leg receiver on the step assembly. Steps should be centered.



4. Ensure the legs inserted into the step assembly in step 1 is firmly grounded and lock the leg with a 3/8"-16 x 3/4" set bolt and 1/4"-14 x 1" drilling screw in predrilled/tapped holes.

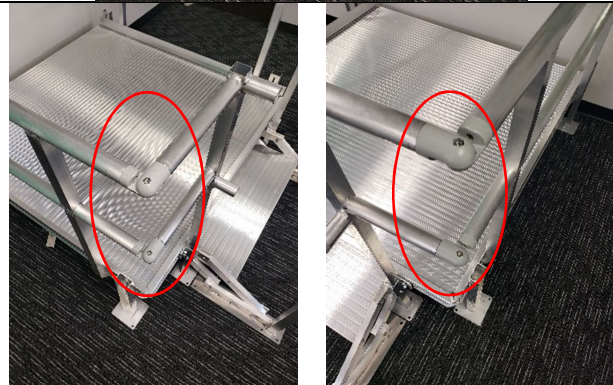


5. Insert left and right step top posts over legs (from step 1).

Note the longer rails from the top posts should point to the platform handrails and the shorter rails should point towards the steps.



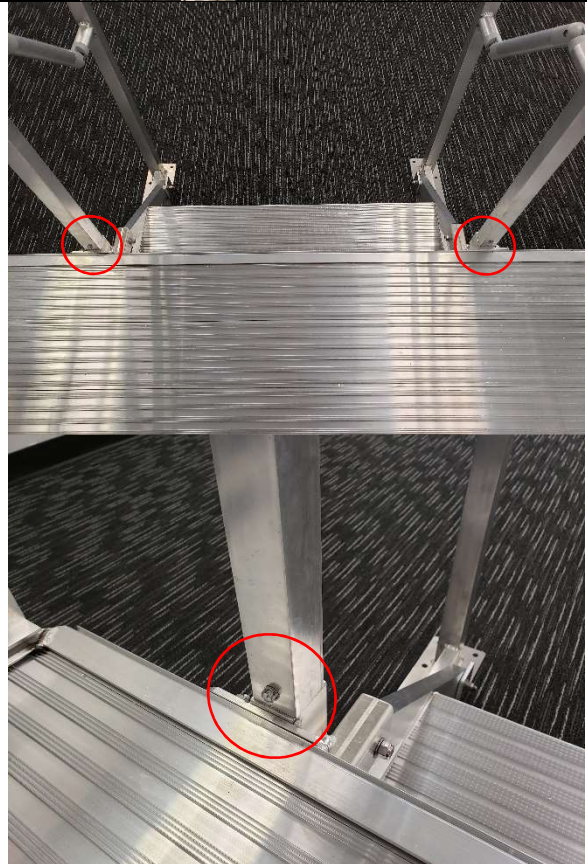
6. Join upper and lower platform handrails with upper and lower rails from step top posts using elbows. Cutting is required. Make sure to remove any sharp edges after cutting.



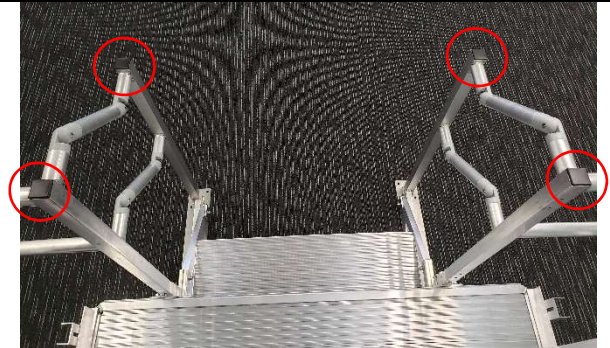
7. Measure and cut round tubes for step handrails. Make sure to remove any sharp edges after cutting. Join the cut handrails to the step upper and lower posts with elbows. There will be a total of 4 step handrails (two per side).



8. Fasten step left and right top posts to legs with ¼"-14 x 1" drilling screws.



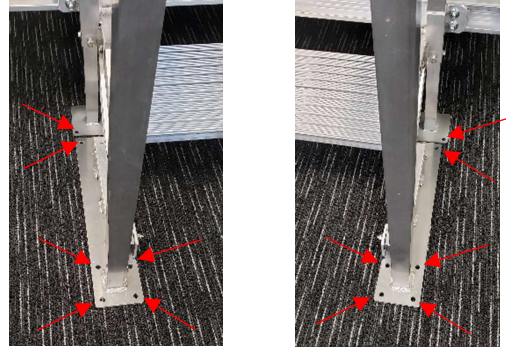
9. Insert four plastic black square caps to top of step upper and lower posts.



10. Anchor left and right step base and legs plates to ground. Total of 12 anchors; 6 per side.

Step installation is complete!

Continue to step 11 if you are installing a gate.



11. The next steps will cover installing a gate to the step system.

Assemble the gate hinges to the gate and test fit against step upper post. Gate can be installed on either left or right step upper posts.

Mark and drill lower gate bracket first.



12. Fasten each gate bracket to step upper post using:

- Two ¼"-20 x 2" hex head bolts
- Four ¼" washers
- Two ¼"-20 acorn nuts



(platform side)

(step side)

Repeat for upper gate bracket.



13. Insert plastic black square cap to top of gate square tube on latch side.

Test gate and latch functionality.

Gate install complete!

