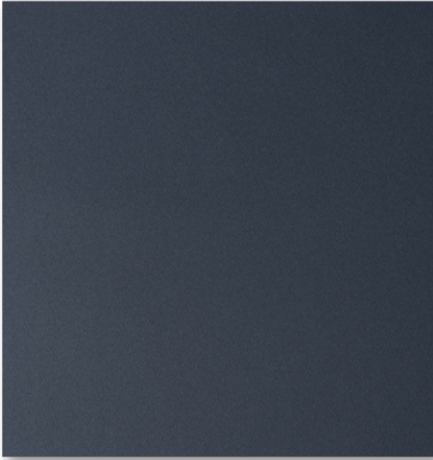




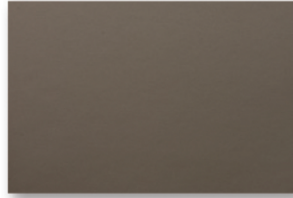
*Lumex Health Care Seating  
High Performance Fabric Collection*

*published* **November 2022**

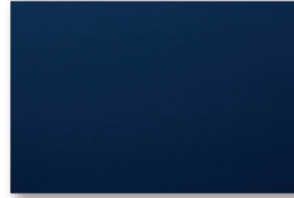
**GUARDIAN** eco*sense*  
BY SPRADLING



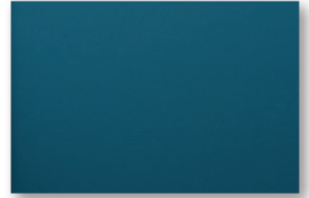
GUA-1325  
ARMOR



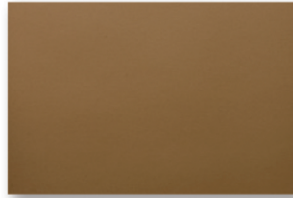
GUA-1305  
CONVOY



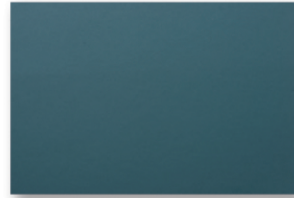
GUA-1323  
MOAT



GUA-1319  
SIREN



GUA-1311  
FENCE



GUA-1318  
STEEL



GUA-1304  
LATCH

**SAVOY** eco*sense*  
BY SPRADLING



SAV-9517  
EUCALYPTUS



SAV-9524  
BLACK



SAV-401  
VINTAGE GOLD



SAV-409  
WARM TAUPE



SAV-9516  
INDIGO

**CASSARA** eco*sense*  
BY SPRADLING



CAS-9611  
AMETHYST



CAS-9613  
CORK



CAS-9604  
INDIGO



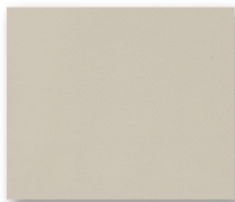
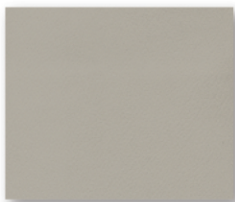
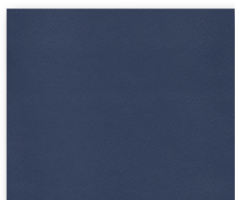
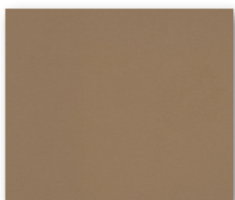
CAS-9607  
PATINA



CAS-9606  
SUCCULENTS

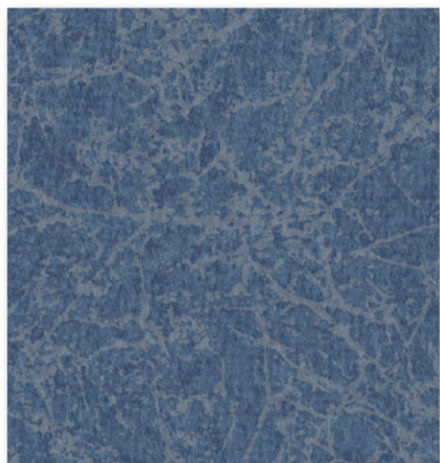
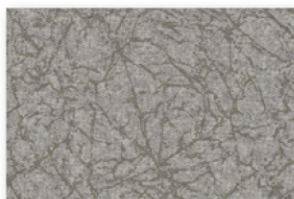
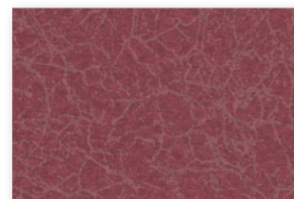
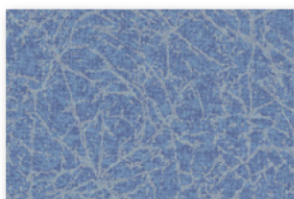
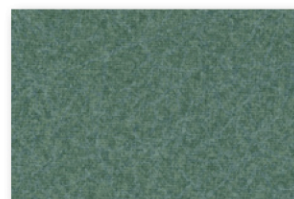
## PATRIOT PLUS

NEO

PAT-427  
BLUERIDGEPAT-8602  
OATMEALPAT-8604  
CONCRETEPAT-8567  
DOVEPAT-545  
ROYAL BLUEPAT-432  
IMPERIAL BLUEPAT-8584  
TAUPEPAT-8516  
CHESTNUTPAT-8615  
BERRY

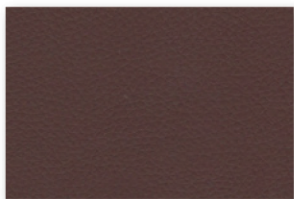
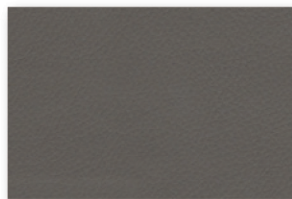
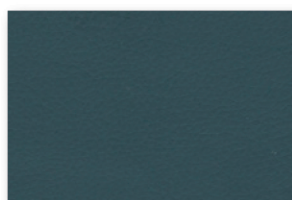
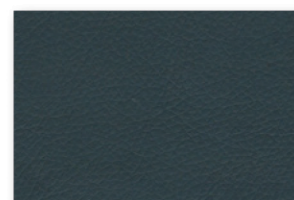
## RENAISSANCE

NEO

REN-9214  
STEEL BLUEREN-9201  
COBBLESTONEREN-9205  
GYPSUMREN-9208  
WINEBERRYREN-9207  
ICE BLUEREN-9210  
CYPRESSREN-9212  
BLUEJADE

## PERFORMANCE COLLECTION

## DOLCE

DOL-6705  
SANDDOL-6714  
BURGUNDYDOL-6727  
METEORDOL-6717  
MOSSDOL-6710  
LIONDOL-6724  
JETDOL-6725  
INDIGO

# Care and Cleaning Guide\*\*



We recommend cleaning at least once a week to extend the lifespan of the upholstery, which will prevent dirt and contamination buildup and permanent staining. In the event of a spill, wipe off any excess right away with a dry white cloth or fabric, but careful not to spread to remaining surface.



Clean the whole surface in a circular motion using liquid hand soap (pH neutral) and water (1 part soap to 9 parts water). Check the Approved Cleaners guide for recommended cleaning products. Wipe with a clean damp cloth to get rid of any excess soap. Repeat as needed and then let dry.



If there is any buildup that cannot be removed with soapy water, a mixture of 1 part isopropyl alcohol to 9 parts water can be used as a last resort. (Remember, using alcohol on a regular basis can affect the properties of the product).



Once a month, you can use a soft-bristle brush for a deeper cleaning. Remember, light colors need more care, more often.

Note: The cleaning products recommended were used in a laboratory setting. Spradling Group® has no relationship with the manufacturers of those cleaning products.

### For Color Transfer

Certain clothing and accessory dyes (such as those used on denim jeans) may migrate to lighter colors. This phenomenon is increased by humidity and temperature and is irreversible. Please check compatibility when using this product in combination with painted or varnished surfaces.

### Disinfectants

In addition to cleaning, healthcare facilities maintain disinfecting regimens to reduce the spread of infections. There is a wide variety of available biocides that include bleaches, peroxides and quaternary ammonium products, among others. They should always be used at the recommended dilution, never in concentrated form. To prolong the life of coated fabrics, the disinfectants should be rinsed off after each use. It should be noted that misuse of disinfectants is the major source of surface deterioration. Spradling International, Inc.® continually evaluates cleaners/disinfectants, and a list of those tested can be found on our website.

Abrasion test results exceeding ACT Performance Guidelines are not an indicator of product lifespan. Multiple factors affect fabric durability and appearance retention.

PBG®<sup>+</sup>, PERMAGUARD® and PERMABLOK® are registered trademark of Spradling Holdings, Inc. Lumex® is a trademark of GF Health Products, Inc.

©2021 Spradling International, Inc.®

\*This term and any corresponding data refer to the typical performance in the specific tests indicated and should not be construed to imply the behavior of this or any other material under actual fire conditions

\*\* Care and Cleaning Guide excludes Dolce.



GF Health Products, Inc. is an Intertek ISO 13485:2016 / MDSAP Certified Company

Color variations may occur due to monitor or printer settings.

Composition	NEO					
	Dolce	Patriot Plus	Renaissance	Guardian	Savoy	Cassara
PVC		■	■	■	■	
PU	■					
TPE						■
100% Polyester Hi-Loft <sup>2™</sup> Backing			■		■	
Polyester / Cotton Backing		■				
Ultra Hi-Loft <sup>2™</sup> Polyester Backing				■		
100% Rayon	■					
100% Polyester						■
Weight (oz)	15	34	32	30	30	22
Roll Size (yd)	30	30	30	30	30	30
Roll Width (inch)	54	54	54	54	54	54

### Codes\*

	DOL	PAT	REN	GUA	SAV	CAS
NFPA 260- Cover Fabric - Class I	■	■	■	■	■	■
UFAC Fabric - Class 1	■	■	■	■	■	■
CAL TB 117-2013	■	■	■	■	■	■
FMVSS 302	■	■				■

### Finishes and Treatments



	DOL	PAT	REN	GUA	SAV	CAS
Antibacterial Protection (1,000 hrs)				■	■	
AATCC TM 16-3 / NTC 1479 / CFFA-2a - Blue Wool (1,000 hrs)		■	■	■	■	■
QUV Stabilized Pigments (650 hrs)	■					
Abrasion - CFFA-1 ASTM D-4157-02	100k	100k	100k	100k	100k	100k
Wyzenbeek Cotton Duck	#10	#10	#10	#10	#10	#10
Cold Crack	-10°F	-20°F	-20°F	-10°F	-10°F	-10°F

### Applications

	DOL	PAT	REN	GUA	SAV	CAS
Corporate Interiors   Restaurant   Hotel	■	■	■	■	■	■
Casino   Sunroom   Residential	■	■	■	■	■	■
Healthcare	■	■	■	■	■	■
Marine Interior		■	■	■		
Exterior Approved				■		



\* This term and any corresponding data refer to the typical performance in the specific tests indicated and should not be construed to imply the behavior of this or any other material under actual fire conditions.

