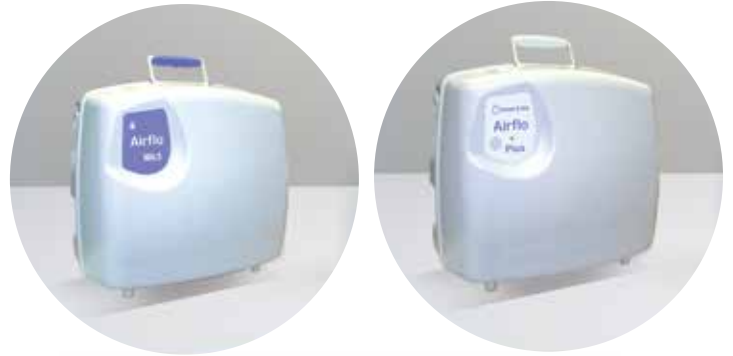


# Airflo Diagnostic Guide



**This leaflet is designed to guide you through a simple diagnostic procedure if you have any problems with your Airflo compressor.**

Depending on when your equipment was purchased, your Airflo model will vary. If you purchased pre June 2017, you are likely to be using an Airflo MK3 or and Airflo Plus.



**Airflo Mk3 is used to inflate:**

- Bathing Cushion
- Surfer Bather
- Handy Pillowlift
- Sit U Up Pillowlift
- Leglifter



**Airflo Plus is used to inflate:**

- ELK lifting cushion
- Camel lifting cushion



**Introduced in June 2017,  
the new generation models,  
Airflo 12 and Airflo 24 have  
improved performance and  
lifting power.**



**Airflo 12 used to inflate:**

- Bathing Cushion
- Surfer Bather
- Handy Pillowlift
- Sit U Up Pillowlift
- Leglifter

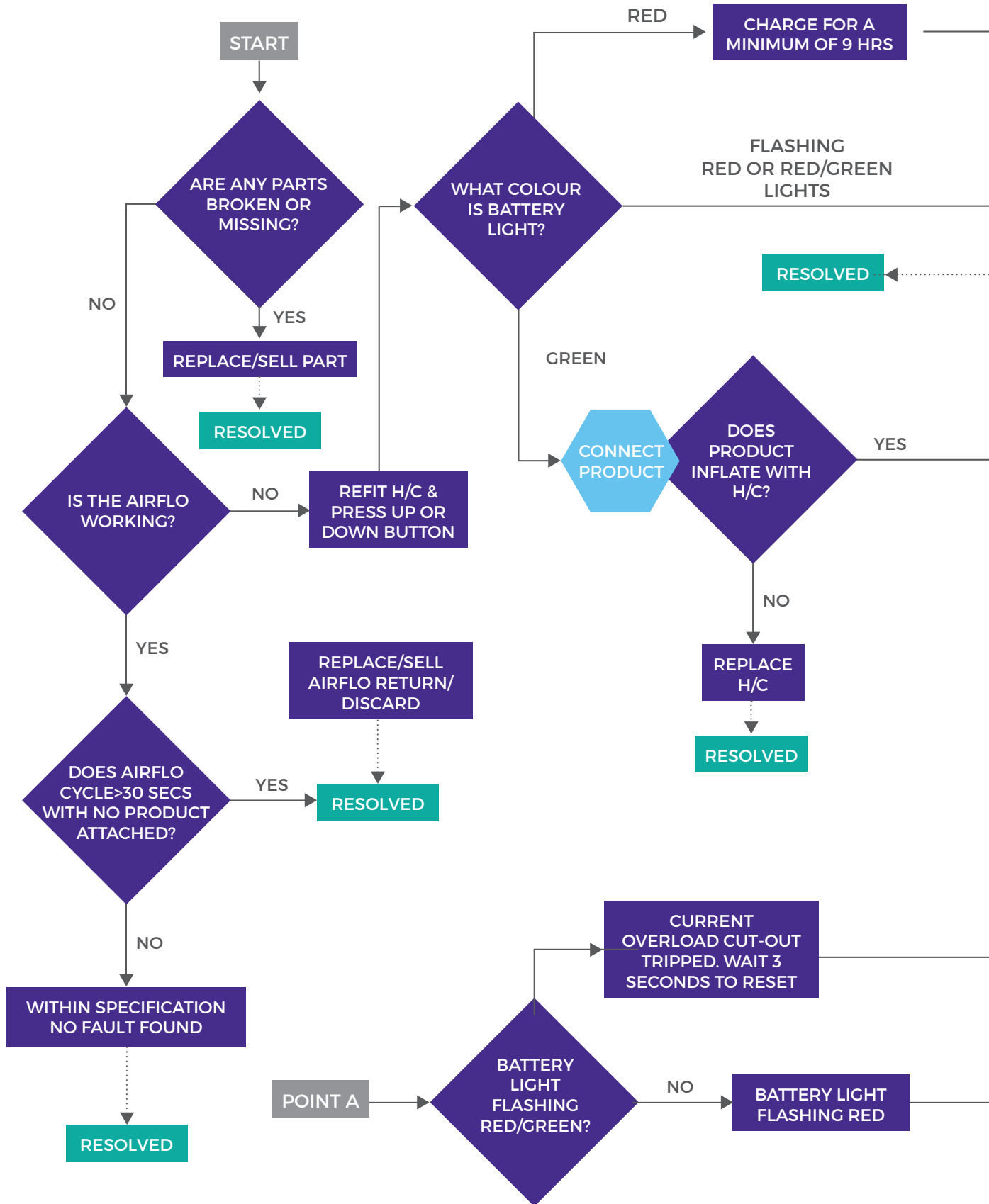


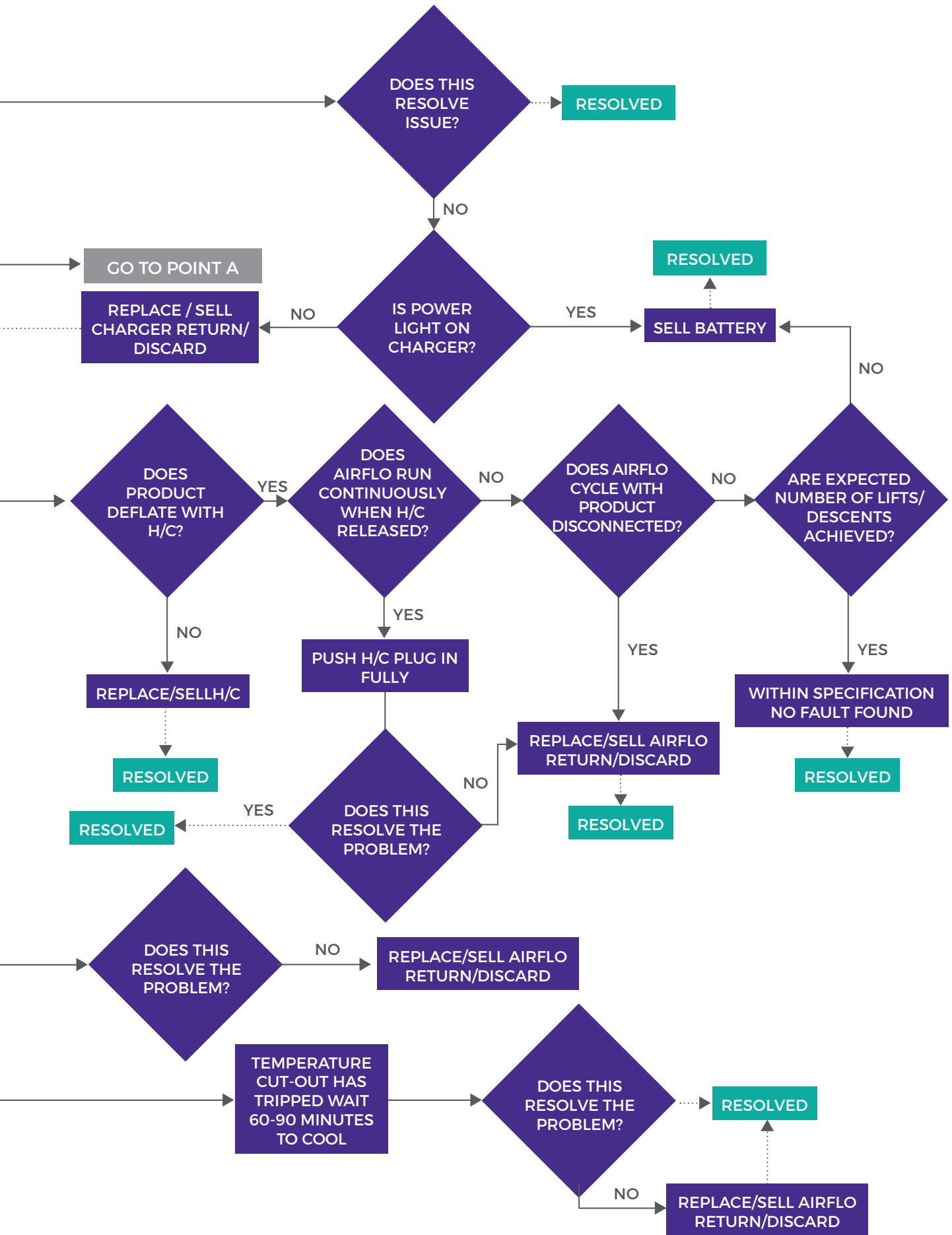
**Airflo 24 is used to inflate:**

- ELK lifting cushion
- Camel lifting cushion

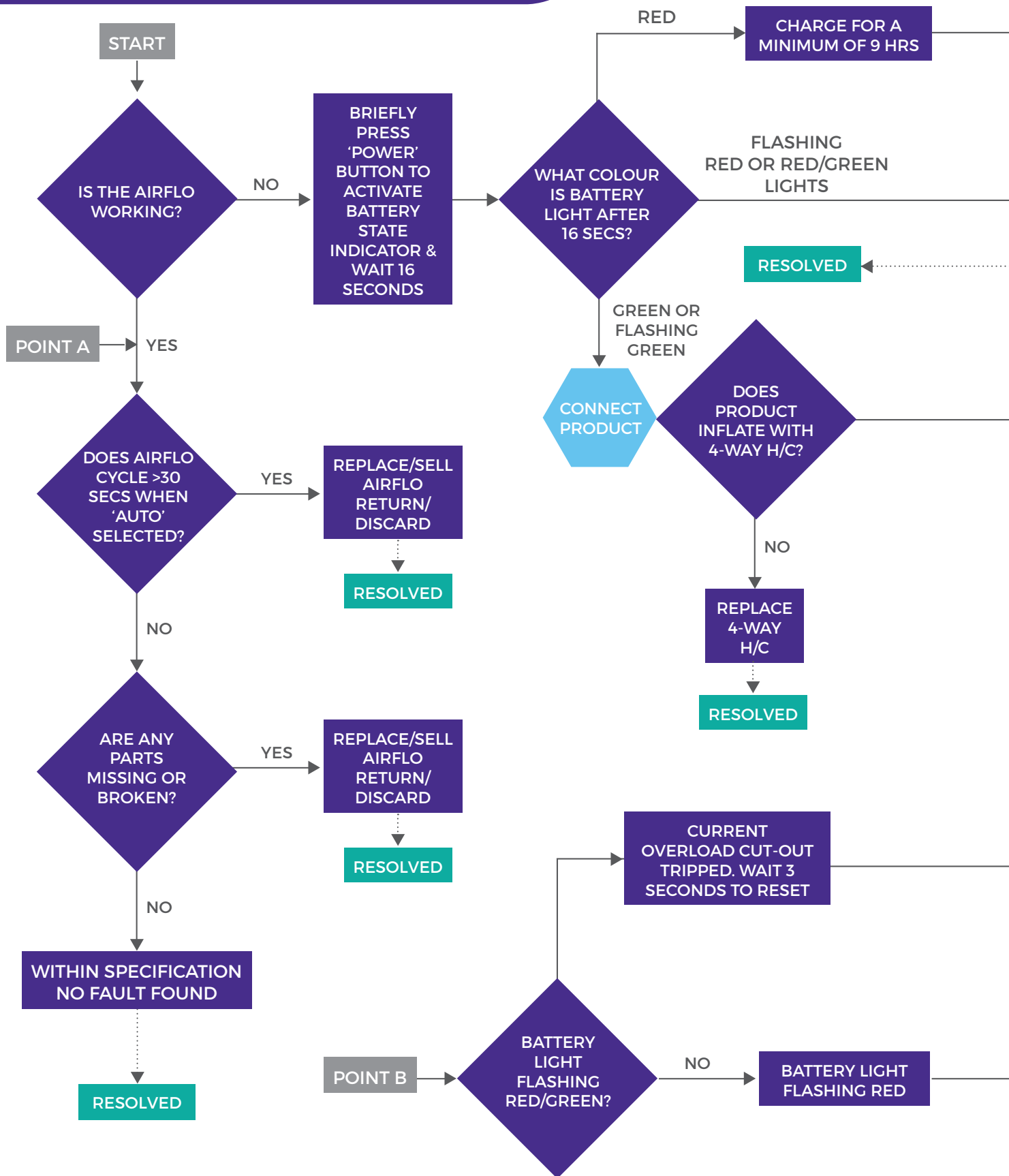


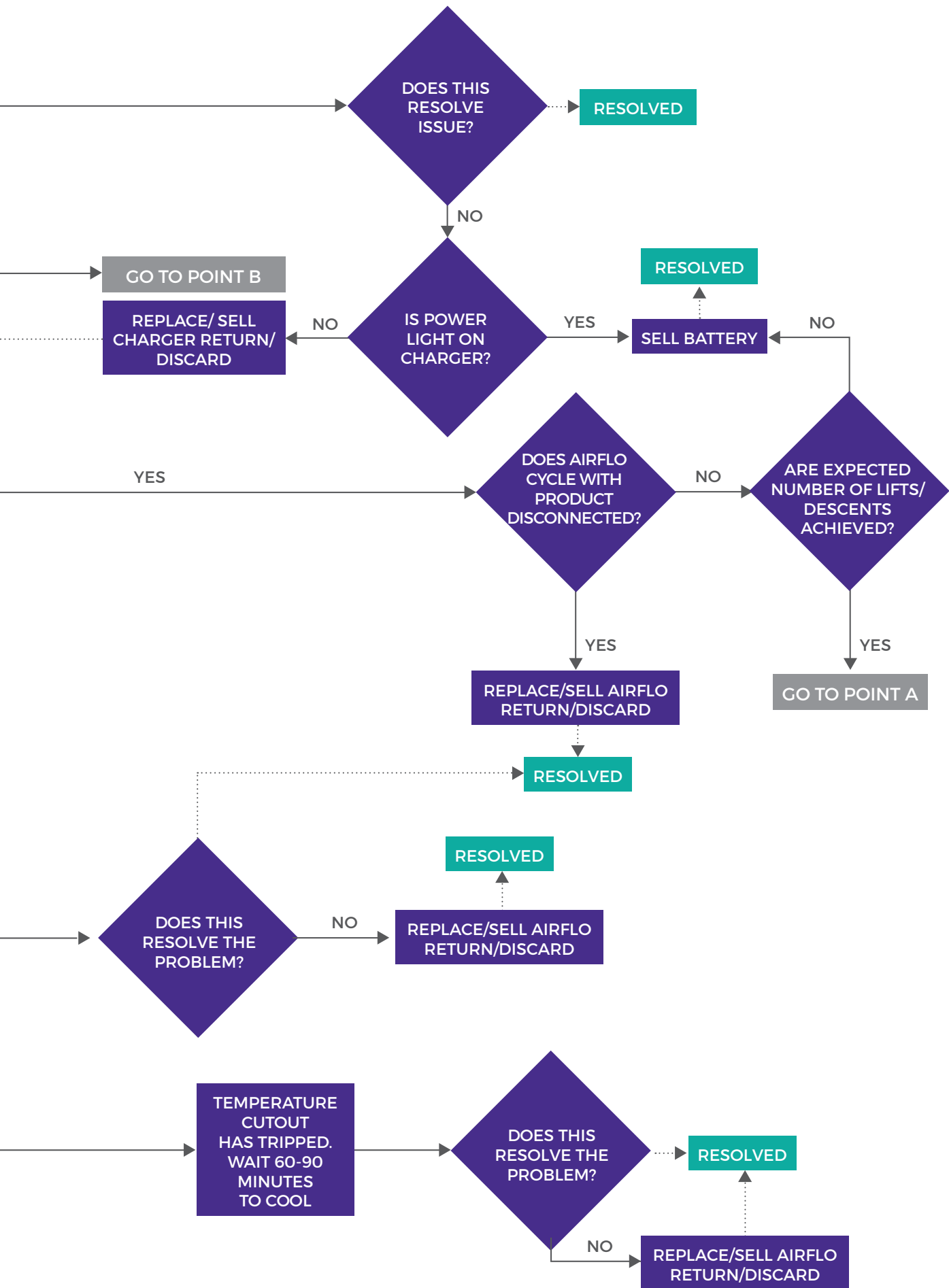
# Airflo Mk3 Fault Finding Chart



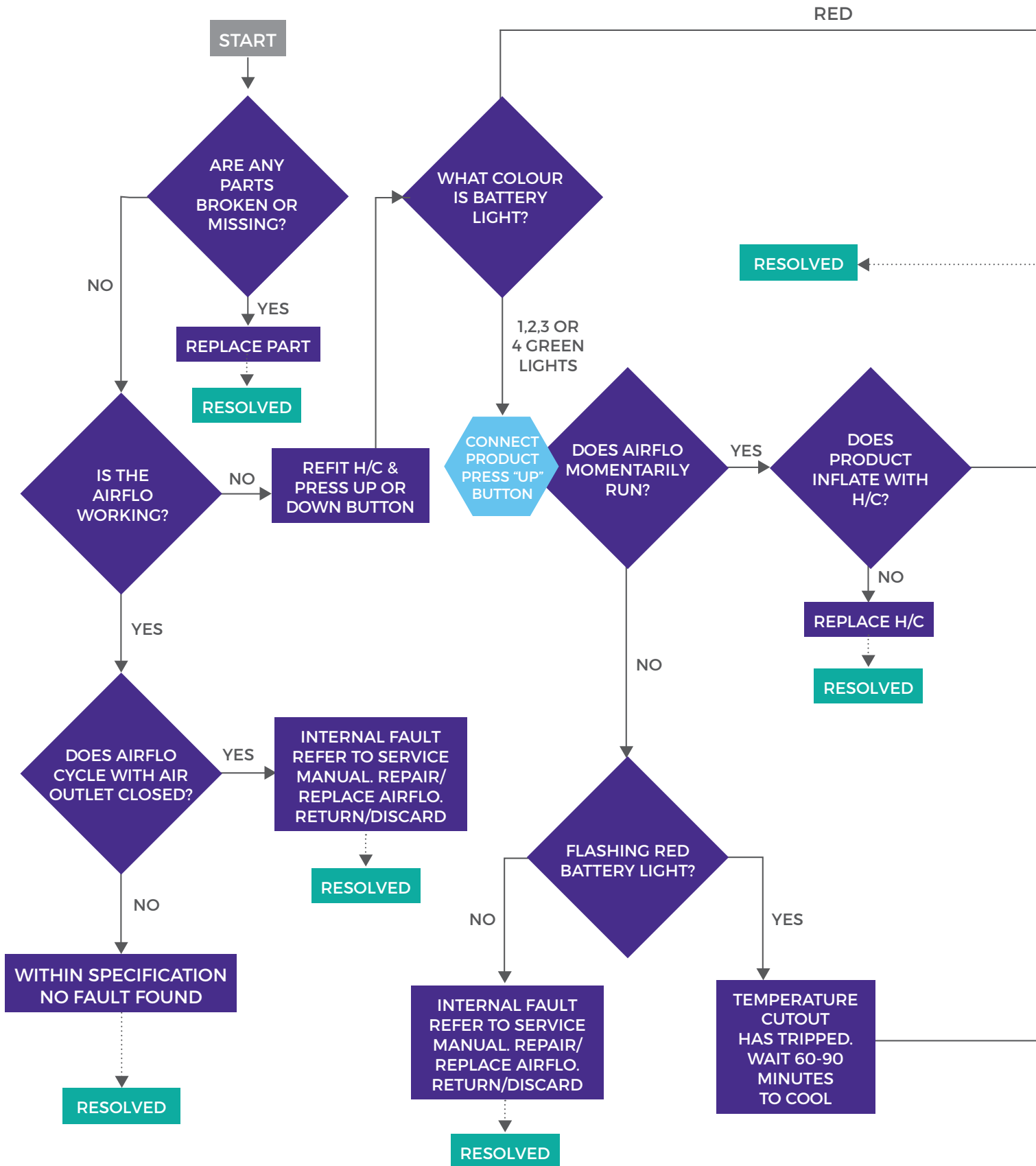


# Airflo Plus Fault Finding Chart

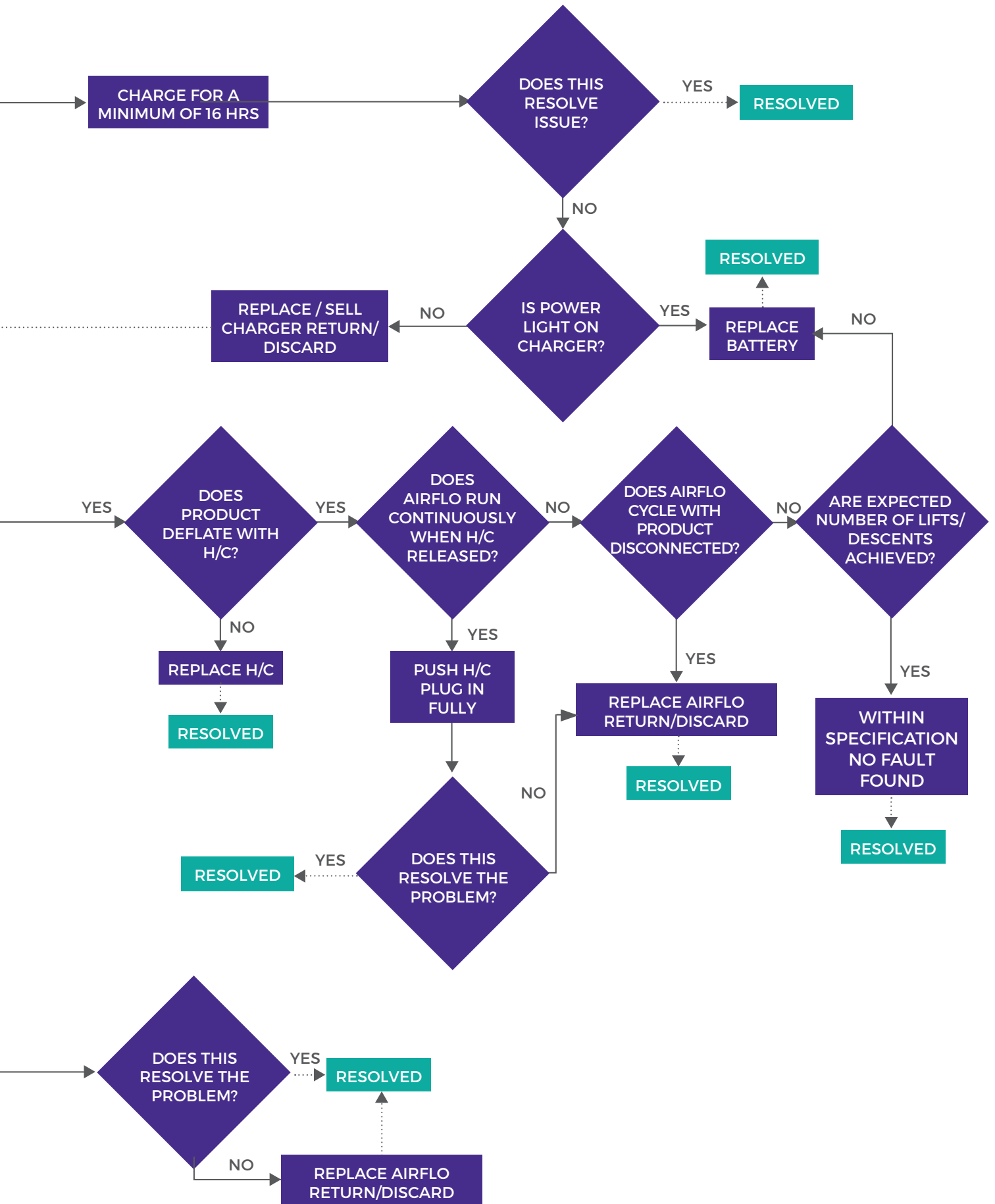




# Airflo 12 Fault Finding Chart







# Airflo 24 Fault Finding Chart

