

## Comparing PMI's electrodes with the competitors

Shown here are the results of a Dispersion Meter Test.

An electrical current is passed through each electrode for a period of 60 seconds. The electrical voltage output is identical for each electrode. The blue/green color shows the current being dispersed through the electrodes.

Because of Pepin Manufacturing's unique manufacturing process, PMI electrodes are able to fully disperse the electrical current across the entire surface of the electrode.

We also use copper lead wires with special heads that help promote greater dispersion and prevent wire pull out. Finally, we use only the finest gel on the market today for greater reusability and superior performance.

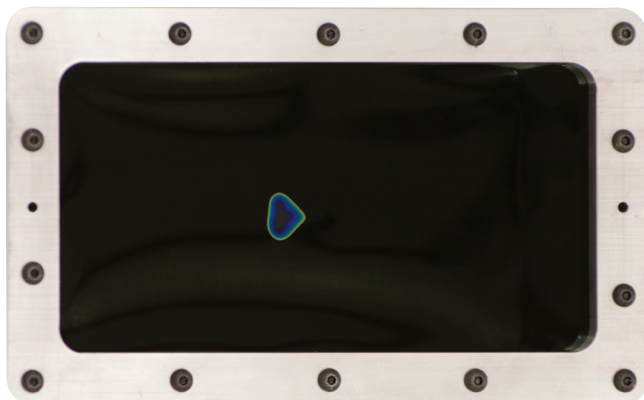
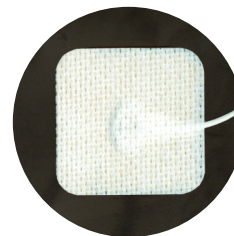
**You simply cannot buy a better electrotherapy electrode!**

Competitors  
Electrode

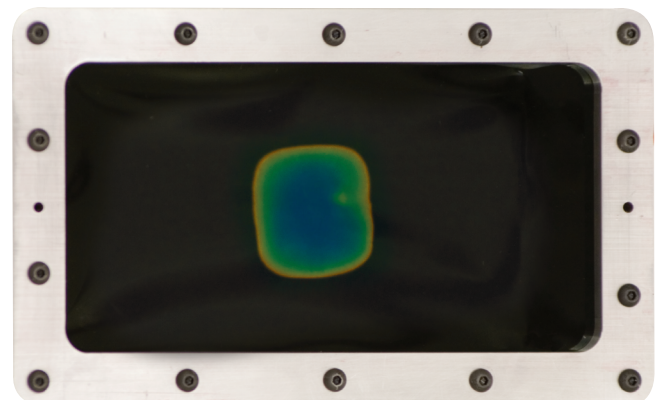


Dispersion Meter Test

PMI's  
Electrode



Current is concentrated in a small area, creating a "hot spot" that is less effective.



PMI electrodes are able to **fully disperse** the electrical current throughout the entire surface of the electrode.