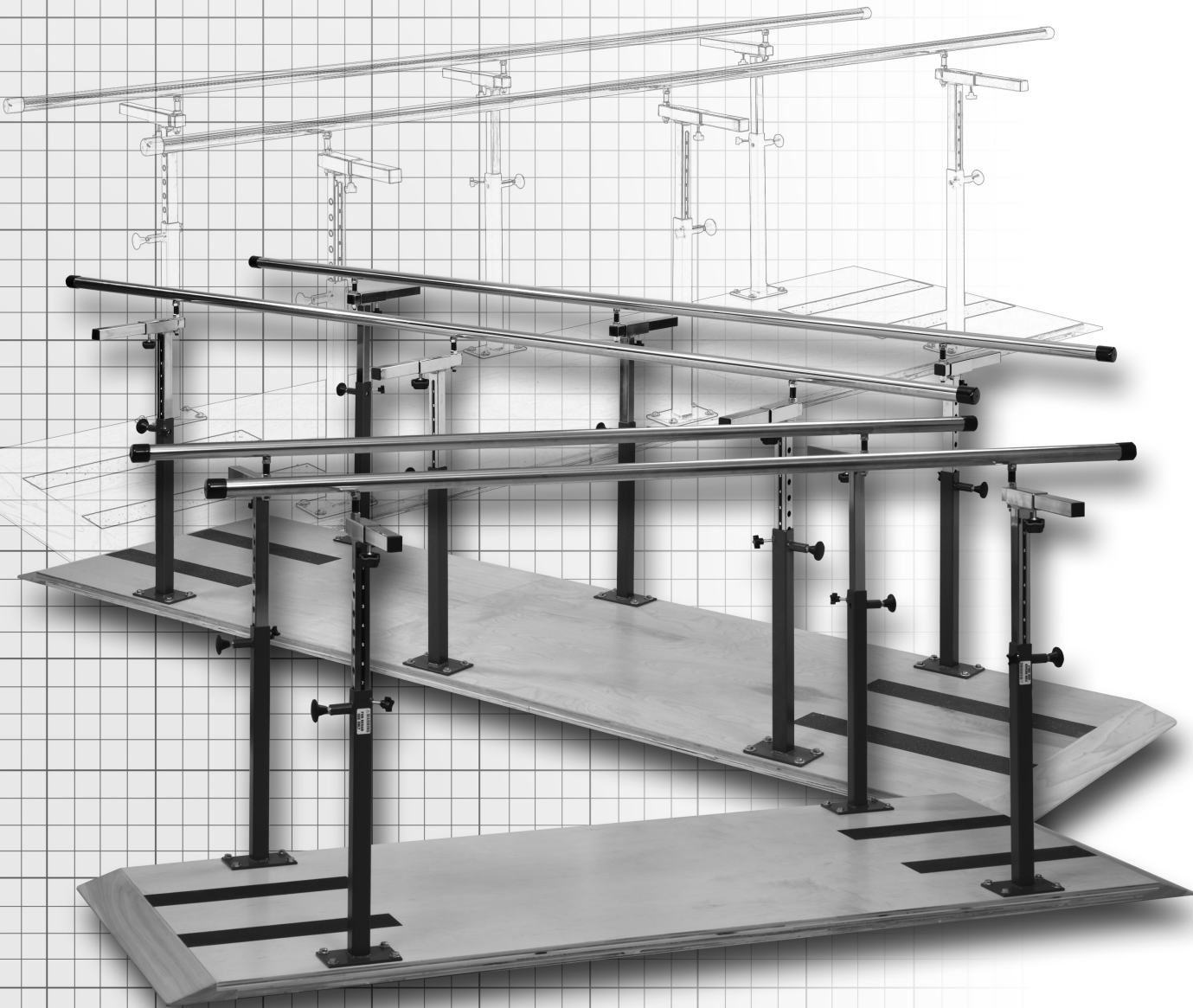




PLATFORM MOUNTED PARALLEL BARS

MODELS 3-2007, 3-2010, 3-2012 & 3-2106



ASSEMBLY INSTRUCTIONS

ASSEMBLY INSTRUCTIONS FOR PLATFORM MOUNTED PARALLEL BARS

MODELS 3-2007, 3-2010, 3-2012 & 3-2106

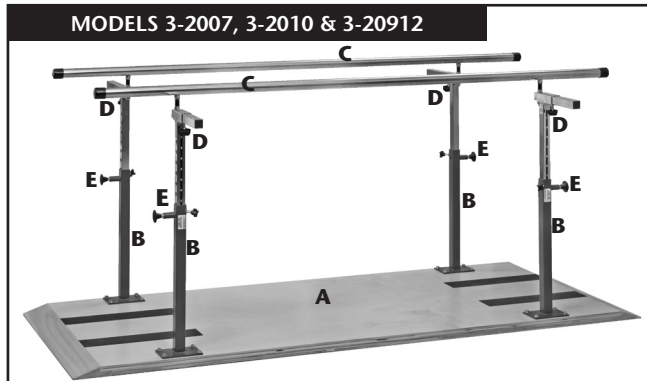
MAXIMUM WEIGHT CAPACITY ON MODELS 3-2007, 3-2010 & 3-2012 – 400 LBS

MAXIMUM WEIGHT CAPACITY ON MODEL 3-2106 – 500 LBS

Thank you for counting on Clinton to meet your physical therapy needs by purchasing this equipment. All Clinton equipment is designed and manufactured to provide years of dependable service because we want you as a customer now and in the future. Below are easy to follow instructions on how to properly assemble your equipment. Please contact us at 800-441-9131 if you experience any difficulty with the assembly or have questions.

INTENDED USE

Clinton Parallel Bars, models 3-2007, 3-2010, 3-2012 & 3-2106, are specifically designed and engineered for physical therapy use only. Equipment is intended to be used by a single person at a time, who is attended to and observed by trained medical/physical therapy personnel. Never leave anyone use the parallel bars unattended. Person's weight and the combination of force exerted on the equipment during treatment is not to exceed the weight capacity for that specific model.

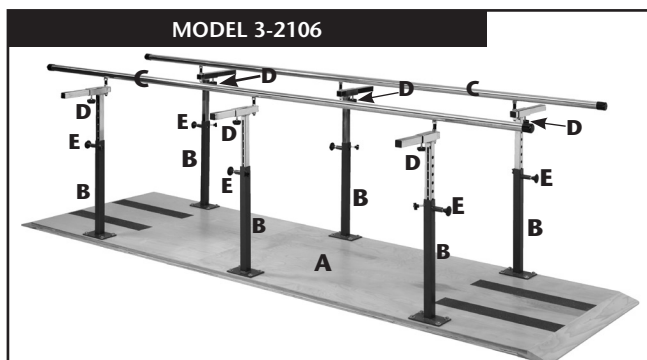


MODELS 3-2007, 3-2010 & 3-2012

- | | |
|--|---|
| <ul style="list-style-type: none"> A. Platform with Safety Strips B. 4 Telescoping Upright Posts with Number Indicator Strips C. 2 Stainless Steel Handrails D. Width Adjustment E. Height Adjustment | <p>Hardware</p> <ul style="list-style-type: none"> (16) 1 1/2" Hex Bolts (16) 7/8" Washers (4) Small Star Knobs (4) Width Adjustment Star Knobs <p>Tools Required</p> <ul style="list-style-type: none"> • Socket Wrench <p>Time Required</p> <ul style="list-style-type: none"> • 20 – 30 Minutes |
|--|---|

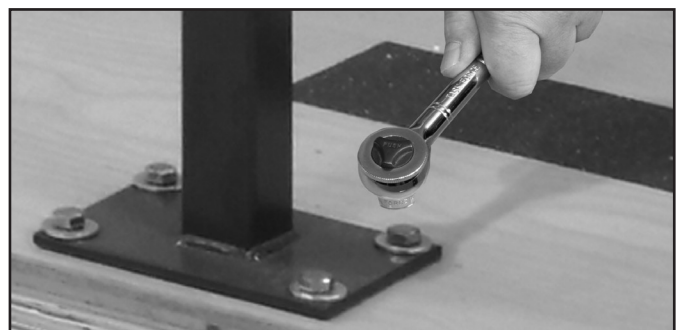
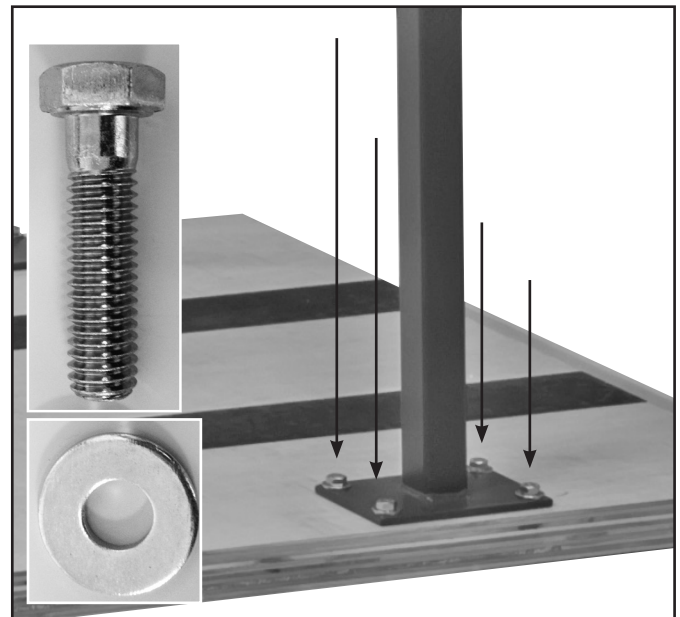
1 For 12 foot long model (3-2012), The platform is shipped in two pieces. Join the platform by flipping it over and joining the two pieces by inserting the flat head screws provided into the pre-applied inserts

2 Mount all telescoping posts to the platform, (4 for models 3-2007, 3-2010 & 3-2012) (6 for bariatric model 3-2106) using 1 1/2" Hex Bolts and 1" washers on each post. Secure tight with a socket wrench.

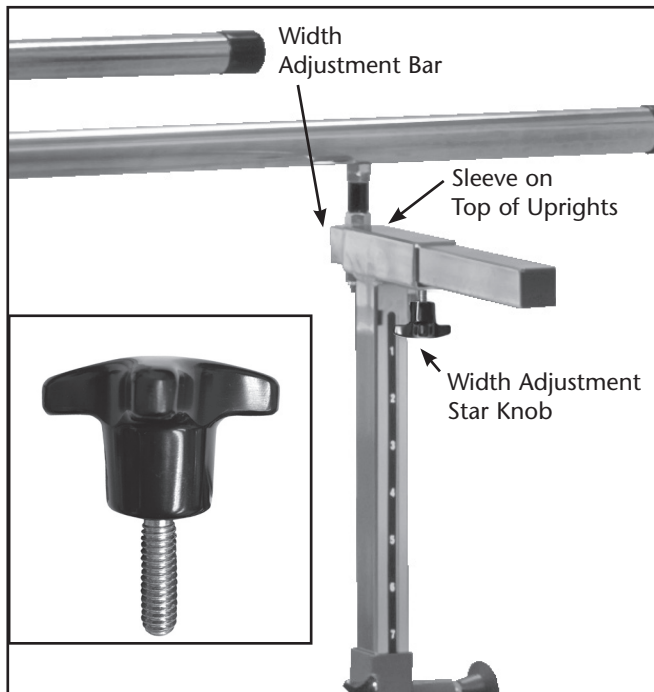


MODELS 3-2106

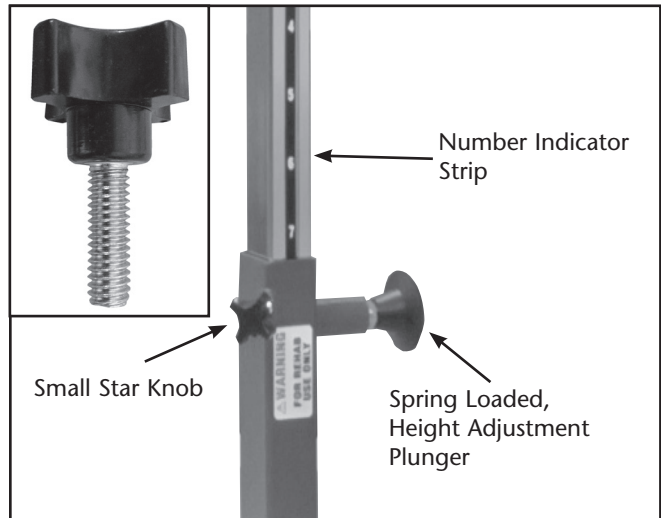
- | | |
|--|---|
| <ul style="list-style-type: none"> A. Platform with Safety Strips B. 6 Telescoping Upright Posts with Number Indicator Strips C. 2 Stainless Steel Handrails D. Width Adjustment E. Height Adjustment | <p>Hardware</p> <ul style="list-style-type: none"> (24) 1 1/2" Hex Bolts (24) 7/8" Washers (6) Small Star Knobs (6) Width Adjustment Star Knobs <p>Tools Required</p> <ul style="list-style-type: none"> • Socket Wrench <p>Time Required</p> <ul style="list-style-type: none"> • 20 – 30 Minutes |
|--|---|



3 Slide the width adjustment bar that is attached to the handrails through the sleeve on top of each upright post. Adjust to desired width and tighten the width adjustment star knob to secure in place. Repeat the process for each upright.



4 Adjust the height of each handrail with the spring-loaded plunger on each upright. Height is selected with the help of the number indicator strip. After adjusting the plunger, tighten the small star knob next to the plunger on the upright. Repeat the process for all uprights.



5 Clean with disinfectant according to Cleaning Guidelines and facility standards prior to use.

FOR SAFETY PURPOSES, TAKE TIME TO CHECK ALL FASTENERS AND STAR KNOBS TO INSURE THAT THEY ARE SECURELY TIGHTENED AND THAT THE EQUIPMENT HAS BEEN PROPERLY ASSEMBLED ACCORDING TO THESE INSTRUCTIONS.

Warranty

Clinton Industries warrants manufactured products to be free of defects in materials, workmanship or design under normal use for five years on all mechanical products and electrical components from the date of purchase. This warranty does not include damage resulting from accident, abuse or misuse, alteration, or negligence of the product and expressly excludes normal wear of parts. Contact Clinton for full warranty details. ANY ALTERATIONS TO OUR PRODUCTS VOIDS ALL WARRANTIES AND CLAIMS.



Care & Cleaning

Clinton products are built to be durable. With proper care, your Clinton equipment will provide years of superior looks and performance. Clean table with a soft cloth and any mild cleaning agent that may be required for sanitation. NEVER use abrasive scrubbing agents that may scratch the surfaces. **Prior to cleaning entire surface, test cleaning agents on an inconspicuous area. Note that certain cleaning agents can be harmful to the surfaces of the product. Periodically check all fasteners to make sure they remain secure.**



800-441-9131 • 717-848-3519

Toll-Free Fax 866-522-1233

Fax 717-843-5871

www.clinton-ind.com