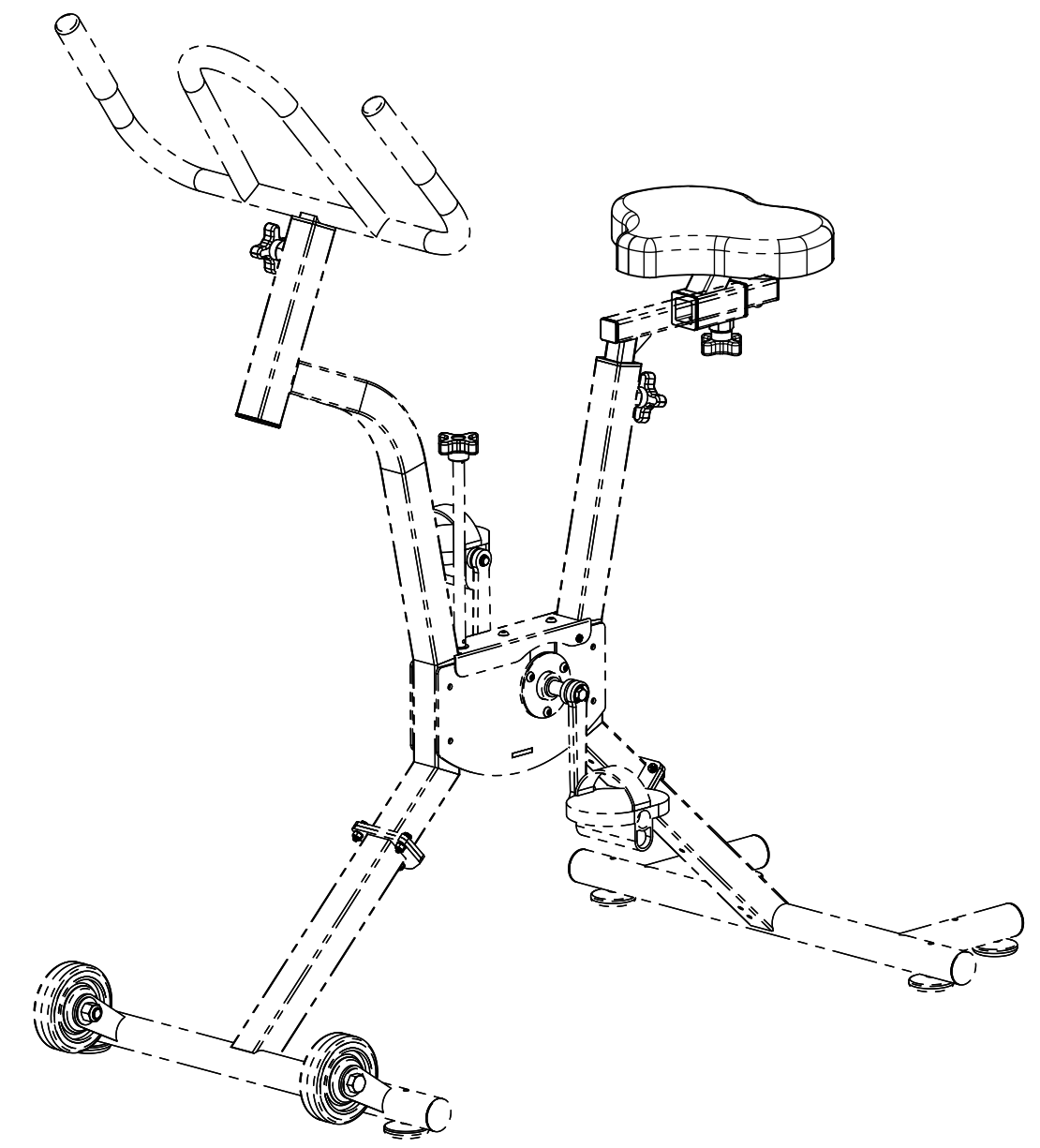
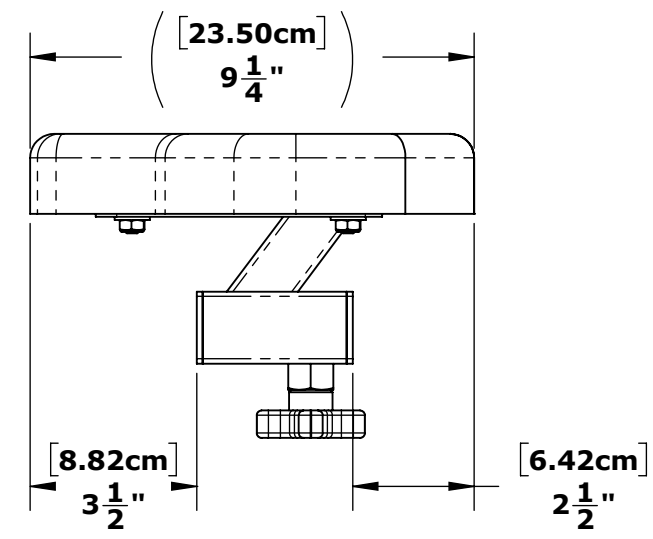
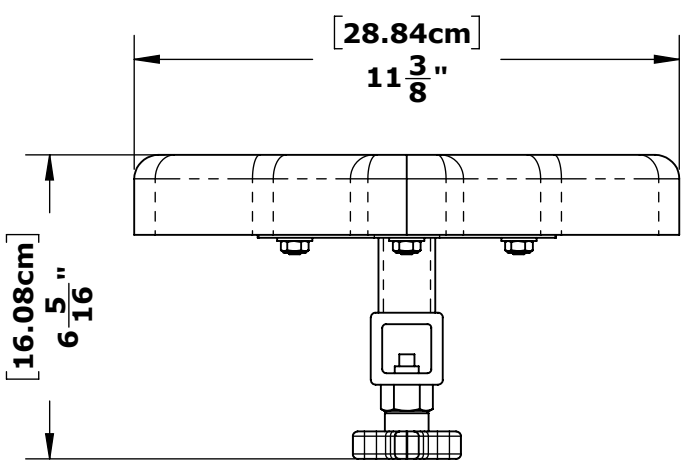
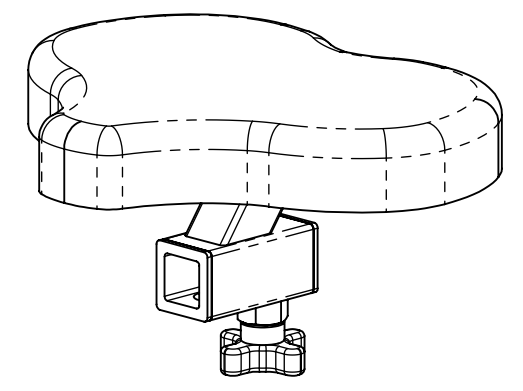
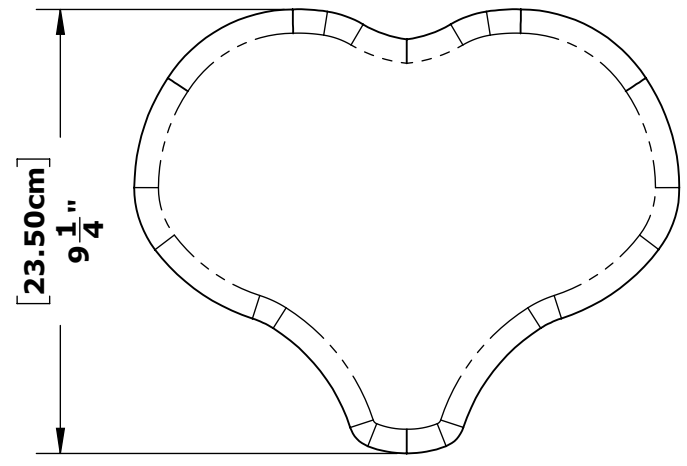


**SPECIFICATIONS:**  
**SEAT: UHMW PLASTIC, FOAM, VINYL & STAINLESS STEEL**  
**SEAT: 4 SEAT ADJUSTMENT SETTINGS**  
**POOL DEPTH: 3-5 FEET(0.9-1.5 METERS) FOR OPTIMAL USE**  
**WEIGHT CAPACITY: 300LBS (136KG)**  
**WARRANTY: 3 YEARS FOR FRAME (NOT INCLUDING POWDER COAT)**  
**1 YEAR FOR ALL OTHER COMPONENTS**



**TOLERANCES**  
 DIMENSIONS ARE IN INCHES  
 UNLESS OTHERWISE SHOWN  
 FRACTIONAL: ..... ±1/16  
 ANGULAR: ..... ±1°  
 TWO PLACE DECIMAL: .... ±.01  
 THREE PLACE DECIMAL: .. ±.005

**ASSEMBLY - ADJUSTABLE COMFORT SEAT**  
**F-PWCS**  
**PART NO. INV01533**

**MATERIAL: 316 STAINLESS STEEL**  
**FINISH: POWDER COAT - BLACK**  
**APPROX. WEIGHT: 3.74 LBS.**



**PROPRIETARY AND CONFIDENTIAL INFORMATION**

THIS DRAWING AND ALL INFORMATION CONTAINED HEREIN IS THE SOLE PROPERTY OF AQUA CREEK PRODUCTS LLC. ANY REPRODUCTION IN PART OR AS A WHOLE WITHOUT WRITTEN PERMISSION FROM AQUA CREEK IS PROHIBITED.

\*SPECIFICATIONS ARE SUBJECT TO CHANGE WITHOUT NOTICE

REVISIONS			
REV.	DESCRIPTION	DATE	APPROVED
P1	INITIAL RELEASE	11/28/2022	J.MAXWELL

51-163-220

SCALE  
1:4

SHEET  
**1**