

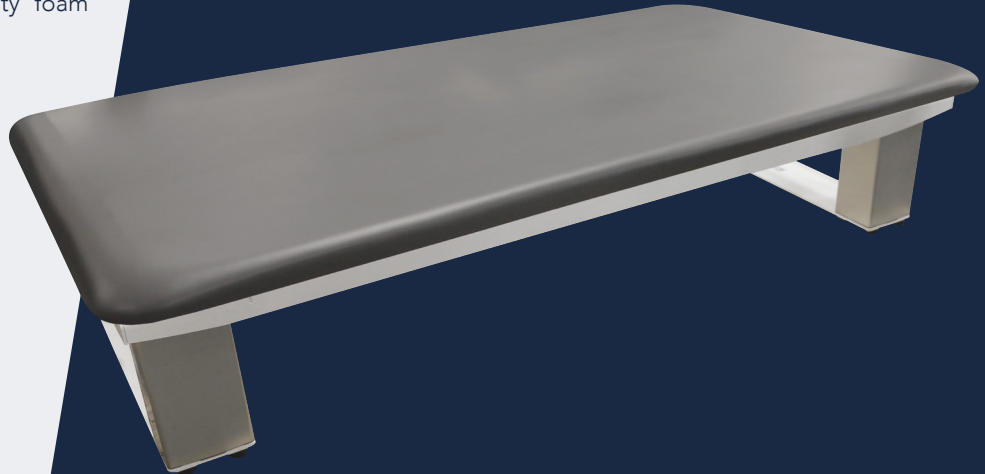


PT2001 Bariatric Hi-lo MAT TABLE

The PT2001 Bariatric Hi-Lo Mat Table is ideal for the rehabilitation setting and is available in a range of sizes to provide your facility with the option of delivering optimum care for larger patients. The table features 18-33" height range, single foot control and 1.5" high density foam cushion.

STANDARD FEATURES:

- Lifting Capacity: 750 lbs.
- Height range: 18-33"
- Durable steel base with powder coat finish
- 1.5" High density foam cushion
- Rounded corners
- Single foot control
- ADA Compliant



PT2001-47

STANDARD TABLES:

PT2001-47
48"W x 84"L x 18-33"H

PT2001-57
60"W x 84"L x 18-33"H

PT2001-68
72"W x 96"L x 18-33"H