



NOTE: IF YOUR TABLE HAS AN H BRACE OR SHELF, THE LEGS MUST BE INSTALLED WITH H BRACE HOLES FACING INSIDE, SEE PAGES 4 & 5

NOTE: TURN TABLE UPSIDE DOWN, PROTECT TOP FROM FLOOR WITH CARDBOARD OR ASSEMBLE UNIT ON A VERY SMOOTH SURFACE. REMOVE ALL COMPONENTS FASTENED TO THE UNDERSIDE. DO NOT ASSEMBLE UNIT ON ITS SIDE. UNIT IS SHIPPED WITH ARMBORAD ALREADY ASSEMBLED. TO USE, SLIDE BOARD TO RIGHT OR LEFT. ON H-BRACE AND FULL SHELF MODELS, MAKE SURE THAT THE LEGS ARE ASSEMBLED SO THAT THE PRE-DRILLED HOLES IN LEGS ARE FACING TO THE INSIDE OF THE TABLE. (SEE SEPARATE INSTRUCTION SHEET).

FOOT SECTION ASSEMBLY (SEE ILLUSTRATION, PAGE 2)

- STEP 1. ATTACH LEGS (B) FOUR EACH TO TABLE TOP (A) USING LAG BOLT, ITEM 1, LOCKWASHER, ITEM 2 AND FLAT WASHER, ITEM 3. DO NOT TIGHTEN DOWN.
- STEP 2. TO ATTACH FOOT SECTION (C) REMOVE PINS (D) FROM HINGE ON TABLE TOP (A) 2 PLACES. ATTACH FOOT SECTION (C) TO TABLE TOP (A) AND RE-INSTALL PINS (D) 2 PLACES. A HAMMER WILL BE NECESSARY TO TAP PINS INTO PLACE.
- STEP 3. ATTACH GATCH TUBE (E) THROUGH SLOT IN APRON OF TABLE TOP, NOTE HOLE POSITIONS IN ILLUSTRATION AND ATTACH OPPOSITE END TO ANGLES IN FOOT SECTION (C) USING SCREW, ITEM 4 AND NUT, ITEM 5. DO NOT TIGHTEN DOWN. TUBE MUST BE ABLE TO MOVE FREELY.
- STEP 4. SLIDE STIRRUPS THROUGH SLOT IN APRON AND THROUGH STIRRUP BLOCKS. SECURE END OF STIRRUPS USING PIN, ITEM 6. BEND OVER BOTH SIDES OF PIN. 2 EACH. (NOTE NOTCH LOCATIONS ON STIRRUPS).

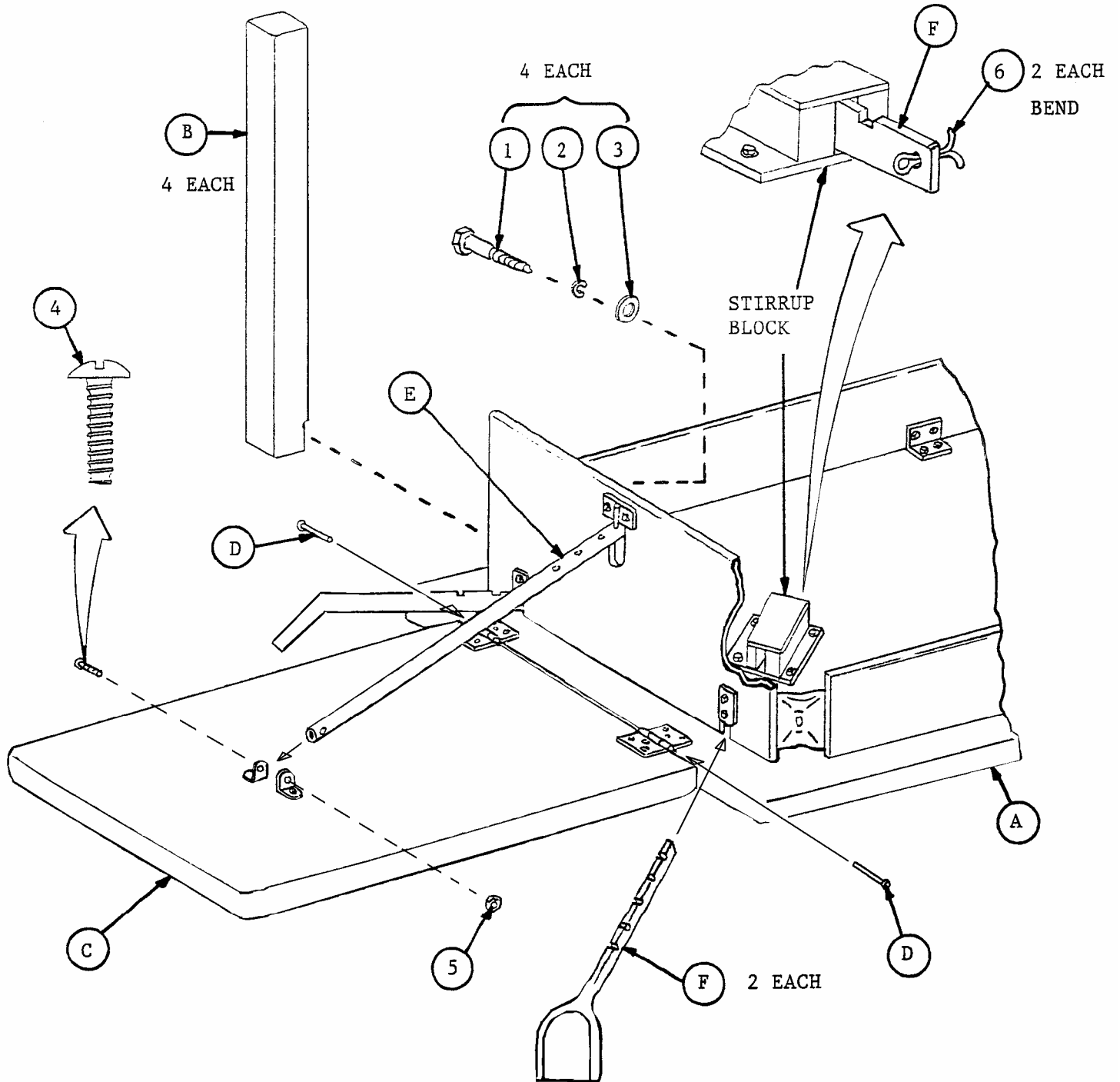
HEAD SECTION ASSEMBLY (SEE ILLUSTRATION, PAGE 3)

- STEP 5. TO ATTACH HEAD SECTION (G) REMOVE PINS (D) FROM HINGE ON TABLE TOP (A) 2 PLACES. ATTACH HEAD SECTION (G) TO TABLE TOP (A) AND RE-INSTALL PINS (D) 2 PLACES. A HAMMER WILL BE NECESSARY TO TAP PINS INTO PLACE.
- STEP 6. ATTACH GATCH TUBE (E) THROUGH SLOT IN APRON OF TABLE TOP, NOTE HOLE POSITIONS IN ILLUSTRATION AND ATTACH OPPOSITE END TO ANGLES IN HEAD SECTION (G) USING SCREW, ITEM 4 AND NUT, ITEM 5. DO NOT TIGHTEN DOWN. TUBE MUST BE ABLE TO MOVE FREELY.
- STEP 7. THE TABLE IS NOW ASSEMBLED. CHECK ALL PARTS FOR PROPER POSITION. TIGHTEN ALL SCREWS AND BOLTS EXCEPT ON ITEM 4 AND 5. MAKE SURE ALL COMPONENTS ARE SECURE PRIOR TO PLACING UNIT INTO SERVICE.

PARTS LIST			
ITEM	P/N	QTY.	DESCRIPTION
1	2401	4 EA.	3/8" X 4 LAG BOLT
2	3597	4 EA.	3/8" LOCKWASHER
3	3610	4 EA.	3/8" FLAT WASHER SAE
4	1210	2 EA.	1/4-20 X 1 1/2 TRUSS HEAD MACHINE SCREW
5	2540	2 EA.	1/4-20 HEX NUT
6	3370	2 EA.	1/8 X 1" COTTER PIN

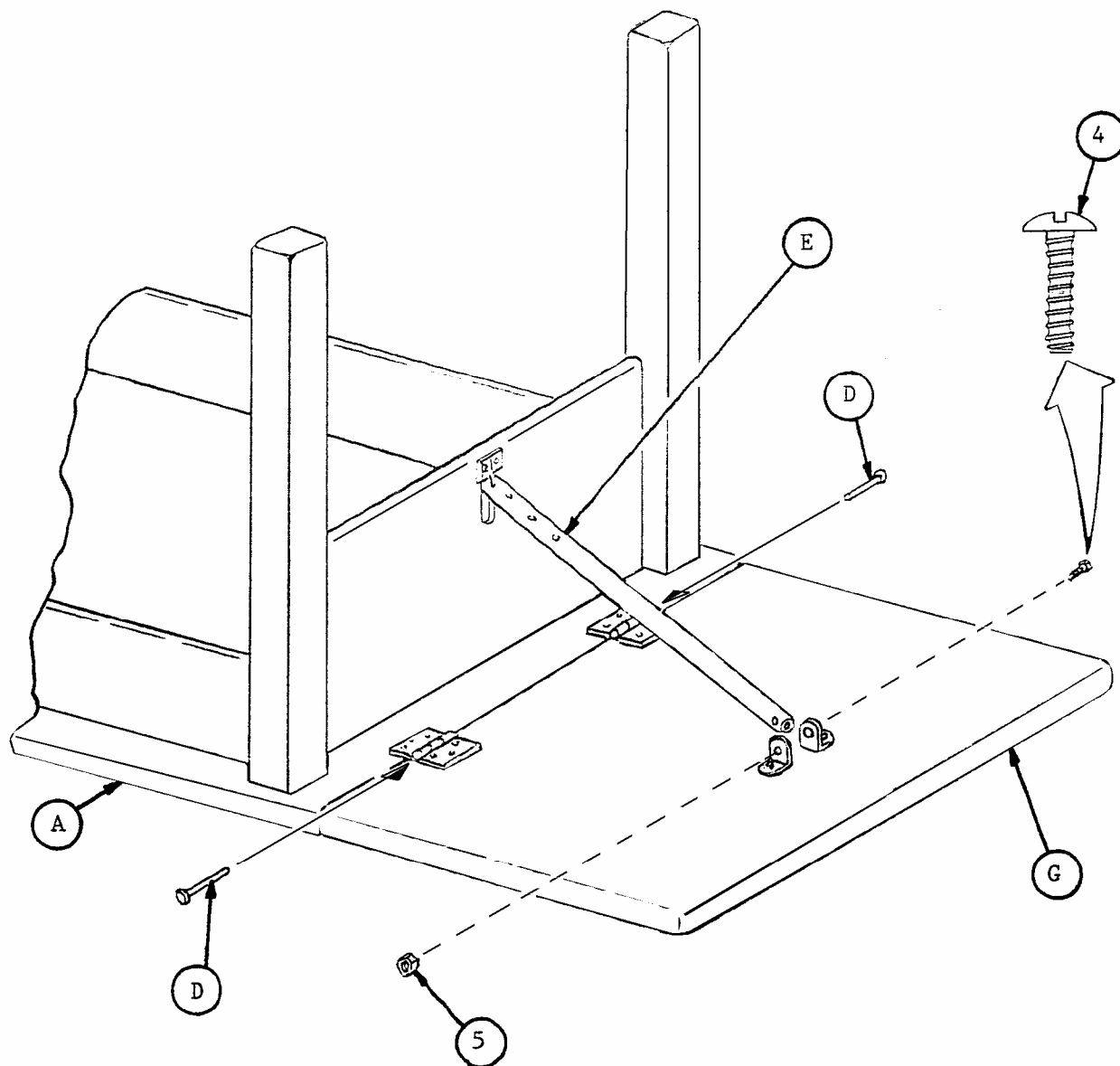
NOTE: IF YOUR TABLE HAS AN H_BRACE OR SHELF, THE LEGS MUST BE INSTALLED WITH H BRACE HOLES FACING INSIDE, SEE PAGES 4 & 5

FOOT SECTION ASSEMBLY

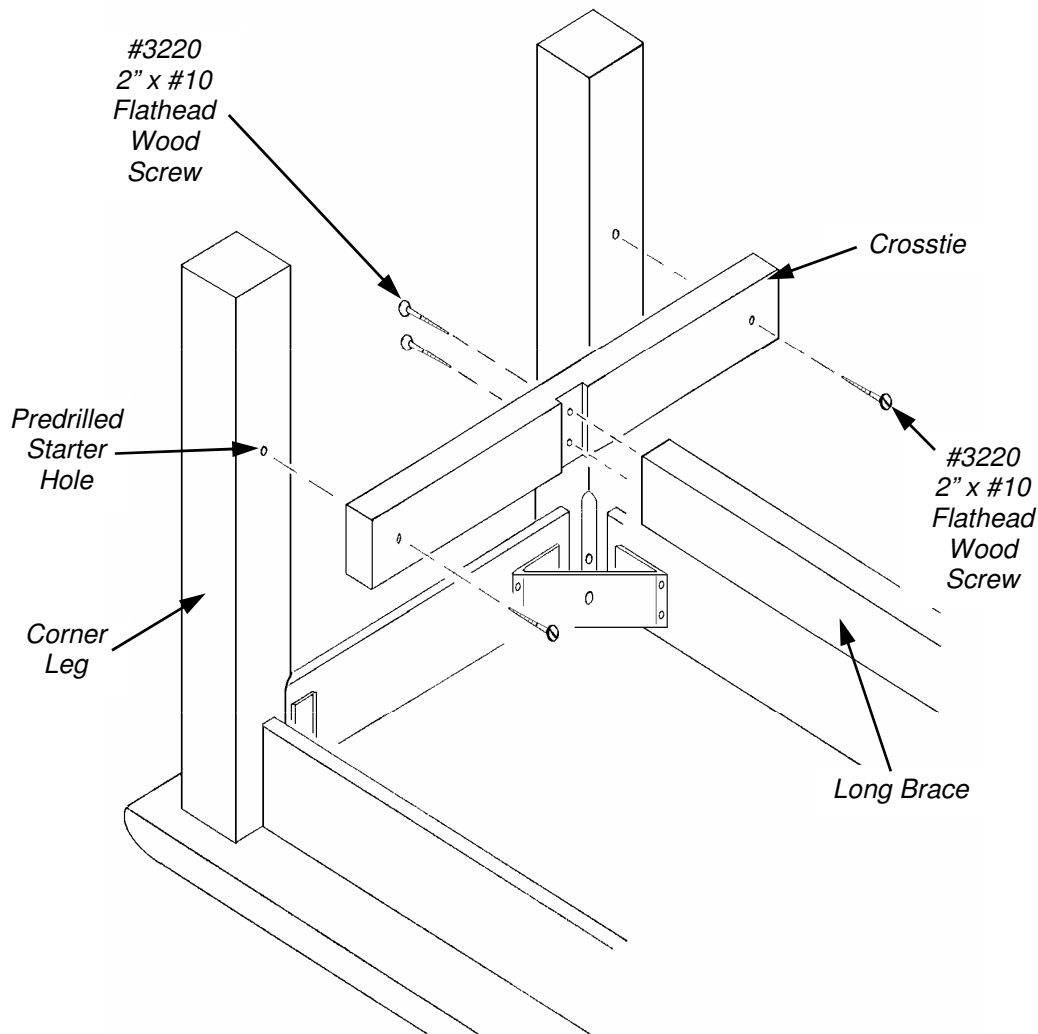


NOTE: IF YOUR TABLE HAS AN H_BRACE OR SHELF, THE LEGS MUST BE INSTALLED WITH H BRACE HOLES FACING INSIDE, SEE PAGES 4 & 5

HEAD SECTION ASSEMBLY



Models 491 & 493 H-Brace Assembly



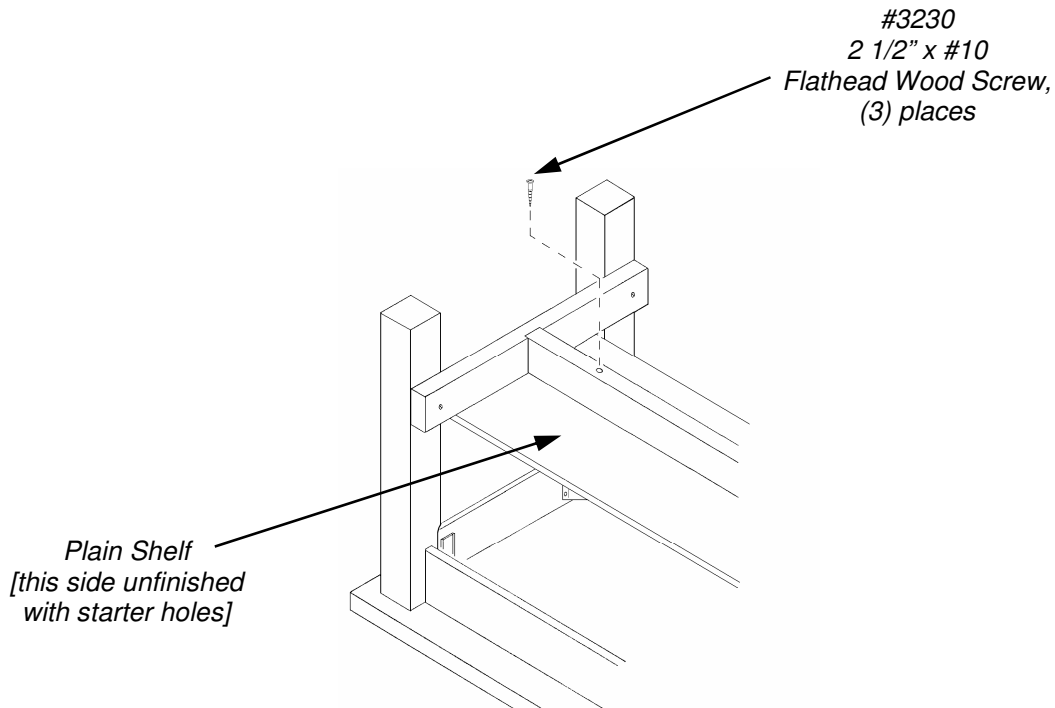
H Brace Assembly, Model 491 and 493 H-Brace Models Only:

Attach each of the two (2) Crossties to a pair of Legs [Crosstie notches face inward toward each other, Figure 3] at each end using one (1) 2" x #10 Flathead Wood Screw per leg.

The screws go through the predrilled holes in Crossties and into predrilled starter hole in Legs. **Do not tighten the screws! Crossties must be loose enough to move.** Attach the Long Brace between the Crossties, using two (2) 2" x #10 Flathead Wood Screws through each Crosstie and into starter holes in the Long Brace. **Do not tighten the screws!**

Finally, tighten all screws gradually all around the table, until all are tight.

Model 492 Plain Shelf Assembly



H Brace & Shelf Assembly, Model 492 Plain Shelf Models Only:

Refer to H Brace Diagram on previous page. Attach each of the two (2) Crossties to a pair of Legs [Crosstie notches face inward toward each other, Figure 3] at each end using one (1) 2" x #10 Flathead Wood Screw per leg.

The screws go through the predrilled holes in Crossties and into predrilled starter hole in Legs. **Do not tighten the screws! Crossties must be loose enough to move.** Attach the Long Brace between the Crossties, using two (2) 2" x #10 Flathead Wood Screws through each Crosstie and into starter holes in the Long Brace. **Do not tighten the screws!**

Note, Plain Shelf Models: there are three predrilled holes in the Long Brace which must have the countersunk side facing away from the shelf.

For all Plain Shelf Models, attach the Plain Shelf to Long Brace with unfinished side against the Brace, using three (3) 2 1/2" x #10 Flathead Wood Screws. The Shelf has three (3) predrilled starter holes in one unfinished side. Align these with the matching holes in the Long Brace and install the Wood Screws. **Tighten** these three Screws from the center outward, until the shelf is flush with the Long Brace and the Screws are flush or slightly below the wood surface.

Finally, tighten all screws gradually all around the table, until all are tight.