



S9™ and H5i™ Series

SLEEP THERAPY SYSTEM

Accessories Guide

English



PRODUCT CODES

S9 AutoSet™	36005
S9 AutoSet and H5i	36015
S9 AutoSet and Climate Control kit ¹	36025
S9 AutoSet and H5i for Her	36075
S9 Elite™	36003
S9 Elite and H5i	36013
S9 Elite and Climate Control kit ¹	36023
S9 Escape™	36001
S9 Escape and H5i	36011
S9 Escape and Climate Control kit ¹	36021
S9 Escape Auto™	36002
S9 Escape Auto and H5i	36012
S9 Escape Auto and Climate Control kit ¹	36022
H5i	36900
H5i with cleanable water tub	36901

PRODUCT CODES

S9 VPAP™ S	36004
S9 VPAP S and H5i	36014
S9 VPAP S and Climate Control kit ¹	36024
S9 VPAP™ Auto	36006
S9 VPAP Auto and H5i	36016
S9 VPAP Auto and Climate Control kit ¹	36026
S9 VPAP Adapt	36007
S9 VPAP Adapt and H5i	36017
S9 VPAP Adapt and Climate Control kit ¹	36027
S9 VPAP ST	36008
S9 VPAP ST and H5i	36018
S9 VPAP ST and Climate Control kit ¹	36028

REIMBURSEMENT CODES

Filter (disposable), 2 per month	A7038
Tubing, 1 per 3 months	A7037
Tubing with integrated heating, 1 per 3 months	A4604
Humidifier water tub, 1 per 6 months	A7046

¹ Includes H5i and ClimateLine™ tubing

S9™ Series
More. Comfort.

RESMED

S9 ACCESSORIES



SlimLine™ tubing
36810



Standard tubing
• 6'6" replacement standard tubing
14987



Standard tubing wrap
33963



S9 90W power supply unit
36821



DC/DC converter
24V/90W output
36970



S9 travel bag
36860



ResMed Power Station II (RPS II)
24923



SlimLine tubing wrap
36811

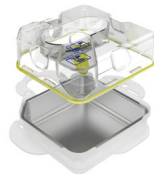
- 6'6" replacement autoclavable standard tubing
14986
- 6' replacement standard tubing
14994
- 9' replacement standard tubing
14999 (VPAP only)

S9 30W power supply unit
36920

H5i ACCESSORIES



ClimateLine tubing
• 6'6" ClimateLine tubing
36995
• 6'6" ClimateLine^{MAX} tubing
36997



H5i standard water tub
36803



H5i cleanable water tub (MPMU)
36800



H5i flip lid
36891



H5i flip lid seal
36892



H5i air outlet and outlet clip
36894

DATA MANAGEMENT ACCESSORIES



ResScan™ patient management software
Contact ResMed for product ordering information.



SD card protective folder
• **36840** (10 pack, including SD Card)
• **36845** (10 pack, folder only)



SD card reader
36931
• USB extension cable
7071015



S9 USB adapter
36950



S9 oximeter adapter²
36940



S9 wireless module
36930



S9 complete oximetry kit²
369100

² Not compatible with S9 Escape or S9 Escape Auto.