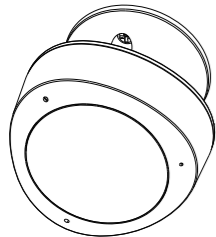


Smart Sensor User Manual

SAT-1065



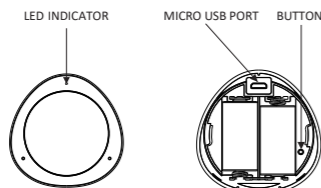
1. PRODUCT OVERVIEW

SAT-1065 is a Wi-Fi based PIR sensor. You can check the device status, battery level, alarm record and even receive push notification via APP when it detects someone moving within the detection range.

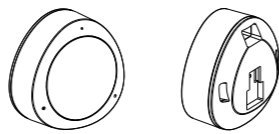
2. PRODUCT FEATURES

- Digital PIR sensor with low power consumption and strong anti-interference performance;
- Standard 2.4G wireless Wi-Fi communication technology, two methods for Wi-Fi inclusion, EZ and AP;
- 2x123A batteries operated or USB powered;
- Compliant with CE, FCC and RoHS;
- Elegant design and flexible installation;
- Low battery alert and alarm push notification on APP;
- Immediate report when vibration triggered;

3. PRODUCT STRUCTURE



2



Definition of LED Indicator

AP Mode	LED indicator blink slow in red
EZ Mode	LED indicator blink fast in red

Button Instruction

In the network	Press and hold the Button for 5s then release, resume to default setting, then it enters into EZ inclusion mode
Out of the network	Press and hold the Button for 5s then release to switch EZ/AP mode

Note:

1. In the network: Device has been included into the network.
2. Out of the network: Default setting, never configured for Wi-Fi

3

4. Specifications

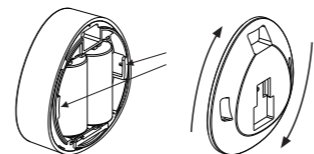
Power Supply	6V 2*CR123A or 5V 1A USB DC power
Working current	40mA
Standby current	40uA
Battery Capacity	1300mAh
Detection Distance	8m
Detection Angle	120°
Wireless transmitting and receiving frequency	2.4 GHz-2.484GHz
Network protocol supported	IEEE802.11b/g/n
Encryption type	WEP/TKIP/AES,WPS
Transmitting power	802.11b: +14dBm@ 11Mbps 802.11g: +13.5dBm@ 54Mbps 802.11n: +13dBm@ MCS7_HT20
Receiving sensitivity	802.11b: +17dBm@ 11Mbps 802.11g: +15dBm@ 54Mbps 802.11n: +13dBm@ MCS7
Working temperature	-10 ~ +40 °C
Storage temperature	-20 ~ +60 °C
Relative humidity	8 ~ 80%RH

Caution:
Please do not use the DC power exceeding 5V 1A to power the device

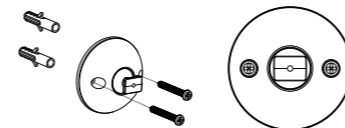
4

5. INSTALLATION

- (1) Power on (battery or USB).



- (2) Install the sensor's holder in desired location with screws or 3M glue.



- (3) Insert the multi-sensor into its holder.



5

6. Download app

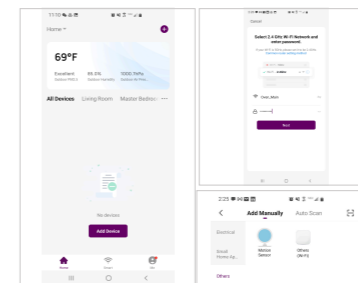
- 6.1 Scanning following QR codes to download APP for Android and IOS System



- 6.2 Start the APP and register an account with your email address then login APP with your account;

7.Add Devices

- Open the APP and type your mobile number or email address, and then confirm password to complete the registration.

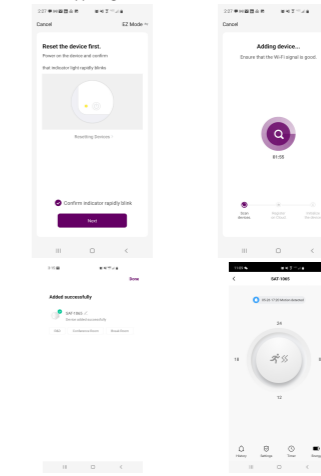


6

- 7.2 Add the device to the network.

•EZ Mode

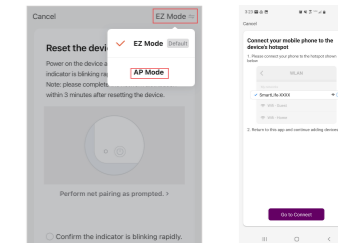
Power on, the red LED indicator will blink fast, then enter the EZ mode. Click the "Confirm indicator is blinking rapidly", and click the "Next", it will add device, once it is connected successfully, click "Done" upper right and switch to the device main interface.



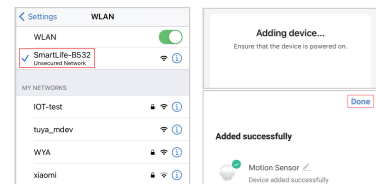
7

•AP Mode

Power on, the red LED indicator will blink fast and hold the button for 5S time, then the LED indicator will blink slowly in red, Select "AP Mode" upper right, click "Confirm the indicator is blinking slowly" and click the "Next", then click "Go to Connect".



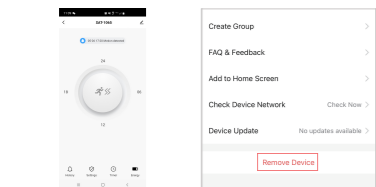
8



- 7.3 Users can re-name or share the device after Wi-Fi connection is finished.

8. Delete devices

8.1 Click the upper right on the device main interface, and click "Remove Device", select "Disconnect" and then click "Confirm" to remove this device from APP. Select "Disconnect and wipe data" and then click "Confirm" to remove this device from APP and all related data will be wiped.

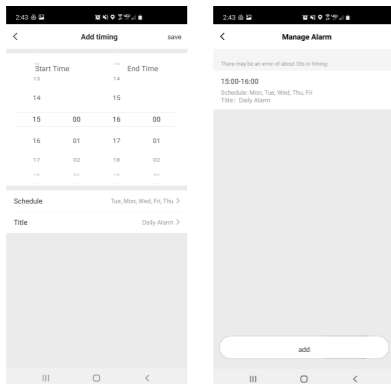


9

9. ALARM FUNCTION

The SAT-1065 is equipped to support alarms on a 24 hour (military time) based clock. Users can set scheduled alarms and receive text alerts if the device does not detect motion within the time period specified.

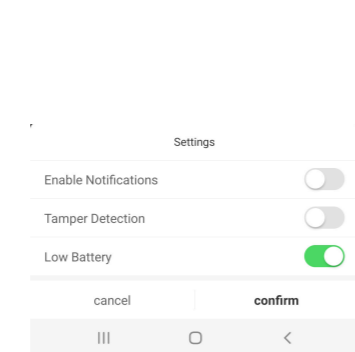
- To set an alarm, tap "Manage Alarm" and tap "add."
- The start time must be earlier than the end time for the timer to set successfully.



10

10. PIR SETTINGS

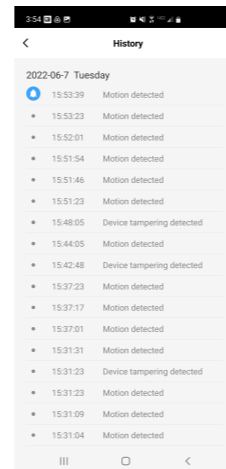
The SAT-1065 allows users to be notified of motion, tamper detection, and alarms. The smart sensor also contains technology to monitor battery charge, and alert when it detects the battery is low. These notifications can be toggled on and off within the settings panel of the SAT-1065.



11

11. Motion Detection History

The SAT-1065 keeps a running log of activity, showing when the device has detected motion. This information can be viewed by tapping "History" on the main sensor panel.



12

12. FCC NOTICE

This device complies with part 15 of the FCC Rules. Operation is subject to the following two conditions:
(1) This device may not cause harmful interference
(2) This device must accept any interference received, including interference that may cause undesired operation.

The manufacturer is not responsible for any radio or tv interference caused by unauthorized modifications or change to this equipment. Such modifications or change could void the user's authority to operate the equipment.

This equipment has been tested and found to comply with the limits for a Class B digital device, pursuant to part 15 of the FCC Rules. These limits are designed to provide reasonable protection against harmful interference in a residential installation. This equipment generates, uses and can radiate radio frequency energy and, if not installed and used in accordance with the instructions, may cause harmful interference to radio communications. However, there is no guarantee that interference will not occur in a particular installation. If this equipment does cause harmful interference to radio or television reception, which can be determined by turning the equipment off and on, the user is encouraged to try to correct the interference by one or more of the following measures:

- Reorient or relocate the receiving antenna.
- Increase the separation between the equipment and receiver.
- Connect the equipment into an outlet on a circuit different from that to which the receiver is connected.
- Consult the dealer or an experienced radio/TV technician for help.

13

14

15

16