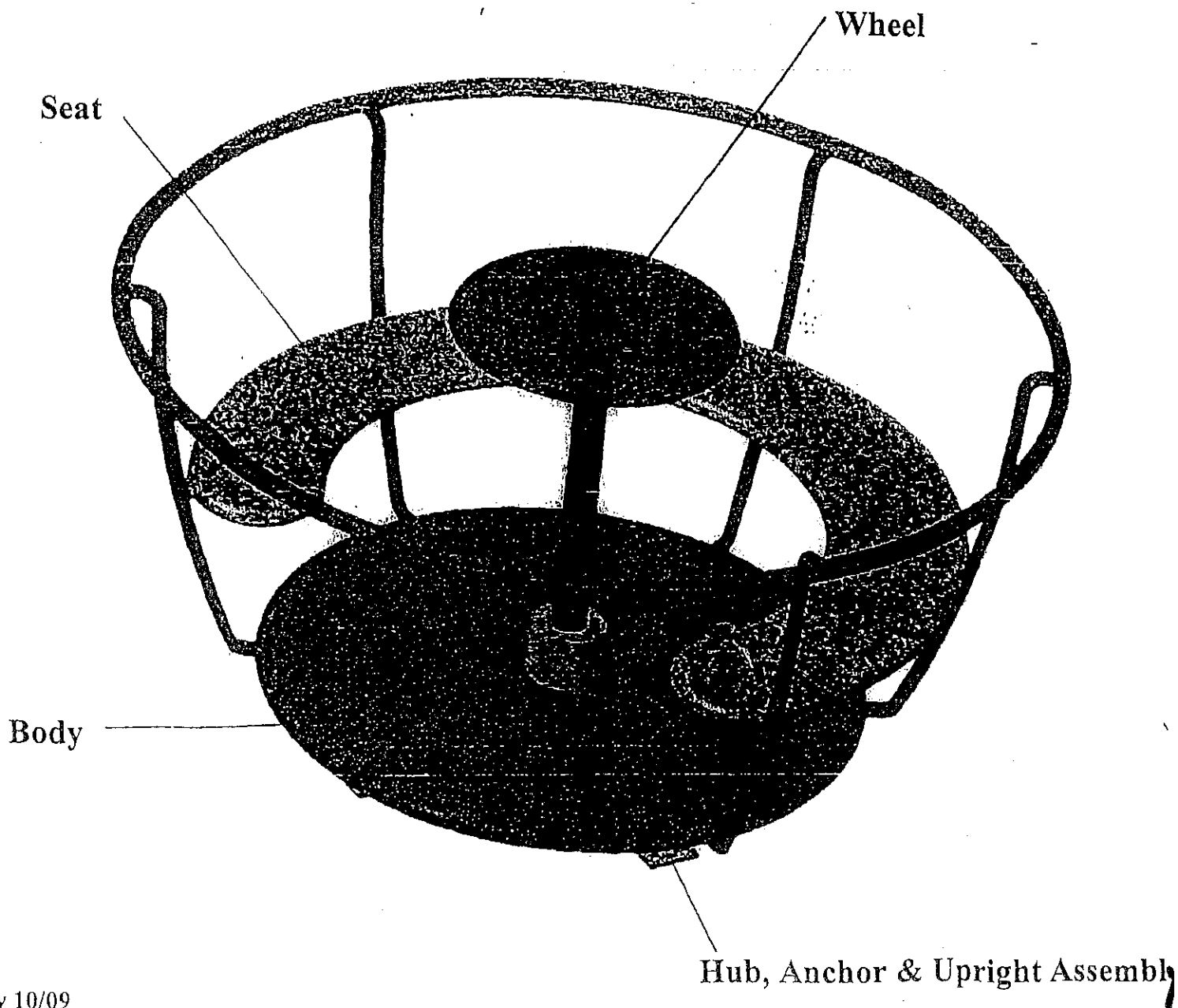


Tea Cup Merry Go Round

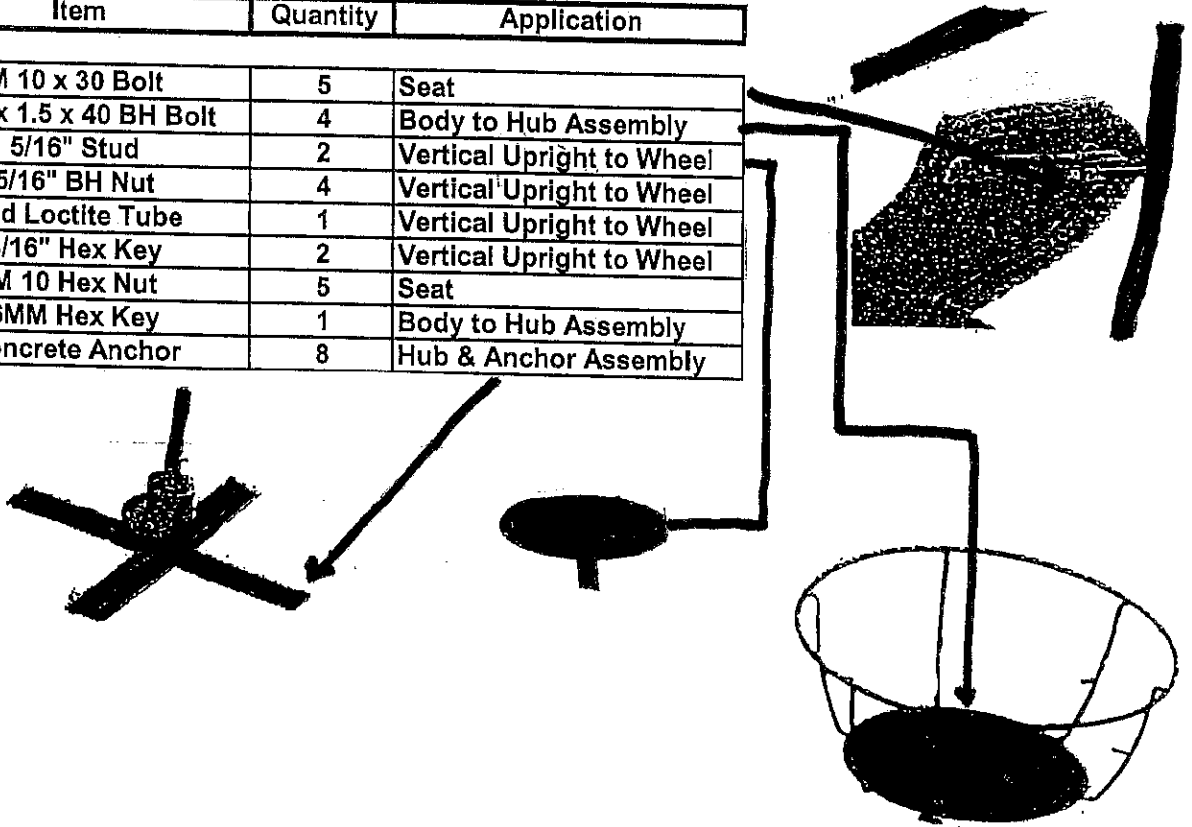
Parts Identification Page

Use Zone 18' Diameter



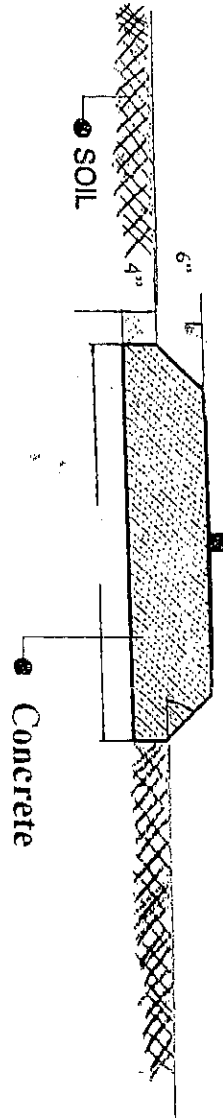
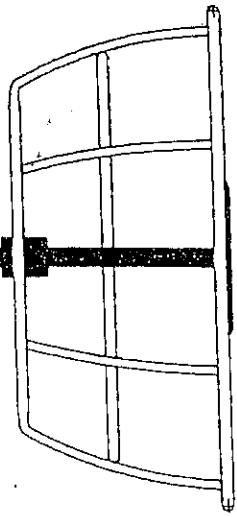
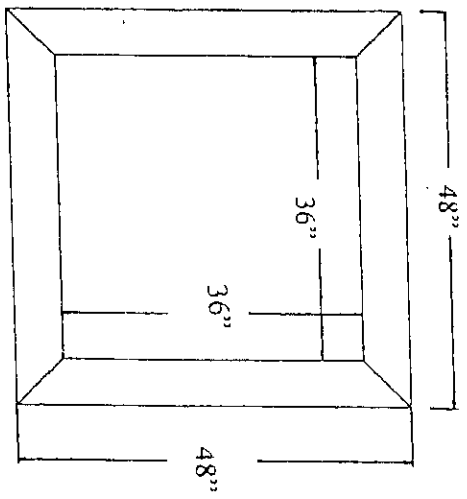
Hardware

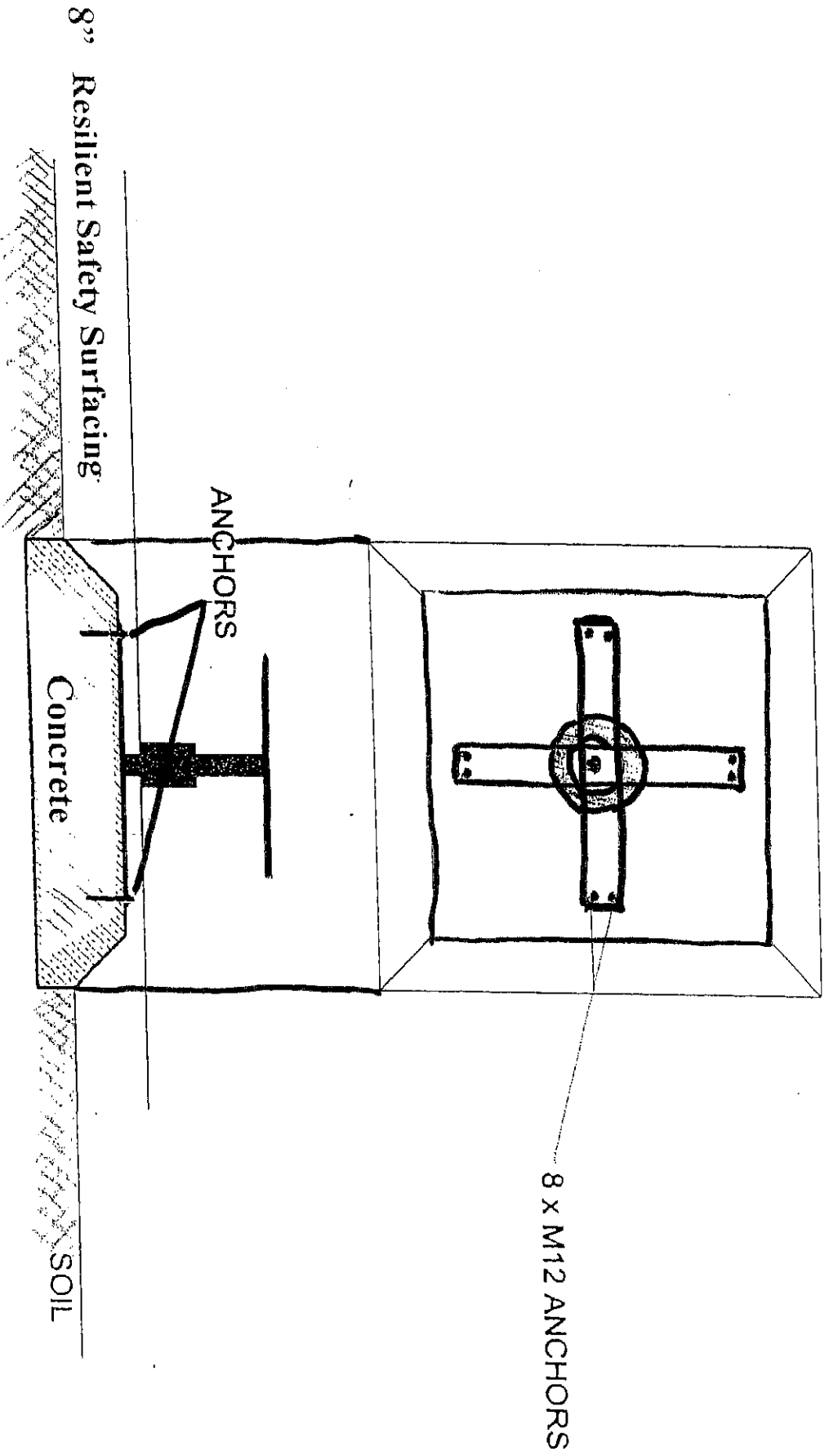
Item	Quantity	Application
M 10 x 30 Bolt	5	Seat
M10 x 1.5 x 40 BH Bolt	4	Body to Hub Assembly
5/16" Stud	2	Vertical Upright to Wheel
5/16" BH Nut	4	Vertical Upright to Wheel
Red Loctite Tube	1	Vertical Upright to Wheel
3/16" Hex Key	2	Vertical Upright to Wheel
M 10 Hex Nut	5	Seat
6MM Hex Key	1	Body to Hub Assembly
Concrete Anchor	8	Hub & Anchor Assembly



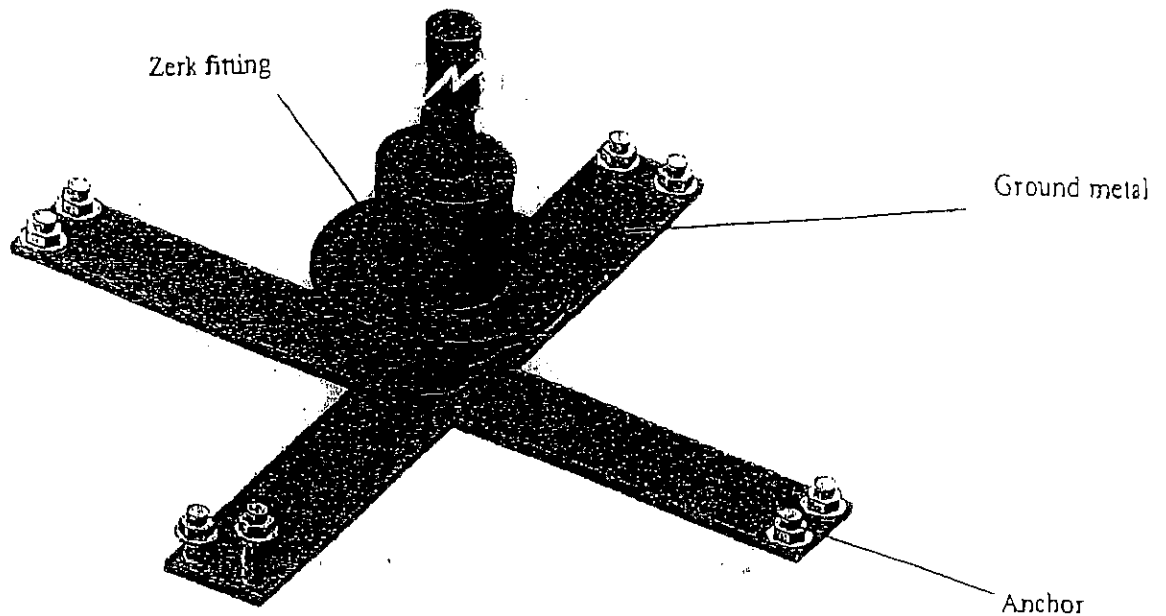
After assembly of the unit, please follow the **Maintenance Plan** included with the Instruction Packet.

Foundation Detail

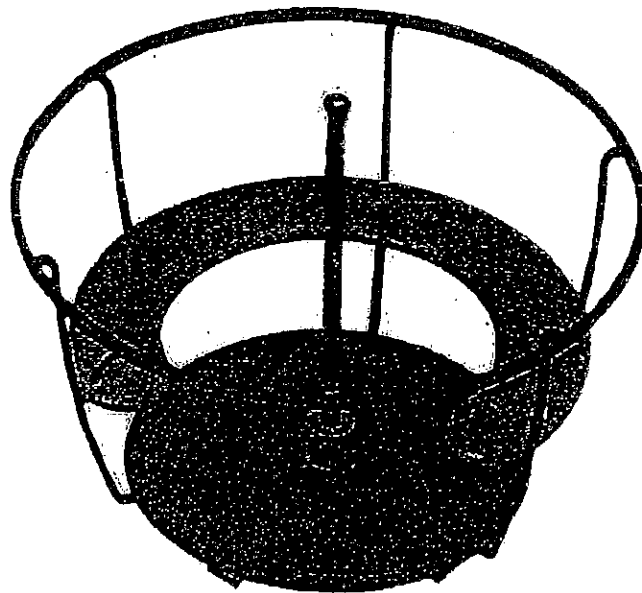




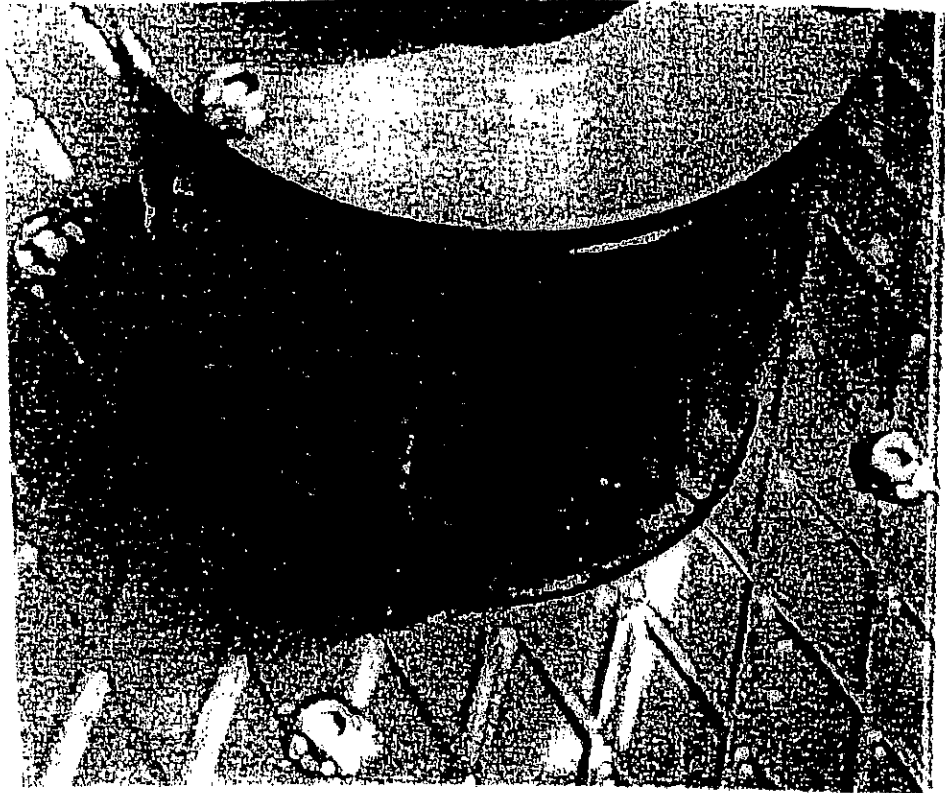
Allow at least 48 – 72 hours for concrete to harden before drilling and installing anchors.



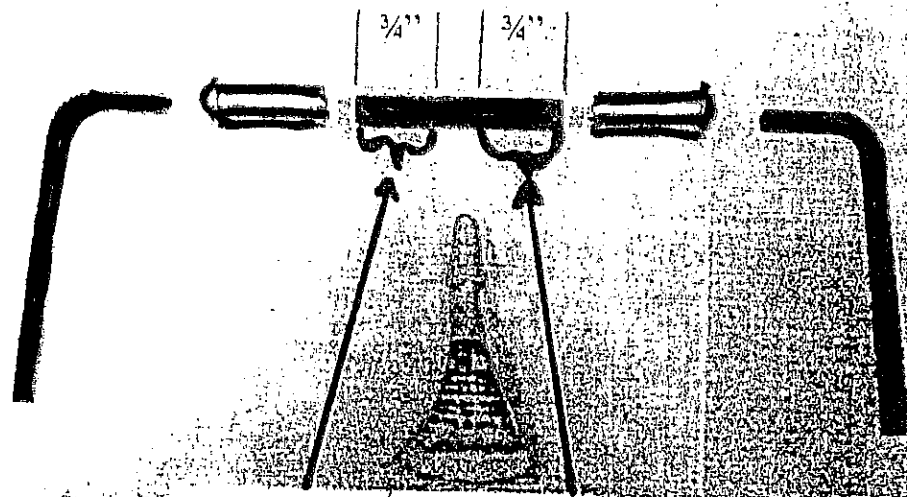
Position the Hub/Anchor Assembly in place and fasten to the concrete using the concrete anchors. This is an opportune time to grease the zerk fitting.



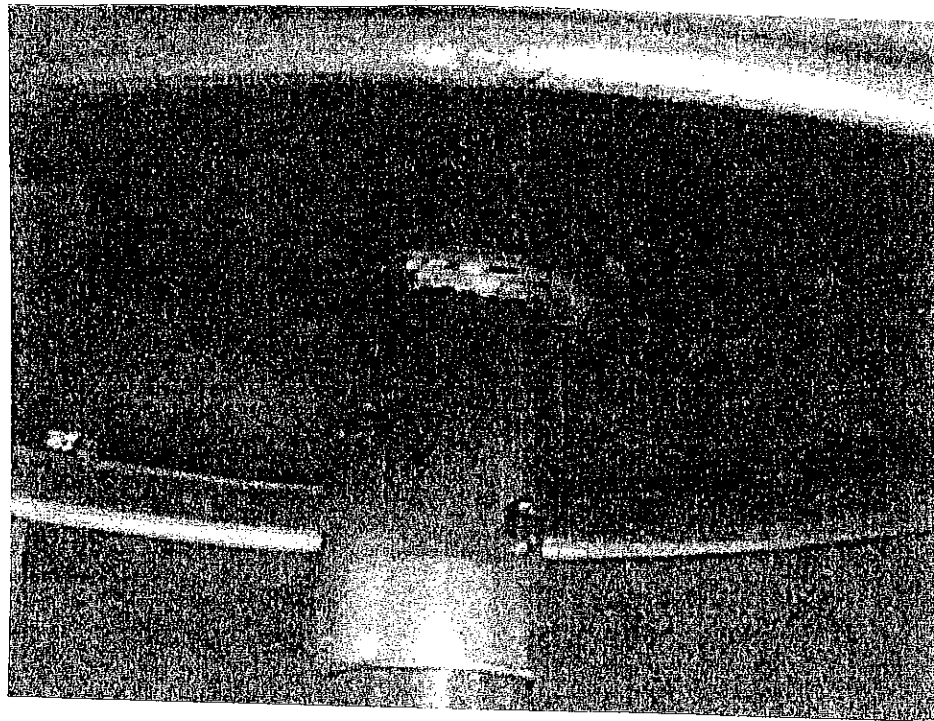
Lift the Body and carefully set in position over the Hub/Anchor Assembly.



Align the four bolt holes in the Body with the holes in the Hub/Anchor Assembly. (The Hub/Anchor Assembly has nuts welded in place). Place a Button Head Bolt through the Body into the Hub/Anchor Assembly and start a couple of the threads. After this bolt is in place proceed with the other three bolts. Some shifting of the Body may be necessary for all the holes to be in proper alignment. **Do not tighten any of the bolts until all four bolts have been started in their threads.** Use the 6mm Hex Key provided to firmly tighten the Button Head Bolts up against the Body.



Thoroughly coat threads with Red Loctite



Slide the Wheel over the Post on Hub/Anchor Upright Assembly. Align both sets of bolt holes. **Thoroughly coat the stud threads ($\frac{3}{4}$ " back on both ends) with Red Loctite.** Thread a Stud into a Button Head Nut, place inside one of the holes in the Wheel Assembly, and then install another Button Head Nut on the opposite side. Repeat for the other hole in the Vertical Upright. **Tighten the Button Head Nuts firmly on the Studs with the $\frac{3}{16}$ " Hex Keys provided.** (See Photos)

Maintenance Plan For The Tea Cup Merry Go Round

A daily visual inspection is required for this product. All maintenance tasks should be completed monthly or as required should the results of the daily inspection indicate a problem.

- 1) **Daily** - Visually inspect all parts for wear/tear and contact distributor to replace if necessary.
- 2) **Daily** -- Inspect all bolts to ensure they are tight, if loose, secure equipment until maintenance can be performed.
- 3) **Daily** – Inspect unit for stability. If the unit wobbles or makes noise tighten all bolts and grease unit. If the problem is still present, contact distributor and secure unit until repairs have been made.
- 4) **Monthly** – Tighten all bolts.
- 5) **Monthly** – Grease merry go round hub.
- 6) **Monthly** – Inspect for worn or damaged parts. If parts are required secure playground and contact distributor.

If you have any further questions please contact your distributor.

902-788 Tea Cup MGR Hardware

Part Number	Item	Quantity	Application
116-919	M 10 x 1.5 x 40 Button Head Bolt	4	Body
116-541	5/16" Threaded Stud	2	Wheel Assembly
216-512	5/16" BH Nut	4	Wheel Assembly
516-300	Red Loctite Tube	1	Wheel Assembly
416-350	3/16" Hex Key	2	Wheel Assembly
416-507	6MM Hex Key	1	Body
N/A	Concrete Anchor	8	Hub/Anchor Assembly

Hardware (Install Prior to Shipping)

116-920	M 8 x 1.25 x 25 Button Head Bolt	3	Hub Assembly
805-532	Warning Label	1	Vertical Upright
805-534	SportsPlay Label	1	Vertical Upright
N/A	M 10 x 30 Hex Bolts	5	Seat
N/A	M 10 Hex Nuts	5	Seat