

# TOILEVATOR® & TOILEVATOR® GRANDE

## INSTALLATION INSTRUCTIONS

PLEASE READ THIS ENTIRE MANUAL BEFORE INSTALLING THE TOILEVATOR®



U.S. Patent Numbers 5,303,430 and 5,432,957. Canadian Patent Number 2,123,939

### LIST OF COMPONENTS SUPPLIED:

- |                           |                                    |
|---------------------------|------------------------------------|
| • 1 - Spacer Base         | • 2 - Plastic Washers              |
| • 1 - Soil Pipe Extension | • 2 - Trim Caps                    |
| • 2 - Long Closet Bolts   | • 2 - Wax Seals                    |
| • 4 - Hexagon Nuts        | • 1 - Extended Flexible Water Hose |
| • 4 - Flat Washers        | • 1 - Installation Instructions    |

### PRODUCT INFORMATION:

- 500lbs (227kg) maximum weight capacity.
- Will fit toilets where the base is as close as 7" (18cm) to the wall.
- The TOILEVATOR® can also be painted to match your existing toilet, we suggest using a primer suitable for ABS plastic.

### IMPORTANT INSTALLATION NOTES:

- With all plumbing work in the home we recommend that you consult a licenced plumber for this installation.
- The floor connecting flange may need to be levelled with the floor before beginning the installation.



### STEP 1: Disconnect Water Line from Toilet and Empty Toilet of Water

- A. Remove the toilet tank lid and put in in a safe place, out of the way.
- B. Turn the toilet tank water supply valve to the closed position. This valve should be located on the wall behind the toilet.
- C. Flush twice to empty as much water from the toilet and tank as possible and to ensure that the water inlet valve has been properly closed.
- D. Remove any remaining water in the tank and toilet bowl.
- E. Disconnect the water hose from the toilet tank.

### STEP 2: Disassemble Toilet from Floor

- A. Remove the trim caps and nuts from the closet bolts securing the toilet to the floor.
- B. Place a suitable covering on the floor to protect it.
- C. Remove the toilet from its mount and place on the floor covering.
  - a. Tip: To make the job easier, you can remove the toilet tank first. Remove Fasteners at base of toilet tank and remove entire tank before removing toilet assembly off the closet flange.
- D. Remove any remaining old wax or foam seal form the closet flange and toilet underside.

*Note:* Be careful not to drop anything down the open soil pipe. It is a good idea to temporarily block the open pipe.

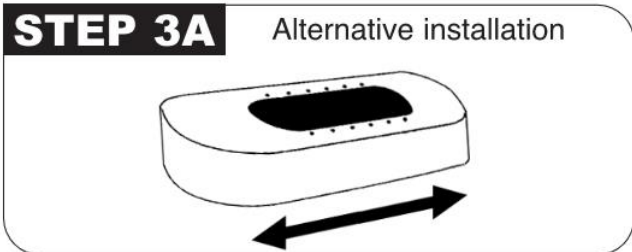


### STEP 3



### STEP 3A

Alternative installation



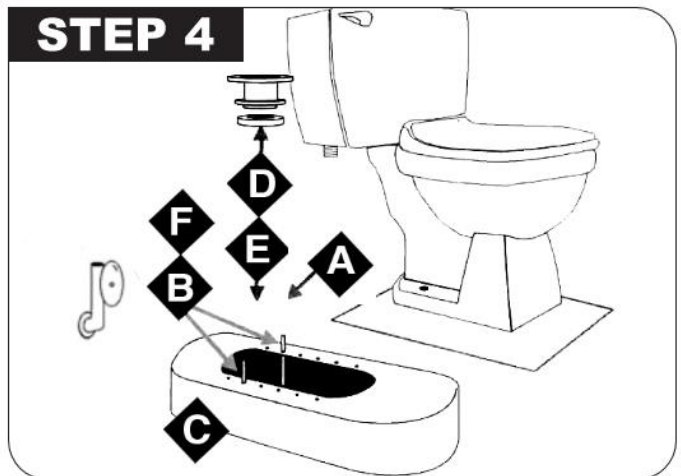
### STEP 3: Locate the Correct Spacer Base Adjustment Holes

- Place the base flat on the floor so that the lettering is showing. Note that there are 6 pairs of numbered holes and base ends are labelled A and B. The spacer base is reversible, either end can go to the front, which offers 12 installation positions.
- Find the adjustment position by placing the toilet on top of the spacer base. The closet bolt holes of the toilet should line up with the one of the 6 pairs of numbers.
- Choose a set of holes that allow the front edge of the toilet base to come up as close as possible to the spacer base without overhanging, while completely covering the spacer base top surface holes. The back of the Toilevator® does not need to be touching the wall.
- Record the number of correct spacer base holes and whether the A end or B end is closet to the wall. (example 3A – toward the wall)

### STEP 4: Install the Spacer Base and Soil Pipe Extension

- Remove the old closet bolts by sliding them out of the slots of the floor flange.
- Replace with the new longer closet bolts supplied with the Toilevator® Kit.
- Place the spacer base on the floor, over the closet flange, with the closet bolts through the correct spacer base holes (record tile number) and with the spacer base in the correct orientation.
- Take one wax seal and place over the bottom end of the soil pipe extension. The black plastic portion of the wax seal that protrudes should always face down into the soil pipe.
- Place the soil pipe extension with the wax seal into position in the closet flange by placing the soil pipe extension over the closet bolts. The word 'UP' on the soil pipe extension should be face up. Push down until the wax seal is seated firmly in the closet flange and the soil pipe extension is resting on the top of the spacer base.
- Place a round metal washer and hexagon nut over each closet bolt. Tighten to hold spacer in position. Do not over tighten. Check alignment.

### STEP 4





### STEP 5: Re-Install the Toilet onto the Spacer Base

- Take the other wax seal and put onto the underside of the toilet.
- Lower the toilet onto the spacer base and closet bolts. Push the toilet down firmly to set the wax seal into place. You can sit on the toilet carefully and use your weight to set the wax seals into place.
- Place a plastic washer, supplied with the kit, over each closet bolt.
- Next place metal washers over closet bolts and fasten hexagon nuts until tight.

**Note:** Be careful not to overtighten the fasteners as this may cause the porcelain of the toilet to break.

- Install the trim caps supplied over the nut assembly and snap into place over plastic washer.
- Re-assemble the toilet tank to the back of the toilet if it was removed.

### STEP 6: Reconnect Water Supply

- Reconnect the water supply hose to the toilet tank.
- Turn the water inlet valve to the open position. With valve open, toilet tank should now fill with water and the toilet should be ready to flush. Try flushing twice before use.
- Replace the toilet tank lid.
- It is recommended that a bead of silicone sealant be applied between:
  - The spacer base and the toilet
  - The spacer base and the floor

This will prevent the spacer base and the toilet from moving as the toilet is used.

